

# information BULLETIN

Volume 19 Number 2

March 1988



Western Association of Map Libraries

*"... to encourage high standards in every phase of organization  
and administration of map libraries..."*

The Western Association of Map Libraries is an independent association of persons & educational and business institutions. The Membership has defined, beginning in 1967, its Principal Region as follows: the Provinces of Alberta and British Columbia, and the States of Alaska, Arizona, California, Colorado, Hawaii, Idaho, Montana, Nevada, New Mexico, Oregon, Utah, Washington, Wyoming.

The Information Bulletin is published by the Western Association of Map Libraries, as its primary tool of communicating with its Membership and Subscribers, but opinions expressed herein do not necessarily reflect an official Association position.

Membership in WAML is open to any individual, institution, or business interested in furthering the Purpose of the Association, which is "to encourage high standards in every phase of the organization and administration of map libraries." Membership checks should be sent to the WAML Treasurer at the address shown below. Make checks payable to "WAML", or the "Western Association of Map Libraries".

WAML and its Information Bulletin operate on a Membership Year/Volume Year basis. All memberships and subscriptions begin July 1 and end on June 30 the following year.

**Membership Dues:** Individual Members residing in the Principal Region. \$20.00 per yr. Voting privileges, announcement of and attendance at meetings, service as an Officer, & automatic receipt of the Information Bulletin are among the benefits of membership.

**Associate Members** are those who reside outside the Principal Region. Associates may attend meetings, serve on committees, and will automatically receive the Information Bulletin and announcement of meetings. Dues are \$20.00 per yr.

**Institutional Members** are commercial firms or educational organizations. The institution or firm may designate one of its staff as its Representative. The Representative has all the rights as Individual Members, but may not hold office. The Institutional Member will receive one copy of each issue of the Information Bulletin and Occasional Paper issued during the year of membership. \$40.00 per yr.

**Lifetime Individual Membership** is open to individuals only, for a onetime payment of \$200. All privileges of membership, each issue of the Information Bulletin and a copy of each Occasional Paper will be sent as published, after Lifetime Membership begins.

**Subscriptions** to the Information Bulletin are \$25.00 per volume-year. It is issued three times each year: #1 in November, #2 in March, #3 in June. The Association is presently considering expanding to a fourth issue.

**MEMBERSHIPS AND SUBSCRIPTIONS ARE AVAILABLE ON A FISCAL YEAR/VOLUME YEAR BASIS ONLY.** Mid-year joiners/subscribers will receive back-issues for that year.

Back Issues of the Information Bulletin are available for \$10.00/vol or portion thereof.

---

### Editorial Staff

#### **Editor**

Larry Cruse  
University Library  
UC-San Diego C-075P  
La Jolla, CA 92093  
619 / 534-1248

#### **Production & Subscription Mgr.**

Stanley D. Stevens, (WAML  
University Library Treasurer}  
UC-Santa Cruz  
Santa Cruz, CA 95064  
408 / 429-2364

#### **Atlas & Book Reviews**

Peter L. Stark  
University Library  
University of Oregon  
Eugene, OR 97403  
503 / 686-3051

#### **Map & Atlas Cataloging Issues**

Mary L. Larsgaard  
Arthur Lakes Library  
Colorado School of Mines  
Golden, CO 80401  
303 / 273-3697

#### **New Mapping of**

Western North America  
Joe Crotts  
California State University-Chico  
Meriam Library-Maps  
Chico, CA 95929

#### **Agro-Cartography**

David Lundquist  
Map Section  
Shields Library  
University of California  
Davis, CA 95616

# WESTERN ASSOCIATION OF MAP LIBRARIES

## *Information Bulletin*

Volume 19 Number 2

March 1988

### *Table of Contents*

<b>WAML News</b>	Announcement: WAML Subcommittee on Geoscience Publications .....	63
	WAML Spring Meeting, Pasadena, April 21-23, 1987, Agenda .....	62
<b>Features</b>	California Important Farmland Mapping—Update, by <i>Robert Yoha</i> .....	77
	Color Microfiche for Large Topographic Map Sets, by <i>Bill Hunt</i> .....	87
	Index to the Folios of the Geologic Atlas of the United States, by <i>Paul Leverenz</i> .....	74
	Index to the Geologic Maps of Hawaii, by USGS Topographic Quadrangle Name, by <i>Michael Mark Noga</i> .....	64
<b>Reviews</b> Edited by <i>Peter Stark</i>	<i>Cartography and Site Analysis with Microcomputers: a programming guide for physical planning, urban design, and landscape architecture,</i> reviewed by <i>Karen G. Sommerlad</i> .....	117
	<i>Cartography in France, 1660-1848: science, engineering and statecraft,</i> reviewed by <i>Larry Cruse</i> .....	116
	<i>Facts on File Dictionary of Human Geography</i> , reviewed by <i>Sandra J. Lamprecht</i> .....	115
	<i>Foreign Gazetteers of the U.S. Board on Geographic Names, Microfiche Collection</i> , reviewed by <i>Peter L. Stark</i> .....	114
	<i>Map Guide to the U.S. Federal Censuses, 1790-1920</i> , reviewed by <i>Kip Sperry</i> .....	119
	<i>Reader's Digest Guide to Places of the World</i> , reviewed by <i>Harold M. Otness</i> .....	118
<b>Departments</b>	Agro-Cartography, by <i>David Lundquist</i> .....	80
	Announcements .....	63 & 95 & 99
	Conferences/Meetings .....	112
	Equipment .....	106
	Essay Contest .....	106
	Exhibits .....	108
	Fellowships & Grants .....	111
	Map Librarianship Job Vacancies .....	110
	MicroCartography, by <i>Larry Cruse</i> .....	87
	Milestones .....	95
	Names .....	100
	New Mapping of Western North America, edited by <i>Joe Crotts</i> .....	82
	New Publications of Interest .....	92
	Publications Received, compiled by <i>Peter L. Stark</i> .....	119
	Reports from Kindred Organizations: NEMO .....	96
	Self Preservation .....	102
	Softworld .....	101
	Sounding Board .....	107
	State Mapping Advisory Committees Report: Arizona .....	106
	The Last Page, by <i>Larry Cruse &amp; J. B. Post</i> .....	122
	Trading Post .....	97

© Copyright 1988 by The Western Association of Map Libraries

**WAML Spring 88**  
Preliminary Information  
**Thursday — Saturday, April 21—23, 1988**  
California Institute of Technology, Pasadena  
Host: Jim O'Donnell, Geology Library, 818/356-2199

Program will include:

**Harold Otness on Map Theft**

**Julia Gelfand on Education for Map Librarianship**

**Michael Noga on Use of Open-file Maps**

**Rodrigo Cardenas and Larry Cruse on bi-National Cooperation**

**J. C. Gilland on Microcomputer Applications in the Map Library**

**Alan Jutzi on the Huntington Library's map collections and preservation facilities.**

Tentative Schedule:

Thursday	AM:	Executive Board
	PM:	Sounding Board and Papers
		Map Room Open House and refreshments
		Dinner in Old Pasadena
Friday	AM:	Business meeting and papers
		Lunch at the Athenaeum
	PM:	Huntington Library presentation
		Dinner
Saturday:		Arboreta and Musea

Complete information will be mailed early in March, to Principal Region Members, Lifetime Members, and Institutional Members within the Principal Region. Others may request information if they are interested in attending.

Jim O'Donnell  
Geology Library 170-25  
CAL TECH  
PASADENA, CA 91125

---

## ANNOUNCEMENT

### To All WAML Members and IB Readers:

I am planning to conduct a user/use survey at the UCLA Map Library in the fall quarter of 1988. I am in the process of designing a questionnaire and would like to know if any map libraries have already conducted similar surveys. I would appreciate the opportunity to examine any instruments that have been used, and the chance to view any available data and subsequent analysis.

Any input as to viable questions that you feel need to be asked would be appreciated. Although the survey will deal with the UCLA Map Library, there is always the possibility that I will be able to make generalizations that others may find useful.

Please send your suggestions and comments to:

David Deckelbaum  
UCLA Map Library  
A253 Bunche Hall  
University of California  
Los Angeles, CA 90024

---

## ANNOUNCEMENT

### To All WAML Members and IB Readers:

In the November 1987 *Information Bulletin*, I announced the formation of the Subcommittee on Geoscience Publications. The Subcommittee met at the WAML Meeting in Reno last year, and we discussed a set of geologic map indexes of each state. We are interested in producing a set of indexes to the states in the WAML Principal Region first, and then add indexes to other states.

The Subcommittee agreed to several guidelines.

1. Each index will contain two parts. The first part will list geologic maps of the whole state or large sections of the state. The scales of these maps will be smaller than 1:125,000.

2. The second part of the index will be arranged alphabetically by 7.5' and 15' quadrangle names. The geologic maps in this section will have scales greater than or equal to 1:125,000.

3. The principal indexing unit is the 7.5' quadrangle name, unless no name has been assigned to a 7.5' quadrangle area. In this case, the indexing unit is the 15' quadrangle name. All 15' quadrangle names will be listed in the index, and cross-references will lead the user to the constituent 7.5' quadrangle names.

4. Several state geological surveys produce detailed geologic maps. Other organizations in the state might produce detailed geologic maps also. Indexers will add maps from these series to the indexes based on their knowledge of state geologic mapping. USGS mapping will be included in all indexes.

In this issue you will find the **Index to Geologic Maps of Hawaii, by USGS Quadrangle Name, 1883-1986**. I have prepared this index according to the preceding guidelines. There was only one 15' quadrangle in the index, and this has not been subdivided; so, I did not show how the cross-references will work.

The Subcommittee realizes how much work is required by these guidelines. We think that the indexes for some states will be prepared by more than one indexer. For example, one person might index USGS geologic mapping of a state. The other indexer might work on state geologic mapping.

The Subcommittee will be meeting at the next WAML meeting in Pasadena. If you have any comments on these guidelines please contact me or the other Subcommittee members before or at the meeting.

Members of the Subcommittee:

Joe Crotts	Cal State - Chico
Charlotte Derksen	Stanford
Jim O'Donnell	Cal Tech
Ed Jestes	UC - Davis
Michael Noga (Chair)	UCLA

On behalf of the Subcommittee:

Michael Noga  
UCLA - Geology/Geophysics Library  
4697 Geology  
Los Angeles, CA 900024-1567

Phone: (213) 825-6485

---

**Index to Geologic Maps of Hawaii,  
by USGS Topographic Quadrangle Name, 1883-1986**

compiled by  
**Michael Mark Noga**  
Geology/Geophysics Library  
University of California  
Los Angeles

This index covers geologic maps of Hawaii that were published in several U. S. Geological Survey series. Only maps from the L Series (Land Use and Land Cover Maps) have been excluded. The index also includes maps that were published in Bulletins of the Hawaii Division of Hydrography, because this series includes important detailed geologic maps of the state. Only maps that are physically separate from the text of bulletins or professional papers are included.

This index has two parts. The first part lists small scale geologic maps of Hawaii in alphabetical order by title. The second part indexes geologic maps that have scales of 1:125,000 or larger. This part is arranged in alphabetical order by USGS 7.5' topographic quadrangle names. One USGS 15' quadrangle is included also.

Each entry includes the following elements: the quadrangle name; a reference to the publication which contains a geologic map of part or all of the quadrangle; the scale of the geologic map; and the coverage of the geologic map. Geographic coverage is indicated, and the subject coverage is noted if the map is not a standard geologic map.

### Abbreviations

#### Indexed Publications

<b>B</b>	USGS Bulletin, 1883-
<b>GP</b>	USGS Geophysical Investigations Map, 1946-
<b>GQ</b>	USGS Geologic Quadrangle Map, 1949-
<b>HA</b>	USGS Hydrologic Investigations Atlases, 1954-
<b>HB</b>	Hawaii Dept. of Lands. Division of Hydrography. Bulletin, 1935-1960
<b>I</b>	USGS Miscellaneous Geologic Investigations Map, 1955-
<b>MF</b>	USGS Miscellaneous Field Studies Map, 1951-
<b>OF</b>	USGS Open-File Report (only 1974- included)
<b>P</b>	USGS Professional Paper, 1902-
<b>W</b>	USGS Water-Supply Paper, 1896-

#### Coverage Notations

<b>N</b>	North	<b>aeromag</b>	Aeromagnetic map
<b>NE</b>	Northeast	<b>offshore</b>	Map covers area offshore from the quadrangle
<b>NW</b>	Northwest		
<b>S</b>	South		
<b>SE</b>	Southeast		
<b>SW</b>	Southwest		

Small-Scale Geologic Maps of Hawaii**Aeromagnetic map of the Island of Hawaii**

GP-946  
1:250,000

**Composite magnetic anomaly map of the United States, Part B, Alaska and Hawaii**

GP-954-B  
1:2,500,000

**Equal-area base maps of the Hawaiian Islands**

OF-79-1325  
1:1,000,000

**Fresh-water springs of Hawaii from infrared images**

HA-218  
Island of Hawaii

**Geologic map of the Island of Hawaii**

P 214-D, pl. 12  
1:320,000

**Physiographic diagram of the Island of Hawaii**

OF-77-814

**Topography of the southern Hawaiian Islands**

OF-81-120  
Hawaii, Kahoolawe, Lanai, Maui, Molokai, Oahu

Large-Scale Geologic Maps of Hawaii

<u>Quadrangle</u>	<u>Publication</u>	<u>Scale</u>	<u>Coverage</u>	<u>Quadrangle</u>	<u>Publication</u>	<u>Scale</u>	<u>Coverage</u>
Ahumoa	HB 9, pl. 1	125K	Complete	Anahola	HB 13, pl. 1	62K	Complete
Akaka Falls	HB 9, pl. 1	125K	Complete	Anahola	P 656, pl. 1	24K	Kilauea area
Akaka Falls	MF-1499	24K	SE volcanic ash	Anahola	P 656, pl. 2	24K	S of Anahola Stream
Alika Cone	HB 9, pl. 1	125K	Complete	Anahola	P 656, pl. 11	100K	Complete, construction materials
Alika Cone	I-1323	100K	Complete	Ewa	HA-267	62K	Complete, water use
Alika Cone	I-1611	100K	E of 155° 43', earthquakes	Ewa	HA-358	62K	Complete, hydrogeology
Alika Cone	MF-1845-A	100K	Complete, aeromag	Ewa	HB 2, pl. 2	62K	Complete
Alika Cone	MF-1845-B	100K	Complete, resistivity	Haena	HB 13, pl. 1	62K	Complete
Anaehoomalu	HB 9, pl. 1	125K	Complete	Haena	P 656, pl. 5	24K	Alakai Swamp, clay

<u>Quadrangle</u>	<u>Publication</u>	<u>Scale</u>	<u>Coverage</u>	<u>Quadrangle</u>	<u>Publication</u>	<u>Scale</u>	<u>Coverage</u>
Haena	P 656, pl. 11	100K	Complete, construction materials	Honaunau	MF-986	83K	N of 19° 23' 30" and offshore
Haiku	HB 7, pl. 1	62K	Complete	Honokaa	HB 9, pl. 1	125K	Complete
Haiku	I-1442	100K	Complete, volcanic hazard	Honokane	HB 9, pl. 1	125K	Complete
Haiku	P 656, pl. 7	24K	Complete, bauxite	Honolua	HB 7, pl. 1	62K	Complete
Halawa	HB 11, pl. 1	62K	Complete	Honolua	I-1442	100K	Complete, volcanic hazard
Haleiwa	HA-358	62K	Complete, hydrogeology	Honolua	P 656, pl. 6	24K	E of Napili Bay
Haleiwa	HB 2, pl. 2	62K	Complete	Honolulu	HA-267	62K	Pearl Harbor area, water use
Hana	HB 7, pl. 1	62K	Complete	Honolulu	HB 2, pl. 2	62K	Complete
Hana	I-1442	100K	Complete, volcanic hazard	Hualalai	HB 9, pl. 1	125K	Complete
Hanalei	HB 13, pl. 1	62K	Complete	Ilio Point	HB 11, pl. 1	62K	Complete
Hanalei	P 656, pl. 1	24K	Princeville Ranch area	Ka Lae	HB 9, pl. 1	125K	Complete
Hanalei	P 656, pl. 11	100K	Complete, construction materials	Ka Lae	I-1323	100K	Complete
Hanapepe	HB 13, pl. 1	62K	Complete	Ka Lae	I-1611	100K	Complete, earthquakes
Hanapepe	P 656, pl. 11	100K	Complete, construction materials	Ka Lae	MF-1845-A	100K	Complete, aeromag
Hauula	HA-473	12K	NW 1/4, floods	Ka Lae	W 616, pl. 1	62K	Complete
Hauula	HB 2, pl. 2	62K	Complete	Kaena	HA-358	62K	Complete, hydrogeology
Hawi	HB 9, pl. 1	125K	Complete	Kaena	HB 2, pl. 2	62K	Complete
Hilo	HB 9, pl. 1	125K	Complete	Kahakuloa	HB 7, pl. 1	62K	Complete
Hilo	MF-1499	24K	NW, volcanic ash	Kahakuloa	I-1442	100K	Complete, volcanic hazard
Hilo	OF-80-796	50K	extreme SE	Kahakuloa	P 656, pl. 6	24K	Complete
Hilo	OF-81-791	24K	NW	Kahana	HA-473	12K	NE 1/4, floods
Hilo	OF-82-655	24K	NW	Kahana	HA-531	12K	Waiahole- Waikane area, floods
Honaunau	HB 9, pl. 1	125K	Complete	Kahana	HB 2, pl. 2	62K	Complete
Honaunau	I-1323	100K	Complete	Kahuku	HB 2, pl. 2	62K	Complete
				Kahuku Ranch	HB 9, pl. 1	125K	Complete



<u>Quadrangle</u>	<u>Publication</u>	<u>Scale</u>	<u>Coverage</u>	<u>Quadrangle</u>	<u>Publication</u>	<u>Scale</u>	<u>Coverage</u>
Kahuku Ranch	I-1323	100K	Complete	Kaneohe	HA-267	62K	Pearl Harbor area, water use
Kahuku Ranch	I-1611	100K	E of 155°43', earthquakes	Kaneohe	HA-531	12K	Waiahole-Waikane area, floods
Kahuku Ranch	MF-1845-A	100K	Complete, aeromag	Kaneohe	HB 2, pl. 2	62K	Complete
Kahuku Ranch	MF-1845-B	100K	Complete, resistivity	Kapaa	HB 13, pl. 1	62K	Complete
Kahuku Ranch	W 616, pl. 1	62K	Complete	Kapaa	P 656, pl. 2	24K	N of Kapaa Stream
Kailua	HB 9, pl. 1	125K	Complete	Kapaa	P 656, pl. 3	24K	Complete
Kalalua	HB 9, pl. 1	125K	Complete	Kapaa	P 656, pl. 11	100K	Complete, construction materials
Kalalua	I-1611	100K	Complete, earthquakes	Kapoho	HB 9, pl. 1	125K	Complete
Kalalua	MF-1845-A	100K	Complete, aeromag	Kapoho	I-677	62K	Complete and offshore
Kalalua	MF-1845-B	100K	Complete, resistivity	Kapoho	I-1611	100K	Complete, earthquakes
Kalalua	OF-80-796	50K	Complete	Kapoho	MF-1845-A	100K	Complete, aeromag
Kalalua	P 614-C, pl. 1	24K	SW to NE	Kapoho	MF-1845-B	100K	Complete, resistivity
Kalapana	HB 9, pl. 1	125K	Complete	Kapoho	OF-80-796	50K	Complete
Kalapana	I-1611	100K	Complete, earthquakes	Kapoho	OF-81-947	24K	Complete
Kalapana	MF-1845-A	100K	Complete, aeromag	Kau Desert	GQ-827	24K	Complete
Kalapana	MF-1845-B	100K	Complete, resistivity	Kau Desert	HB 9, pl. 1	125K	Complete
Kalapana	OF-80-796	50K	Complete	Kau Desert	I-456	62K	Complete, structure
Kalapana	OF-82-463	—	S, landslide	Kau Desert	I-1611	100K	Complete, earthquakes
Kalapana	P 614-C, pl. 1	24K	extreme NW	Kau Desert	MF-1368	24K	NE 1/4, structure
Kalapana	W 616, pl. 1	62K	W central	Kau Desert	MF-1845-A	100K	Complete, aeromag
Kamalo	HB 11, pl. 1	62K	Complete	Kau Desert	MF-1845-B	100K	Complete, resistivity
Kamuela	HB 9, pl. 1	125K	Complete	Kau Desert	OF-80-796	50K	Complete
Kaneohe	HA-239	12K	Kahaluu area, floods				

Quadrangle	Publication	Scale	Coverage	Quadrangle	Publication	Scale	Coverage
Kau Desert	OF-82-463	—	SE, landslide	Kealakekua	MF-986	83K	S of 19°32', and offshore
Kau Desert	P 856, pl. 1	7K	Koae Fault	Keamuku	HB 9, pl. 1	125K	Complete
Kau Desert	W 616, pl. 1	62K	Complete	Keanae	HB 7, pl. 1	62K	Complete
Kaululua Point	HB 9, pl. 1	125K	Complete	Keanae	I-1442	100K	Complete, volcanic hazard
Kaululua Point	I-1323	100K	Complete	Keanae	P 656, pl. 7	24K	W of Honomanu Stream, bauxite
Kaunakakai	HB 11, pl. 1	62K	Complete	Keanakolu	HB 9, pl. 1	125K	Complete
Kaunene	HB 9, pl. 1	125K	Complete	Keawanui Bay	HB 9, pl. 1	125K	Complete
Kaunene	I-1323	100K	S 1/4	Kekaha	HB 13, pl. 1	62K	Complete
Kaunene	MF-1845-A	100K	SE corner, aeromag	Kekaha	P 656, pl. 11	100K	Complete, construction materials
Kaunene	MF-1845-B	100K	SE corner, resistivity	Kiholo	HB 9, pl. 1	125K	Complete
Kaupo	HB 7, pl. 1	62K	Complete	Kiholo	MF-1355	1K	Kaupulehu flow
Kaupo	I-1088	24K	extreme NW	Kilauea Crater	GQ-667	24K	Complete
Kaupo	I-1442	100K	Complete, volcanic hazard	Kilauea Crater	HB 9, pl. 1	125K	Complete
Kawaihae	HB 9, pl. 1	125K	Complete	Kilauea Crater	I-456	62K	S of 19°26', structure
Keaau Ranch	HB 9, pl. 1	125K	Complete	Kilauea Crater	I-1611	100K	Complete, earthquakes
Keaau Ranch	OF-80-796	50K	extreme SW	Kilauea Crater	MF-1368	24K	SE 1/4, structure
Keahole Point	HB 9, pl. 1	125K	Complete	Kilauea Crater	MF-1845-A	100K	Complete, aeromag
Keahole Point	OF-85-586	24K	Complete	Kilauea Crater	MF-1845-B	100K	Complete, resistivity
Keaiwa Reservoir	HB 9, pl. 1	125K	Complete	Kilauea Crater	OF-80-796	50K	S 3/4
Keaiwa Reservoir	I-1323	100K	Complete	Kilauea Crater	W 616, pl. 1	62K	Complete
Keaiwa Reservoir	I-1611	100K	Complete, earthquakes	Kilohana	HB 7, pl. 1	62K	Complete
Keaiwa Reservoir	MF-1845-A	100K	Complete, aeromag	Kilohana	I-1088	24K	SE
Keaiwa Reservoir	MF-1845-B	100K	Complete, resistivity	Kilohana	I-1442	100K	Complete, volcanic hazard
Keaiwa Reservoir	W 616, pl. 1	62K	E 1/2				
Kealakekua	HB 9, pl. 1	125K	Complete				
Kealakekua	I-1323	100K	S 1/4				

<u>Quadrangle</u>	<u>Publication</u>	<u>Scale</u>	<u>Coverage</u>	<u>Quadrangle</u>	<u>Publication</u>	<u>Scale</u>	<u>Coverage</u>
Kipahulu	HB 7, pl. 1	62K	Complete				
Kipahulu	I-1442	100K	Complete, volcanic hazard	Kulani	I-1611	100K	S of 19°35', earthquakes
Kipuka Pakekake	GQ-957	24K	Complete	Kulani	MF-1845-A	100K	Complete, aeromag
Kipuka Pakekake	HB 9, pl. 1	125K	Complete	Kulani	MF-1845-B	100K	Complete, resistivity
Kipuka Pakekake	I-456	62K	SE 1/4, structure	Kulani	OF-84-12	24K	Complete
Kipuka Pakekake	I-1611	100K	Complete, earthquakes	Lahaina	HB 7, pl. 1	62K	Complete
Kipuka Pakekake	MF-1845-A	100K	Complete, aeromag	Lahaina	I-1442	100K	Complete, volcanic hazard
Kipuka Pakekake	MF-1845-B	100K	Complete, resistivity	Lihue	HB 13, pl. 1	62K	Complete
Kipuka Pakekake	OF-80-796	50K	extreme SE	Lihue	P 656, pl. 3	24K	NW 1/4
Kipuka Pakekake	W 616, pl. 1	62K	Complete	Lihue	P 656, pl. 11	100K	Complete, construction materials
Koko Head	HA-314	12K	Waimanalo area, floods	Lualailua Hills	HB 7, pl. 1	62K	Complete
Koko Head	HB 2, pl. 2	62K	Complete	Lualailua Hills	I-1088	24K	extreme NE
Kokoolau	HB 9, pl. 1	125K	Complete	Lualailua Hills	I-1442	100K	Complete, volcanic hazard
Kokoolau	I-1611	100K	S of 19°35', earthquakes	Maalaea	HB 7, pl. 1	62K	Complete
Kokoolau	MF-1845-A	100K	SE 3/4, aeromag	Maalaea	I-1442	100K	Complete, volcanic hazard
Kokoolau	MF-1845-B	100K	SE 3/4, resistivity	Mahukona	HB 9, pl. 1	125K	Complete
Kokoolau	W 616, pl. 3	50K	Mokuaweoweo Crater	Makaha Point	HB 13, pl. 1	62K	Complete
Koloa	HB 13, pl. 1	62K	Complete	Makaha Point	P 656, pl. 11	100K	Complete, construction materials
Koloa	P 656, pl. 3	24K	NE 1/4	Makahalau	HB 9, pl. 1	125K	Complete
Koloa	P 656, pl. 4	24K	Kanaele Swamp	Makalawena	HB 9, pl. 1	125K	Complete
Koloa	P 656, pl. 11	100K	Complete, construction materials	Makalawena	OF-85-595	24K	Complete
Kukaiau	HB 9, pl. 1	62K	Complete	Makaopuhi Crater	HB 9, pl. 1	125K	Complete
Kukuihaele	HB 9, pl. 1	125K	Complete	Makaopuhi Crater	I-456	62K	Complete and offshore, structure
Kulani	HB 9, pl. 1	125K	Complete	Makaopuhi Crater	I-1611	100K	Complete, earthquakes

<u>Quadrangle</u>	<u>Publication</u>	<u>Scale</u>	<u>Coverage</u>	<u>Quadrangle</u>	<u>Publication</u>	<u>Scale</u>	<u>Coverage</u>
Makaopuhi Crater	MF-811	24K	Complete, volcanic rocks	Molokai Airport	HB 11, pl. 1	62K	Complete
Makaopuhi Crater	MF-1368	24K	NW 1/4, structure	Mountain View	HB 9, pl. 1	125K	Complete
Makaopuhi Crater	MF-1845-A	100K	Complete, aeromag	Mountain View	I-1611	100K	S of 19° 35', earthquakes
Makaopuhi Crater	MF-1845-B	100K	Complete, resistivity	Mountain View	MF-1845-A	100K	Complete, aeromag
Makaopuhi Crater	OF-80-796	50K	Complete	Mountain View	MF-1845-B	100K	Complete, resistivity
Makaopuhi Crater	OF-82-463	—	S, landslide	Mountain View	OF-80-796	50K	SE 3/4
Makaopuhi Crater	P 614-C, pl. 1	24K	extreme NE	Naalehu	HB 9, pl. 1	125K	Complete
Makaopuhi Crater	W-616, pl. 1	62K	E central and Kau District	Naalehu	I-1323	100K	Complete
Makena	HB 7, pl. 1	62K	Complete	Naalehu	I-1611	100K	Complete, earthquakes
Makena	I-1442	100K	Complete, volcanic hazard	Naalehu	MF-1845-A	100K	Complete, aeromag
Manuka Bay	HB 9, pl. 1	125K	Complete	Naalehu	MF-1845-B	100K	Complete, resistivity
Manuka Bay	I-1323	100K	Complete	Naalehu	W 616, pl. 1	62K	Complete
Mauna Kea	HB 9, pl. 1	125K	Complete	Nahiku	HB 7, pl. 1	62K	Complete
Mauna Loa	GQ-897	24K	Complete	Nahiku	I-1088	24K	SW
Mauna Loa	HB 9, pl. 1	125K	Complete	Nahiku	I-1442	100K	Complete, volcanic hazard
Mauna Loa	I-1323	100K	SW 1/4	Naliikakani Point	HB 9, pl. 1	125K	Complete
Mauna Loa	I-1611	100K	Complete, earthquakes	Naliikakani Point	I-456	62K	Complete and offshore, structure
Mauna Loa	MF-1845-A	100K	Complete, aeromag	Naliikakani Point	I-1611	100K	Complete, earthquakes
Mauna Loa	MF-1845-B	100K	Complete, resistivity	Naliikakani Point	MF-1845-A	100K	Complete, aeromag
Mauna Loa	W-616, pl. 1	62K	extreme SE	Naliikakani Point	MF-1845-B	100K	Complete, resistivity
Mauna Loa	W 616, pl. 3	50K	Mokuaweoweo Crater	Naliikakani Point	OF-80-796	50K	Complete
Milolii	HB 9, pl. 1	125K	Complete	Naliikakani Point	OF-82-463	—	Complete, landslide
Milolii	I-1323	100K	Complete				
Mokapu	HB 2, pl. 2	62K	Complete				

Quadrangle	Publication	Scale	Coverage	Quadrangle	Publication	Scale	Coverage
Naliikakani Point	W 616, pl. 1	62K	Complete	Pahoa South	OF-80-796	50K	Complete
Naohueleelua	HB 9, pl. 1	125K	Complete	Pahoa South	OF-85-715	24K	Complete
Niihau 15'	HB 12, pl. 1	62K	Complete	Pahoa South	P 614-C	24K	extreme W
Nohonaohae	HB 9, pl. 1	125K	Complete	Paia	HB 7, pl. 1	62K	Complete
Olowalu	HB 7, pl. 1	62K	Complete	Paia	I-1442	100K	Complete, volcanic hazard
Olowalu	I-1442	100K	Complete, volcanic hazard	Papa	HB 9, pl. 1	125K	Complete
Pahala	HB 9, pl. 1	125K	Complete	Papa	I-1323	100K	Complete
Pahala	I-456	62K	E of 155° 24' 30", structure	Papa	MF-1845-A	100K	E of 155° 50', aeromag
Pahala	I-1323	100K	W 1/2	Papa	MF-1845-B	100K	E of 155° 50', resistivity
Pahala	I-1611	100K	Complete, earthquakes	Papaaloa	HB 9, pl. 1	125K	Complete
Pahala	MF-1845-A	100K	Complete, aeromag	Papaikou	HB 9, pl. 1	125K	Complete
Pahala	MF-1845-B	100K	Complete, resistivity	Papaikou	MF-1499	24K	SW, volcanic ash
Pahala	OF-80-796	50K	Complete	Piihonua	HB 9, pl. 1	125K	Complete
Pahala	W 616, pl. 1	62K	Complete	Piihonua	MF-1499	24K	NE, volcanic ash
Pahoa North	HB 9, pl. 1	125K	Complete	Piihonua	OF-81-791	24K	NE
Pahoa North	I-1611	100K	S of 19° 35', earthquakes	Piihonua	OF-82-655	24K	NE
Pahoa North	MF-1845-A	100K	Complete, aeromag	Pohue Bay	HB 9, pl. 1	125K	Complete
Pahoa North	MF-1845-B	100K	Complete, resistivity	Pohue Bay	I-1323	100K	Complete
Pahoa North	OF-80-796	50K	Complete	Pohue Bay	MF-1845-A	100K	E of 155° 50', aeromag
Pahoa South	HB 9, pl. 1	125K	Complete	Pohue Bay	MF-1845-B	100K	E of 155° 50', resistivity
Pahoa South	I-1611	100K	Complete, earthquakes	Punaluu	HB 9, pl. 1	125K	Complete
Pahoa South	MF-1845-A	100K	Complete, aeromag	Punaluu	I-1323	100K	Complete
Pahoa South	MF-1845-B	100K	Complete, resistivity	Punaluu	I-1611	100K	Complete, earthquakes
				Punaluu	MF-1845-A	100K	Complete, aeromag

<u>Quadrangle</u>	<u>Publication</u>	<u>Scale</u>	<u>Coverage</u>	<u>Quadrangle</u>	<u>Publication</u>	<u>Scale</u>	<u>Coverage</u>
Punaluu	MF-1845-B	100K	Complete, resistivity	Puu O Keokeo	MF-1845-A	100K	Complete, aeromag
Punaluu	W 616, pl. 1	62K	Complete	Puu O Keokeo	MF-1845-B	100K	Complete, resistivity
Puu Akala	HB 9, pl. 1	125K	Complete	Puu O Keokeo	W 616, pl. 1	62K	Complete
Puu Anahulu	HB 9, pl. 1	125K	Complete	Puu O Uo	HB 9, pl. 1	125K	Complete
Puu Hinai	HB 9, pl. 1	125K	Complete	Puu O Uo	I-1323	100K	S 1/4
Puu Hou	HB 9, pl. 1	125K	Complete	Puu O Uo	I-1611	100K	S 1/4, earthquakes
Puu Hou	I-1323	100K	Complete	Puu O Uo	MF-1845-A	100K	SE corner, aeromag
Puu Hou	MF-1845-A	100K	Complete, aeromag	Puu O Uo	MF-1845-B	100K	SE corner, resistivity
Puu Hou	W 616, pl. 1	62K	Complete	Puu Oo	HB 9, pl. 1	125K	Complete
Puu Koli	HB 9, pl. 1	125K	Complete	Puu Oo	MF-1845-A	100K	S 1/2, aeromag
Puu Koli	MF-1845-A	100K	SE corner, aeromag	Puu Oo	MF-1845-B	100K	S 1/2, resistivity
Puu Koli	MF-1845-B	100K	SE corner, resistivity	Puu Pohakuloa	HB 9, pl. 1	125K	Complete
Puu Lehua	HB 9, pl. 1	125K	Complete	Puu Pohakuloa	I-1323	100K	Complete
Puu Lehua	I-1323	100K	S 1/4	Puu Pohakuloa	MF-1845-A	100K	E of 155° 50', aeromag
Puu Makaala	HB 9, pl. 1	125K	Complete	Puu Pohakuloa	MF-1845-B	100K	E of 155° 50', resistivity
Puu Makaala	I-1611	100K	S of 19° 35', earthquakes	Puu Ulaula	HB 9, pl. 1	125K	Complete
Puu Makaala	MF-1845-A	100K	S 1/2, aeromag	Puu Ulaula	I-1611	100K	S of 19° 35', earthquakes
Puu Makaala	MF-1845-B	100K	S 1/2, resistivity	Puu Ulaula	MF-1845-A	100K	Complete, aeromag
Puu Makaala	OF-80-796	50K	extreme SE	Puu Ulaula	MF-1845-B	100K	Complete, resistivity
Puu O Kali	HB 7, pl. 1	62K	Complete	Puuloa	HA-267	62K	Complete, water use
Puu O Kali	I-1442	100K	Complete, volcanic hazard	Puuloa	HB 2, pl. 2	62K	Complete
Puu O Keokeo	HB 9, pl. 1	125K	Complete	Schofield Barracks	HA-267	62K	Pearl Harbor area, water use
Puu O Keokeo	I-1323	100K	Complete				
Puu O Keokeo	I-1611	100K	E of 155° 43', earthquakes				

<u>Quadrangle</u>	<u>Publication</u>	<u>Scale</u>	<u>Coverage</u>	<u>Quadrangle</u>	<u>Publication</u>	<u>Scale</u>	<u>Coverage</u>
Schofield Barracks	HA-358	62K	Complete, hydrogeology	Volcano	W 616, pl. 1	62K	Kau District
Schofield Barracks	HB 2, pl. 2	62K	Complete	Waialeale	HB 13, pl. 1	62K	Complete
Sulphur Cone	HB 9, pl. 1	125K	Complete	Waialeale	P 656, pl. 3	24K	E 1/2
Sulphur Cone	I-1323	100K	Complete	Waialeale	P 656, pl. 11	100K	Complete, construction materials
Sulphur Cone	I-1611	100K	E of 155° 43', earthquakes	Waianae	HA-358	62K	Complete, hydrogeology
Sulphur Cone	MF-1845-A	100K	SE 3/4, aeromag	Wailuku	HB 7, pl. 1	62K	Complete
Sulphur Cone	MF-1845-B	100K	SE 3/4, resistivity	Wailuku	I-1442	100K	Complete, volcanic hazard
Sulphur Cone	W 616, pl. 3	50K	Mokuaweoweo Crater	Wailuku	P 656, pl. 6	24K	NW
Umikoa	HB 9, pl. 1	125K	Complete	Waimea	HB 2, pl. 2	62K	Complete
Upper Piihonua	HB 9, pl. 1	125K	Complete	Waimea Canyon	HB 13, pl. 1	62K	Complete
Upper Piihonua	MF-1845-A	100K	S 3/4, aeromag	Waimea Canyon	P 656, pl. 11	100K	Complete, construction materials
Upper Piihonua	MF-1845-B	100K	S 3/4, resistivity	Waianae	HB 2, pl. 2	62K	Complete
Volcano	HB 9, pl. 1	125K	Complete	Waipahu	HA-267	62K	Pearl Harbor area, water use
Volcano	I-456	62K	S of 19° 26', structure	Waipahu	HB 2, pl. 2	62K	Complete
Volcano	I-1611	100K	Complete, earthquakes	Wood Valley	HB 9, pl. 1	125K	Complete
Volcano	MF-811	24K	S 1/4, volcanic rocks	Wood Valley	I-456	62K	E of 155° 24' 30", structure
Volcano	MF-1368	24K	SW 1/4, structure	Wood Valley	I-1611	100K	Complete, earthquakes
Volcano	MF-1845-A	100K	Complete, aeromag	Wood Valley	MF-1845-A	100K	Complete, aeromag
Volcano	MF-1845-B	100K	Complete, resistivity	Wood Valley	MF-1845-B	100K	Complete, resistivity
Volcano	OF-80-796	50K	all except extreme NW	Wood Valley	OF-80-796	50K	SE 1/2
Volcano	P 614-C, pl. 1	24K	extreme SE	Wood Valley	W 616, pl. 1	62K	Complete

Hawaii

## Index to the Folios of the Geologic Atlas of the United States

by

**Paul Leverenz**

Scripps Institution of Oceanography  
University of California-San Diego  
La Jolla, California

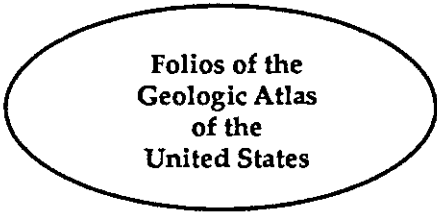
<p>Geological Survey (United States). <b>Geologic atlas of the United States.</b> Washington, [Geological Survey] 1894 - 1945. 227 v. illus., col. maps (part fold.) diagrs. 55 cm.</p> <p>Cover title. Scale of most maps 1:62,500 or 1:125,000. Superseded in 1949 by the Survey's Geologic quadrangle maps of the United States. Includes bibliographies.</p> <p>Geology — United States — Maps.</p> <p>G1201 .C5 U5</p>	<table border="1"> <thead> <tr> <th style="text-align: left;">State</th> <th style="text-align: left;">Name of Folio</th> <th style="text-align: left;">Folio no.</th> </tr> </thead> <tbody> <tr><td>CA</td><td>Jackson</td><td>11</td></tr> <tr><td>CA</td><td>Lassen Peak</td><td>15</td></tr> <tr><td>CA</td><td>Marysville</td><td>17</td></tr> <tr><td>CA</td><td>Mother Lode</td><td></td></tr> <tr><td></td><td>District</td><td>63</td></tr> <tr><td>CA</td><td>Nevada City</td><td></td></tr> <tr><td></td><td>Special</td><td>29</td></tr> <tr><td>CA</td><td>Placerville</td><td>3</td></tr> <tr><td>CA</td><td>Pyramid Peak</td><td>31</td></tr> <tr><td>CA</td><td>Redding</td><td>138</td></tr> <tr><td>CA</td><td>Sacramento</td><td>5</td></tr> <tr><td>CA</td><td>San Francisco</td><td>193</td></tr> <tr><td>CA</td><td>San Luis</td><td>101</td></tr> <tr><td>CA</td><td>Santa Cruz</td><td>163</td></tr> <tr><td>CA</td><td>Smartsville</td><td>18</td></tr> <tr><td>CA</td><td>Sonora</td><td>41</td></tr> <tr><td>CA</td><td>Truckee</td><td>39</td></tr> <tr><td>CO</td><td>Anthracite -</td><td></td></tr> <tr><td></td><td>Crested Butte</td><td>9</td></tr> <tr><td>CO</td><td>Apishapa</td><td>186</td></tr> <tr><td>CO</td><td>Castle Rock</td><td>198</td></tr> <tr><td>CO</td><td>Colorado</td><td></td></tr> <tr><td></td><td>Springs</td><td>203</td></tr> <tr><td>CO</td><td>Elmoro</td><td>58</td></tr> <tr><td>CO</td><td>Engineer</td><td></td></tr> <tr><td></td><td>Mountain</td><td>171</td></tr> <tr><td>CO</td><td>La Plata</td><td>60</td></tr> <tr><td>CO</td><td>Needle Moun-</td><td></td></tr> <tr><td></td><td>tains</td><td>131</td></tr> <tr><td>CO</td><td>Nepesta</td><td>135</td></tr> <tr><td>CO</td><td>Ouray</td><td>153</td></tr> <tr><td>CO</td><td>Pikes Peak</td><td>7</td></tr> <tr><td>CO</td><td>Pueblo</td><td>36</td></tr> <tr><td>CO</td><td>Rico</td><td>130</td></tr> <tr><td>CO</td><td>Silverton</td><td>120</td></tr> <tr><td>CO</td><td>Spanish Peaks</td><td>71</td></tr> <tr><td>CO</td><td>Telluride</td><td>57</td></tr> </tbody> </table>	State	Name of Folio	Folio no.	CA	Jackson	11	CA	Lassen Peak	15	CA	Marysville	17	CA	Mother Lode			District	63	CA	Nevada City			Special	29	CA	Placerville	3	CA	Pyramid Peak	31	CA	Redding	138	CA	Sacramento	5	CA	San Francisco	193	CA	San Luis	101	CA	Santa Cruz	163	CA	Smartsville	18	CA	Sonora	41	CA	Truckee	39	CO	Anthracite -			Crested Butte	9	CO	Apishapa	186	CO	Castle Rock	198	CO	Colorado			Springs	203	CO	Elmoro	58	CO	Engineer			Mountain	171	CO	La Plata	60	CO	Needle Moun-			tains	131	CO	Nepesta	135	CO	Ouray	153	CO	Pikes Peak	7	CO	Pueblo	36	CO	Rico	130	CO	Silverton	120	CO	Spanish Peaks	71	CO	Telluride	57																																																																					
State	Name of Folio	Folio no.																																																																																																																																																																																						
CA	Jackson	11																																																																																																																																																																																						
CA	Lassen Peak	15																																																																																																																																																																																						
CA	Marysville	17																																																																																																																																																																																						
CA	Mother Lode																																																																																																																																																																																							
	District	63																																																																																																																																																																																						
CA	Nevada City																																																																																																																																																																																							
	Special	29																																																																																																																																																																																						
CA	Placerville	3																																																																																																																																																																																						
CA	Pyramid Peak	31																																																																																																																																																																																						
CA	Redding	138																																																																																																																																																																																						
CA	Sacramento	5																																																																																																																																																																																						
CA	San Francisco	193																																																																																																																																																																																						
CA	San Luis	101																																																																																																																																																																																						
CA	Santa Cruz	163																																																																																																																																																																																						
CA	Smartsville	18																																																																																																																																																																																						
CA	Sonora	41																																																																																																																																																																																						
CA	Truckee	39																																																																																																																																																																																						
CO	Anthracite -																																																																																																																																																																																							
	Crested Butte	9																																																																																																																																																																																						
CO	Apishapa	186																																																																																																																																																																																						
CO	Castle Rock	198																																																																																																																																																																																						
CO	Colorado																																																																																																																																																																																							
	Springs	203																																																																																																																																																																																						
CO	Elmoro	58																																																																																																																																																																																						
CO	Engineer																																																																																																																																																																																							
	Mountain	171																																																																																																																																																																																						
CO	La Plata	60																																																																																																																																																																																						
CO	Needle Moun-																																																																																																																																																																																							
	tains	131																																																																																																																																																																																						
CO	Nepesta	135																																																																																																																																																																																						
CO	Ouray	153																																																																																																																																																																																						
CO	Pikes Peak	7																																																																																																																																																																																						
CO	Pueblo	36																																																																																																																																																																																						
CO	Rico	130																																																																																																																																																																																						
CO	Silverton	120																																																																																																																																																																																						
CO	Spanish Peaks	71																																																																																																																																																																																						
CO	Telluride	57																																																																																																																																																																																						
<table border="1"> <thead> <tr> <th style="text-align: left;">State</th> <th style="text-align: left;">Name of Folio</th> <th style="text-align: left;">Folio no.</th> </tr> </thead> <tbody> <tr><td>AL</td><td>Bessemer -</td><td></td></tr> <tr><td></td><td>Vandiver</td><td>221</td></tr> <tr><td>AL</td><td>Birmingham</td><td>175</td></tr> <tr><td>AL</td><td>Gadsden</td><td>35</td></tr> <tr><td>AL</td><td>Montevallo -</td><td></td></tr> <tr><td></td><td>Columbiana</td><td>226</td></tr> <tr><td>AL-GA-TN</td><td>Stevenson</td><td>19</td></tr> <tr><td>AZ</td><td>Bisbee</td><td>112</td></tr> <tr><td>AZ</td><td>Bradshaw</td><td></td></tr> <tr><td></td><td>Mountains</td><td>126</td></tr> <tr><td>AZ</td><td>Clifton</td><td>129</td></tr> <tr><td>AZ</td><td>Globe</td><td>111</td></tr> <tr><td>AZ</td><td>Ray</td><td>217</td></tr> <tr><td>AR-MO</td><td>Eureka Springs</td><td></td></tr> <tr><td></td><td>- Harrison</td><td>202</td></tr> <tr><td>AR-MO</td><td>Fayetteville</td><td>119</td></tr> <tr><td>AR</td><td>Hot Springs</td><td>215</td></tr> <tr><td>AR-OK</td><td>Winslow</td><td>154</td></tr> <tr><td>CA</td><td>Bidwell Bar</td><td>43</td></tr> <tr><td>CA</td><td>Big Trees</td><td>51</td></tr> <tr><td>CA</td><td>Colfax</td><td>66</td></tr> <tr><td>CA</td><td>Downieville</td><td>37</td></tr> </tbody> </table>	State	Name of Folio	Folio no.	AL	Bessemer -			Vandiver	221	AL	Birmingham	175	AL	Gadsden	35	AL	Montevallo -			Columbiana	226	AL-GA-TN	Stevenson	19	AZ	Bisbee	112	AZ	Bradshaw			Mountains	126	AZ	Clifton	129	AZ	Globe	111	AZ	Ray	217	AR-MO	Eureka Springs			- Harrison	202	AR-MO	Fayetteville	119	AR	Hot Springs	215	AR-OK	Winslow	154	CA	Bidwell Bar	43	CA	Big Trees	51	CA	Colfax	66	CA	Downieville	37	<table border="1"> <thead> <tr> <th style="text-align: left;">State</th> <th style="text-align: left;">Name of Folio</th> <th style="text-align: left;">Folio no.</th> </tr> </thead> <tbody> <tr><td>CA</td><td>Jackson</td><td>11</td></tr> <tr><td>CA</td><td>Lassen Peak</td><td>15</td></tr> <tr><td>CA</td><td>Marysville</td><td>17</td></tr> <tr><td>CA</td><td>Mother Lode</td><td></td></tr> <tr><td></td><td>District</td><td>63</td></tr> <tr><td>CA</td><td>Nevada City</td><td></td></tr> <tr><td></td><td>Special</td><td>29</td></tr> <tr><td>CA</td><td>Placerville</td><td>3</td></tr> <tr><td>CA</td><td>Pyramid Peak</td><td>31</td></tr> <tr><td>CA</td><td>Redding</td><td>138</td></tr> <tr><td>CA</td><td>Sacramento</td><td>5</td></tr> <tr><td>CA</td><td>San Francisco</td><td>193</td></tr> <tr><td>CA</td><td>San Luis</td><td>101</td></tr> <tr><td>CA</td><td>Santa Cruz</td><td>163</td></tr> <tr><td>CA</td><td>Smartsville</td><td>18</td></tr> <tr><td>CA</td><td>Sonora</td><td>41</td></tr> <tr><td>CA</td><td>Truckee</td><td>39</td></tr> <tr><td>CO</td><td>Anthracite -</td><td></td></tr> <tr><td></td><td>Crested Butte</td><td>9</td></tr> <tr><td>CO</td><td>Apishapa</td><td>186</td></tr> <tr><td>CO</td><td>Castle Rock</td><td>198</td></tr> <tr><td>CO</td><td>Colorado</td><td></td></tr> <tr><td></td><td>Springs</td><td>203</td></tr> <tr><td>CO</td><td>Elmoro</td><td>58</td></tr> <tr><td>CO</td><td>Engineer</td><td></td></tr> <tr><td></td><td>Mountain</td><td>171</td></tr> <tr><td>CO</td><td>La Plata</td><td>60</td></tr> <tr><td>CO</td><td>Needle Moun-</td><td></td></tr> <tr><td></td><td>tains</td><td>131</td></tr> <tr><td>CO</td><td>Nepesta</td><td>135</td></tr> <tr><td>CO</td><td>Ouray</td><td>153</td></tr> <tr><td>CO</td><td>Pikes Peak</td><td>7</td></tr> <tr><td>CO</td><td>Pueblo</td><td>36</td></tr> <tr><td>CO</td><td>Rico</td><td>130</td></tr> <tr><td>CO</td><td>Silverton</td><td>120</td></tr> <tr><td>CO</td><td>Spanish Peaks</td><td>71</td></tr> <tr><td>CO</td><td>Telluride</td><td>57</td></tr> </tbody> </table>	State	Name of Folio	Folio no.	CA	Jackson	11	CA	Lassen Peak	15	CA	Marysville	17	CA	Mother Lode			District	63	CA	Nevada City			Special	29	CA	Placerville	3	CA	Pyramid Peak	31	CA	Redding	138	CA	Sacramento	5	CA	San Francisco	193	CA	San Luis	101	CA	Santa Cruz	163	CA	Smartsville	18	CA	Sonora	41	CA	Truckee	39	CO	Anthracite -			Crested Butte	9	CO	Apishapa	186	CO	Castle Rock	198	CO	Colorado			Springs	203	CO	Elmoro	58	CO	Engineer			Mountain	171	CO	La Plata	60	CO	Needle Moun-			tains	131	CO	Nepesta	135	CO	Ouray	153	CO	Pikes Peak	7	CO	Pueblo	36	CO	Rico	130	CO	Silverton	120	CO	Spanish Peaks	71	CO	Telluride	57
State	Name of Folio	Folio no.																																																																																																																																																																																						
AL	Bessemer -																																																																																																																																																																																							
	Vandiver	221																																																																																																																																																																																						
AL	Birmingham	175																																																																																																																																																																																						
AL	Gadsden	35																																																																																																																																																																																						
AL	Montevallo -																																																																																																																																																																																							
	Columbiana	226																																																																																																																																																																																						
AL-GA-TN	Stevenson	19																																																																																																																																																																																						
AZ	Bisbee	112																																																																																																																																																																																						
AZ	Bradshaw																																																																																																																																																																																							
	Mountains	126																																																																																																																																																																																						
AZ	Clifton	129																																																																																																																																																																																						
AZ	Globe	111																																																																																																																																																																																						
AZ	Ray	217																																																																																																																																																																																						
AR-MO	Eureka Springs																																																																																																																																																																																							
	- Harrison	202																																																																																																																																																																																						
AR-MO	Fayetteville	119																																																																																																																																																																																						
AR	Hot Springs	215																																																																																																																																																																																						
AR-OK	Winslow	154																																																																																																																																																																																						
CA	Bidwell Bar	43																																																																																																																																																																																						
CA	Big Trees	51																																																																																																																																																																																						
CA	Colfax	66																																																																																																																																																																																						
CA	Downieville	37																																																																																																																																																																																						
State	Name of Folio	Folio no.																																																																																																																																																																																						
CA	Jackson	11																																																																																																																																																																																						
CA	Lassen Peak	15																																																																																																																																																																																						
CA	Marysville	17																																																																																																																																																																																						
CA	Mother Lode																																																																																																																																																																																							
	District	63																																																																																																																																																																																						
CA	Nevada City																																																																																																																																																																																							
	Special	29																																																																																																																																																																																						
CA	Placerville	3																																																																																																																																																																																						
CA	Pyramid Peak	31																																																																																																																																																																																						
CA	Redding	138																																																																																																																																																																																						
CA	Sacramento	5																																																																																																																																																																																						
CA	San Francisco	193																																																																																																																																																																																						
CA	San Luis	101																																																																																																																																																																																						
CA	Santa Cruz	163																																																																																																																																																																																						
CA	Smartsville	18																																																																																																																																																																																						
CA	Sonora	41																																																																																																																																																																																						
CA	Truckee	39																																																																																																																																																																																						
CO	Anthracite -																																																																																																																																																																																							
	Crested Butte	9																																																																																																																																																																																						
CO	Apishapa	186																																																																																																																																																																																						
CO	Castle Rock	198																																																																																																																																																																																						
CO	Colorado																																																																																																																																																																																							
	Springs	203																																																																																																																																																																																						
CO	Elmoro	58																																																																																																																																																																																						
CO	Engineer																																																																																																																																																																																							
	Mountain	171																																																																																																																																																																																						
CO	La Plata	60																																																																																																																																																																																						
CO	Needle Moun-																																																																																																																																																																																							
	tains	131																																																																																																																																																																																						
CO	Nepesta	135																																																																																																																																																																																						
CO	Ouray	153																																																																																																																																																																																						
CO	Pikes Peak	7																																																																																																																																																																																						
CO	Pueblo	36																																																																																																																																																																																						
CO	Rico	130																																																																																																																																																																																						
CO	Silverton	120																																																																																																																																																																																						
CO	Spanish Peaks	71																																																																																																																																																																																						
CO	Telluride	57																																																																																																																																																																																						



State	Name of Folio	Folio no.	State	Name of Folio	Folio no.
CO	Tenmile		MD-VA	St. Marys	136
	District Special	48	MD	Tolchester	204
CO	Walsenburg	68	MA-CT	Holyoke	50
DE-MD-NJ	Dover	137	MI	Ann Arbor	155
DC	Washington	70	MI	Detroit	205
GA-NC-TN	Ellijay	187	MI	Menominee	
GA-TN	Ringgold	2		Special	62
GA-AL	Rome	78	MN	Herman -	
ID	Boise	45		Morris	210
ID-OR	Nampa	103	MN	Minneapolis -	
ID	Silver City	104		St. Paul	201
IL	Belleville -		MO-KS	Joplin District	148
	Breese	195	MO-KS	Leavenworth -	
IL	Carlyle -			Smithville	206
	Centralia	216	MT	Butte Special	38
IL-IN	Chicago	81	MT	Fort Benton	55
IL	Colchester -		MT	Little Belt	
	Macomb	208		Mountains	56
IL-IN	Danville	67	MT	Livingston	1
IL-IA	Galena -		MT	Phillipsburg	196
	Elizabeth	200	MT	Three Forks	24
IL	Gillespie -		NB	Camp Clarke	87
	Mount Olive	220	NB	Scotts Bluff	88
IL	Murphysboro -		NJ	Franklin	
	Herrin	185		Furnace	161
IL	New Athens -		NJ-NY	Passaic	157
	Okawville	213	NJ	Raritan	191
IL	Tallula -		NJ-PA	Trenton	167
	Springfield	188	NM	Deming	207
IN	Ditney	84	NM-CO	Raton -	
IN-IL	Patoka	105		Brilliant -	
KS	Cottonwood			Koehler	214
	Falls	109	NM	Silver City	199
KS	Independence	159	NY-NJ	New York City	83
KS	Syracuse -		NY	Niagara	190
	Lakin	212	NY	Watkins Glen -	
KY-VA-TN	Estillville	12		Catatonk	169
KY-WV-OH	Kenova	184	NC-TN	Asheville	116
KY	London	47	NC-TN	Cranberry	90
KY	Richmond	46	NC-SC	Gaffney -	
ME	Eastport	192		Kings Moun-	
ME	Penobscot Bay	149		tain	222
ME	Rockland	158	NC-TN	Mount Mitch-	
MD-PA-WV	Accident -			ell	124
	Grantsville	160	NC-TN	Nantahala	143
MD	Choptank	182	NC-SC	Pisgah	147
MD-DE-NJ-PA	Elkton -		ND	Bismarck	181
	Wilmington	211	ND-MN	Casselton -	
MD-VA	Nomini	23		Fargo	117
MD-DC	Patuxent	152	ND	Jamestown -	
MD-WV-PA	Pawpaw -			Tower	168
	Hancock	179	OH	Columbus	197

State	Name of Folio	Folio no.	State	Name of Folio	Folio no.
OK	Atoka	79	SD	De Smet	114
OK	Coalgate	74	SD-NB	Edgemont	108
OK	Muscogee	132	SD-NB-IA	Elk Point	156
OK	Tahlequah	122	SD	Huron	113
OK	Tishomingo	98	SD	Mitchell	99
OR	Coos Bay	73	SD	Newell	209
OR	Port Orford	89	SD-NB	Oelrichs	85
OR	Riddle	218	SD	Olivet	96
OR	Roseburg	49	SD	Parker	97
PA	Amity	144	TN	Briceville	33
PA	Barnesboro -		TN	Chattanooga	6
	Patton	189	TN	Cleveland	20
PA	Beaver	134	TN	Columbia	95
PA	Brownsville -		TN-NC	Greeneville	118
	Connellsville	94	TN	Kingston	4
PA	Burgettstown -		TN-NC	Knoxville	16
	Carnegie	177	TN	Loudon	25
PA	Claysville	180	TN	Matnardville	75
PA-DE	Coatesville -		TN	McMinnville	22
	West Chester	223	TN	Morristown	27
PA	Ebensburg	133	TN	Pikeville	21
PA	Elders Ridge	123	TN-NC	Roan Mountain	151
PA	Elkland- Tioga	93			
PA	Fairfield -		TN	Sewanee	8
	Gettysburg	225	TN	Standingstone	53
PA	Foxburg -		TN	Wartburg	40
	Clarion	178	TX	Austin	76
PA-NY	Gaines	92	TX	El Paso	166
PA	Hollidaysburg		TX	Llano - Burnet	183
	- Huntingdon	227	TX	Nueces	42
PA	Indiana	102	TX	Uvalde	64
PA	Johnstown	174	TX	Van Horn	194
PA	Kittanning	115	UT	Tintic Special	65
PA	Latrobe	110	VA-TN	Bristol	59
PA	Masontown -		VA-MD	Fredericksburg	13
	Uniontown	82	VA-MD-WV	Harpers Ferry	10
PA	Mercersburg -		VA-WV	Monterey	61
	Chambersburg	170	VA-NC	Norfolk	80
PA-NJ-DE	Philadelphia	162	VA-WV	Pocahontas	26
PA	Rogersville	146	VA-WV	Staunton	14
PA	Rural Valley	125	VA-WV	Tazewell	44
PA	Sewickley	176	WA	Ellensburg	86
PA	Somerset -		WA	Mount Stuart	106
	Windber	224	WA	Snoqualmie	139
PA-NY	Warren	172	WA	Tacoma	54
PA	Waynesburg	121	WV	Buckhannon	34
SD	Aberdeen -		WV	Charleston	72
	Redfield	165	WV-VA	Franklin	32
SD	Alexandria	100	WV-OH	Huntington	69
SD	Belle Fourche	164	WV-MD	Piedmont	28
SD	Central Black Hills	219	WV	Raleigh	77

State	Name of Folio	Folio no.
WI-IA-IL	Lancaster - Mineral Point	145
WI	Milwaukee Special	140
WY	Absaroka	52
WY-SD-MT	Aladdin	128
WY	Bald Mountain - Dayton	141
WY	Cloud Peak - Fort McKinney	142
WY	Devils Tower	150
WY	Hartville	91
WY	Laramie - Sherman	173
WY-SD	Newcastle	107
WY-SD	Sundance	127
WY	Yellowstone National Park	30



**Abbreviations of State Names**

AL	ALABAMA	NB	NEBRASKA
AK	ALASKA	NV	NEVADA
AZ	ARIZONA	NH	NEW HAMPSHIRE
AR	ARKANSAS	NJ	NEW JERSEY
CA	CALIFORNIA	NM	NEW MEXICO
CO	COLORADO	NY	NEW YORK
CT	CONNECTICUT	NC	NORTH CAROLINA
DE	DELAWARE	ND	NORTH DAKOTA
DC	DIST. of COLUMBIA	OH	OHIO
FL	FLORIDA	OK	OKLAHOMA
ID	IDAHO	OR	OREGON
IL	ILLINOIS	PA	PENNSYLVANIA
IN	INDIANA	RI	RHODE ISLAND
IA	IOWA	SC	SOUTH CAROLINA
KS	KANSAS	SD	SOUTH DAKOTA
KY	KENTUCKY	TN	TENNESSEE
LA	LOUISIANA	TX	TEXAS
ME	MAINE	UT	UTAH
MD	MARYLAND	VT	VERMONT
MA	MASSACHUSETTS	VA	VIRGINIA
MI	MICHIGAN	WA	WASHINGTON
MN	MINNESOTA	WV	WEST VIRGINIA
MS	MISSISSIPPI	WI	WISCONSIN
MO	MISSOURI	WY	WYOMING
MT	MONTANA		

**California Important Farmland Mapping Program Update**

**A Note from the Program Manager**

Currently, we are computerizing 1986 field mapped information compiled to update the 1984 Important Farmland Maps. We expect to complete the 1986 update in spring of 1988 and then begin the 1988 field mapping season shortly thereafter. This update/sequence of field mapping followed by computer processing forms the basis for the two-year update.

In 1985, the California Legislature authorized production of Interim Farmland Maps for counties lacking U.S. Department of Agriculture Soil Conservation Service soil survey information. These Interim Farmland Maps categorize farmland into Irrigated Farmland and Non-irrigated Farmland in contrast to the standard four classes of important farmlands. The categories: Grazing Land, Urban and Built-up Land, Other Land, and the overlay available for Land Committed to Nonagricultural Use remain the same. We have recently completed interim mapping of Yuba, Colusa, and Butte Counties and portions of Kern and Tulare Counties. Preliminary interim farmland maps are now undergoing a public review process and should be finalized and available for distribution this spring.

Public meetings to review the maps are usually held at the respective county's Board of Supervisors meetings and with county planning staff. Workshops with local chapters of the California Cattlemen's Association are held for the mapping of grazing lands.

The Program utilizes student assistants (student interns) on a part-time basis throughout the year, and fulltime during the summer mapping season. These student positions are advertised at local schools, California State University - Sacramento and U.C. Davis. Interviews are planned for the spring of 1988, for hiring students to do summer field mapping and updating. Students from outside the Sacramento area are invited to submit resume; if offered a job, they should consider living in Sacramento for the summer.

Please call Emily Kishi at (916) 324-0868 to order maps.

[continued]

Sincerely,

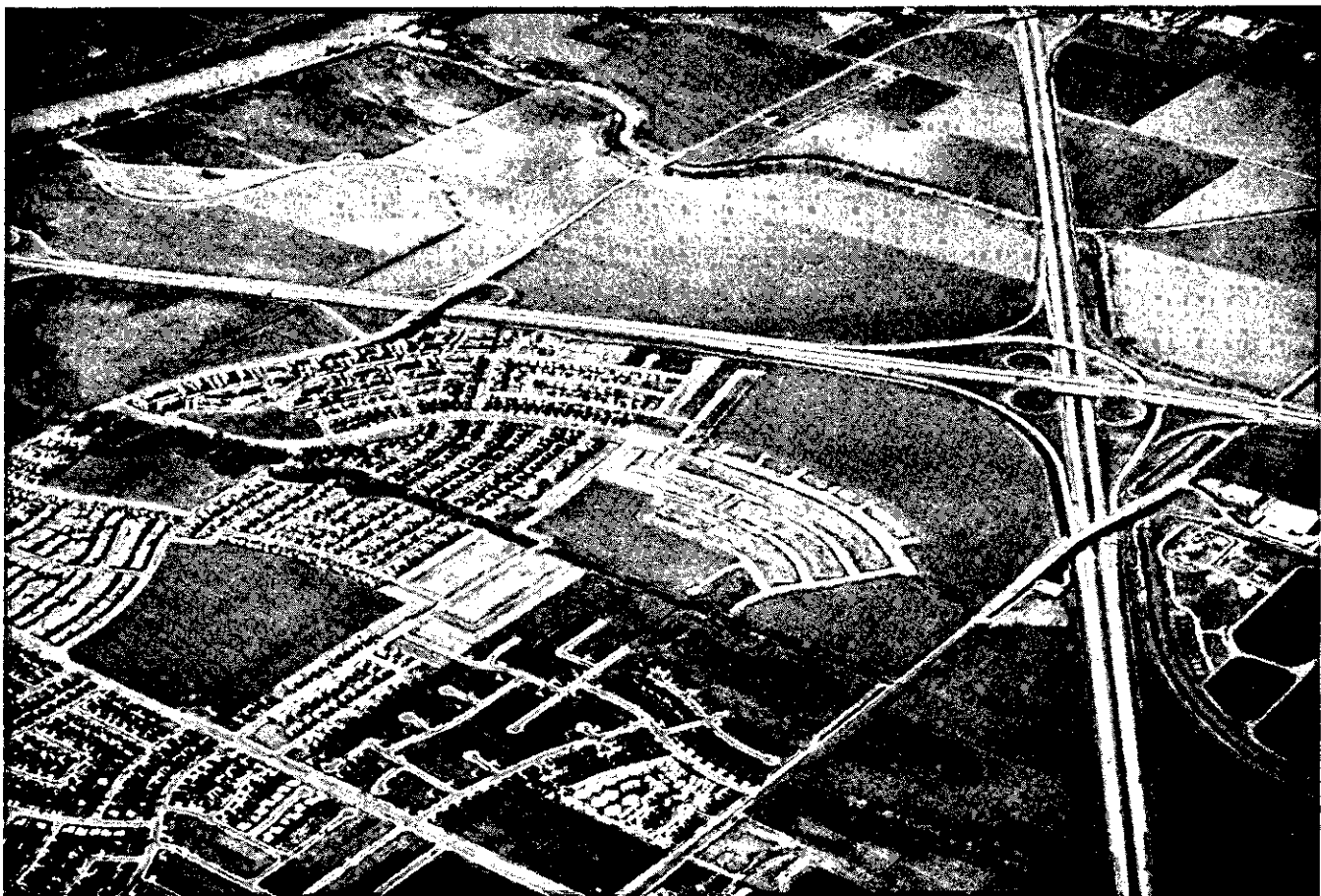
/s/ Robert Yoha  
Program Manager  
Farmland Mapping and Monitoring Program  
Office of Land Conservation  
State of California  
1516 9th Street, Room 400  
Sacramento, CA 95814

**Farmland Mapping & Monitoring Program**

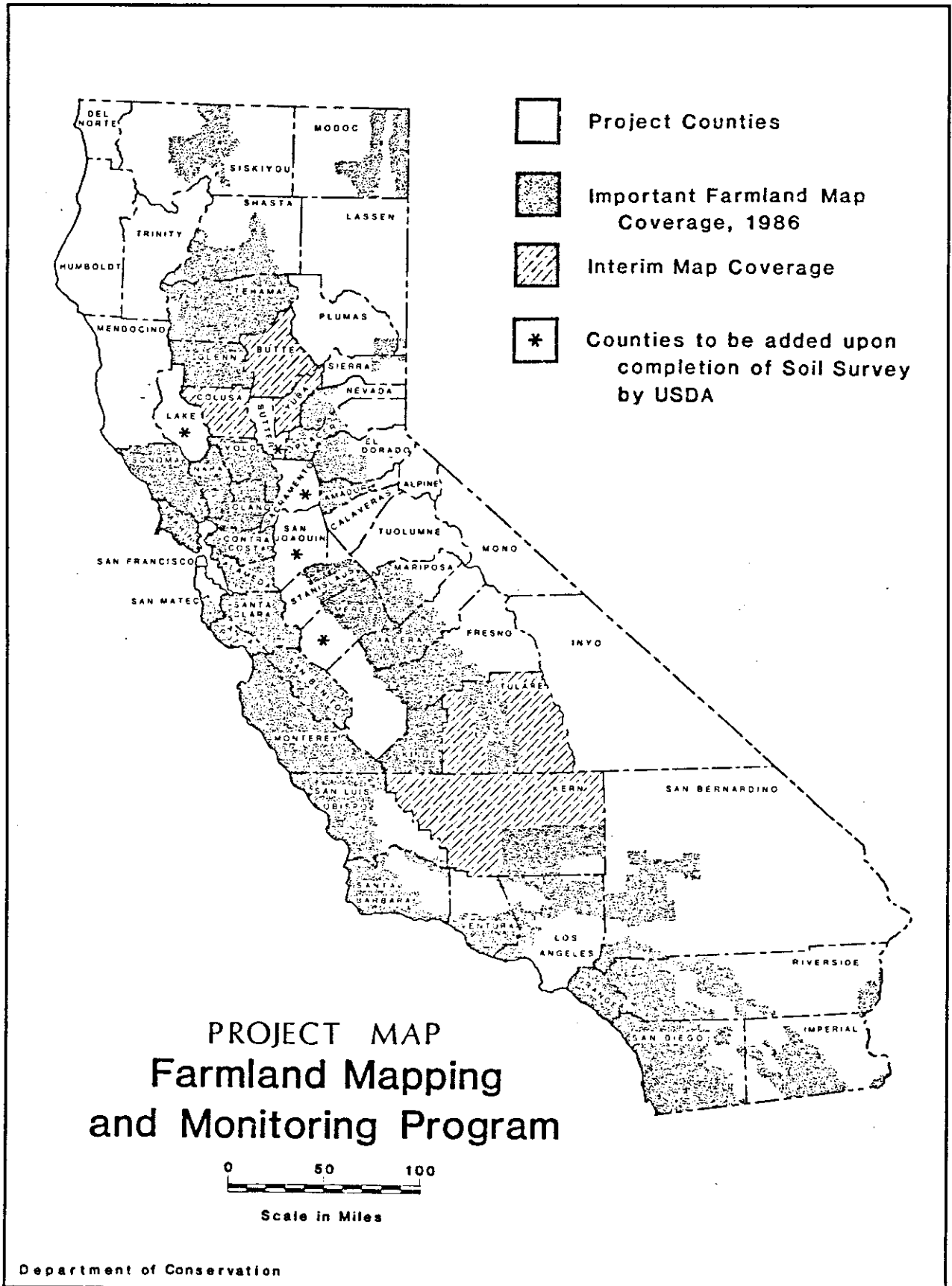
**Important Farmland Series Maps Available**

ALAMEDA	MERCED	SAN MATEO
AMADOR	MODOC	SANTA BARBARA
CONTRA COSTA	MONTEREY	SANTA CLARA
EL DORADO	NAPA	SANTA CRUZ
FRESNO	NEVADA	SHASTA
GLENN	ORANGE	SIERRA
IMPERIAL	PLACER	SISKIYOU
KERN	PLUMAS	SOLANO
KINGS	RIVERSIDE	SONOMA
LOS ANGELES	SAN BENITO	STANISLAUS
MADERA	SAN BERNARDINO	TEHAMA
MARIN	SAN DIEGO	VENTURA
MARIPOSA	SAN LUIS OBISPO	YOLO

Typical California Farmland Showing Typical Encroachment by Typical Urban Expansion



See next page for map depicting status of California Farmland Mapping Program



**Agro Cartography**

by

**David Lundquist**

Shields Library

University of California

Davis

First in a Series

This is the first of a regular series of contributions in the field of agricultural mapping. In it, maps and mapping developments will be discussed. Included will be listings of new (and maybe some not so new) agricultural and related maps. To assist me in this venture I would appreciate hearing of any agricultural mapping or developments as they come to your attention. Please send your contributions to the above at: Map Section, Shields Library, University of California, Davis, CA 95616.

**NEW MAPPING****Argentina**

**Mapa Ecologico de la Republica Argentina.**  
Fundacion Agro Palermo, Sarmiento 1183, Piso 6°  
(1041), Buenos Aires, Argentina.

The purpose of the map, according to the accompanying explanatory text, is to present the different ecological areas with an outline of their topography, soils and climate and of their agricultural potential. By showing the above, it is the hope of the publishers to inform the world of Argentina's agricultural potential. The map is available in six languages: Spanish, English, French, German, Arabic and Italian. Be certain to obtain the accompanying text, "Argentina: Its ecological reality", as it includes extensive information on each region. A good addition to any collection collecting agricultural and/or Latin American maps.

**Europe**

**The European Community — Farming.**  
1:4,000,000. ©1987. Commission of the European Communities. European Community Information Service, 2100 M. St. NW, Suite 707, Washington, D.C. 20037.

An improved update of the 1985 edition,

which lacked Spain and Portugal, this colored map shows 4 types of agricultural areas: "Agricultural land, mountain and hill areas, less-favored areas and small areas with specific handicaps." Additionally, the map depicts pictorially the most representative enterprises in each area.

There are seventy block diagrams which give basic statistics on European farming, by country, with comparisons with the United States and the Soviet Union.

This is a colorful map which effectively shows the distribution of farming in Europe. While the 1:4,000,000 scale does not permit a great deal of detail, it nevertheless does allow for a comprehensive view of the situation for the area covered. A good display map.

**The Types of Agriculture Maps of Europe.**  
1:2,500,000. 9 sheets. Edited by Prof. Dr. J. Kostrowicki. Publ. by the Inst. of Geography and Spatial Organization, Polish Academy of Sciences, distributed by D.H.N., the Trade Center of Polish Science, P.O. Box 410, 00-950 Warszawa, ul. Miodowa 2. Price: US\$ 98. + air mail US\$ 15.

Based on concepts and methods adopted by the Commission on Agricultural Typology of the International Geographical Union, this map is de-

scribed in accompanying documentation as "a synthetic map representing all significant characteristics or attributes of agriculture: social, operational, productive and structural expressed in a quantitative way...." Begun as an attempt to map world agriculture in the early 70's the project experienced numerous delays and was never attempted. Out of the ashes of that project however was borne this agricultural map of Europe. It is an interesting product showing neither land use nor crop/livestock distribution. At first, the map is difficult to understand. With some of the data expressed by geographic rather than political boundaries. Other agricultural types are expressed in a "columnar" fashion with apparent disregard for any type of geographic boundaries, latitude or longitude. There is no explanation on the map for this apparent anomaly. However, in accompanying "Comments," apparently by the editor, it is explained. The "columnar" data represents transitional areas. The map itself expresses a wide range of agricultural types, 88 in all according to the "Comments."

If possible, order the set from the publisher as it has been seen in dealers lists at a substantial markup.

---

### South Africa

**South Africa: Agricultural Activity and Production.** Central Intelligence Agency (U.S.). 1986. Scale not indicated.

A map of modest proportions, it nevertheless offers a broad comprehensive view of the country's agricultural industry and its distribution. Also included is a circle "pie" graph showing percentage of total gross value of agricultural production in 1981/82. A good map to include in a paper.

---

### United States

**Farming on the Fringe.** American Farmland Trust, 1717 Massachusetts Ave. NW, Washington, D.C. 20036. \$12.00 folded, \$15.00 rolled.

It is the premise of the American Farmland Trust "that farming should be important in every state." They have, therefore, produced this map "to encourage interest in the quality and location of our

best agricultural resources and the pressures and options which may effect them from a national perspective."

The map identifies those counties The Trust considers to be High Market Value Farming Counties (HMVFC) inside and outside metropolitan statistical areas. From this they conclude that "the highest market value farming counties in most states are at the urbanizing metropolitan fringe." Based on the *Census of Agriculture* for 1974, 1978 and 1982 and the 1980 *Census of Population* the conclusions are certainly worth considering. Touching on the areas of land use planning, food production and the future of agriculture in the United States it will be of value and interest to a wide clientele. It includes definitions and data sources, "quick facts" and a HMVFC summary profile. Good exhibit material.

---

### Wisconsin

**Generalized Soil Productivity for Field Crops.** Compiled by F. D. Hole. 1975. 1:500,000. \$1.50.

**Generalized Soil Productivity for Canning Crops.** Compiled by F. D. Hole. 1975. 1:500,000. \$1.50.

Wisconsin Geological and Natural History Survey. Map and Publications Sales Office. Univ. of Wisconsin-Extension, 3817 Mineral Point Road, Madison, Wisc. 53705.

The maps show, in general terms, those soil areas suitable to varying degrees for field and canning crops. Included in the field crops categories are apparently corn and oats; for canning crops, sweet corn, peas, snap beans and beets. There are 4 ratings, from most productive to least productive, with an added category for the canning crops map: most productive with irrigation.




---

Agro Cartography

## New Mapping of Western North America

by

**Joe Crotts**  
California State University  
Chico

### ALASKA

U.S. Bureau of Land Management. **Alaska, land status map, June, 1986.** Washington, D.C.: U.S. Bureau of Land Management, 1986. 1:2,500,000. 80 x 115 cm. (Includes index and inset of the Aleutian Islands).

U.S. Forest Service. **Crow Admiralty canoe/kayak routes : Admiralty Island National Monument Wilderness : Chatham Area-Tongass National Forest.** Juneau : U.S. Forest Service, 1986. 1:63,360. 57 x 63 cm. LC Class. No.: G4372.A2E63 1986 U38 (Relief shown by contours and spot heights).

U.S. Forest Service. **Prince of Wales area, Tongass National Forest, Alaska, 1987.** Juneau: U.S. Forest Service, 1987. 1:250,000. 93 x 67 cm. LC Class. No: G4372.T6 1987 .U54 (Relief shown by contours and spot height).

University of Alaska Press. **Alaska Exploration Map Series.** Fairbanks, AK: University of Alaska Press, 1987. \$26.50 + \$1.50 postage and handling. Available from the Publisher: Singers Hall VAF, Fairbanks, AK 99775-1580 (4 maps set: "Europe Discovers Alaska: 1728-1794," "Russian Alaska: 1794-1867," "America Explores Alaska: 1867-1897," and "Last Frontiers in Alaska: 1897-1941.")

Updike, R.G. & Ulery, C.A. **Engineering-Geologic map of Southwest Anchorage, Alaska.** Fairbanks, Alaska: Alaska Division of Geological & Geophysical Surveys, 1986. 1:15,840. \$3.00. Available from the publisher: 794 University Ave., Fairbanks, Alaska, 99709.

### ARIZONA

The Raven maps and Images. **Raven maps: Arizona.** Medford, Oregon: The Raven maps and Images, 1987. \$20.00. Available from 34 N. Central Ave., Medford, OR 97501 (Large shaded relief map shown by colors).

U.S. Bureau of Land Management. **Phoenix Resource Area.** Phoenix: U.S. Bureau of Land Management, 1987. 1:250,000. 97 x 92 cm. LC Class. No.: G4331.G46 1987 .U53. (shows land ownership in portions of Arizona).

U.S. Forest Service. **Tonto National Forest, Arizona.** Albuquerque, New Mexico: U.S. National Forest Service, 1986. 1:126,720. 122 x 124 cm. LC Class. No.: G4332 T6 1986 .U5 (Relief shown by hachures and spot heights).

### CALIFORNIA

Alpha, T. R. **Oblique map of the northern Sierra Nevada, California, showing location of gold-bearing areas.** Denver, Colorado: U.S. Geological Survey, 1987. 36 x 47 inches. \$1.50. (MF-1981)

Ford, Ray. 1- **San Rafael Wilderness and Vicinity.**  
2- **A Hiker's Guide to the Santa Barbara front Country.**  
3- **A Hiker's Guide to the Dick Smith Wilderness.**  
4- **Santa Barbara Mountain Bike Routes.**  
Santa Barbara, CA: McNally and Loftin, 1987. \$2.95. Available from book and camping supply stores or by mail to the publisher: 5390 Overpass Rd., Santa Barbara, CA 93111.



The Raven maps and Images. **Raven maps: California.** Medford, Oregon: The Raven maps and Images, 1987. 1:750,000. \$20,000. Available from 34 N. Central Ave., Medford, OR 97501 (Large shaded relief map shown by colors).

U.S. Bureau of Land Management. **Desert access guide: California Desert National Conservation District.** Riverside, Calif.: U.S. Bureau of Land Management, 198-?. 1:100,000. 103 x 71 cm. LC Class. No.: G4362.C34 s100 .U5 (Relief shown by spot heights).

U.S. Geological Survey. **Death Valley National Monument and vicinity, California-Nevada.** Reston, Va.: U.S. Geological Survey, 1977. 1:250,000. 84 x 56 cm. LC Class. No.: G4362 D4 1977 U34 (Relief shown by shading, contours, and spot heights).

U.S. National Park Service. **Channel Islands.** Washington, D.C.: U.S. National Park Service, 1984. Scale varies. 60 x 42 cm. LC Class. No.: G4362 C432 1984 U5 (Relief shown by spot heights).

Wright, L. A. **Geology of the north 1/2 Confidence Hills 15' quadrangle, Inyo County, California: The area of the Amargosa chaos.** Sacramento, CA: California Division of Mines and Geology, 1984. 1:24,000. 57 x 93 cm. LC Class. No.: G4363 I6 1984 C3.

---

### CENTRAL PLAINS

National Geographic Society (U.S.) **The Making of America, Central Plains.** Washington, D.C.: National Geographic Society, 1985. 1:2,301,000. 52 x 69 cm. LC Class. No.: G4131.C46 1985 .N3.

---

### COLORADO

Robson, S.G. & Banta, E.R. **Geology and hydrogeology of deep bedrock aquifers in eastern Colorado.** Denver, Colo.: U.S. Geological Survey, 1987. \$29.25. Available from Map Distribution, Box 25286, Building 41, Federal Center, Denver, CO 80225 (includes structure maps, tables, correlation charts, and text on the sheets).

U.S. Bureau of Land Management. **1984 transportation map, Royal Gorge resource area, Canon City district, Colorado.** Denver: U.S. Bureau of Land

Management, 1984. 1:125,000. 128 x 116 cm. LC Class. No.: G4312.R75 1984 .U5 (Also shows land status and developed recreation sites).

U.S. National Park Service. **Rocky Mountain National Park, Colorado.** Washington, D.C.: U.S. National Park Service, 1983. 1:105,000. 49 x 42 cm. LC Class. No.: G4312 R6 1983 .U5 (Relief shown by shading and spot heights).

---

### IDAHO

Bigelow, B.B., et. al. **Water withdrawn for irrigation in 1980 on the Snake River plain, Idaho and eastern Oregon.** Denver, Colorado: U.S. Geological Survey, 1987. 1:1,000,000. Sheet 1, 38 x 49 inches; sheet 2, 38 x 45 inches. \$7.20. HA-0690. Available from the publisher.

Othberg, Kurt L. **Landforms and surface deposits of Long Valley, Valley County, Idaho.** Moscow: Idaho Geological Survey, 1987. 1:63,360. \$7.60. Map 5. Available from the publisher: University of Idaho, Moscow, ID 83843. (1 sheet, in color)

U.S. Forest Service. **Boise National Forest travel map, 1987.** Ogden, Utah: U.S. Forest Service, 1987. 1:70,000. 120 x 64 cm. LC Class. No.: G4272.B6 1987 .U55. (Relief shown by hachures and spot heights)

U.S. Forest Service. **Sawtooth National Forest (North Division), Idaho, 1985.** Ogden, Utah: U.S. Forest Service, 1972. 1:175,000. 82 x 81 cm. LC Class. No.: G4272 S4 1972 U5 1985 (Relief shown by hachures and spot heights).

U.S. Forest Service. **The Salmon River of no return.** Missoula, Mont.: U.S. Forest Service, 1986. 1:100,000. 51 x 91 cm. LC Class. No.: G4272 S32 1986 U5 (Relief shown by hachures and spot heights).

U.S. Forest Service. **Travel plan, Sawtooth National Forest.** Washington, D.C.: U.S. Forest Service, 1980. 1:170,000. 76 x 92 cm. LC Class. No.: G4272.S4 1979 .U55 (Relief shown by hachures and spot heights).

---

### MONTANA

U.S. Bureau of Land Management. **Public lands in Montana.** Washington, D.C.: U.S. Bureau of Land

Management, 1983. 1:160,000. 71 x 48 cm. LC Class. No.: G4251.G5 s158 .U5 (Relief shown by hachures and spot heights).

U.S. Forest Service. **Absaroka Beartooth Wilderness: Custer, Gallatin, and Shoshone National Forest, Montana and Wyoming.** Washington, D.C.: U.S. Forest Service, 1985. 1:100,000. 98 x 81 cm. LC Class. No.: G4252.A28E63 1985 U38 (Relief shown by hachures and spot heights).

U.S. Forest Service. **Custer National Forest (Beartooth Division) Montana and Wyoming.** Missoula, Mont.: U.S. Department of Agriculture, Forest Service, 1986. 1:126,720. 91 x 136 cm. LC Class. No.: G4252 C9 1986 U5 (Relief shown by hachures and spot heights).

U.S. Forest Service. **Deerlodge National Forest, Montana.** Missoula: U.S. Forest Service, 1983. 1:168,960. 83 x 96 cm. LC Class. No.: G4252.D4 1983 .U5 (Relief shown by hachures and spot heights).

U.S. Forest Service. **Flathead National Forest: Swan Lake Ranger District.** Missoula: U.S. Forest Service, 1983. 1:63,000. 124 x 79 cm. LC Class. No.: G4252.F51 1983 .U5 (Relief shown by hachures and spot heights).

U.S. Forest Service. **Lewis and Clark National Forest (Jefferson Division) Montana.** Missoula: U.S. Forest Service, 1980. 1:226,720. 86 x 143 cm. LC Class. No.: G4252 L4 1980 .U5 (Relief shown by hachures and spot heights).

U.S. Forest Service. **Tally Lake Ranger District, Flathead National Forest.** Missoula: U.S. Forest Service, 1986. 1:63,360. 124 x 80 cm. LC Class. No.: G4252.F51 1986 U5. (Relief shown by hachures and spot heights).

U.S. Geological Survey. **State of Montana.** Reston, VA: U.S. Geological Survey, 1984. 1:500,000. 110 x 187 cm. LC Class. No.: G4251 G46 1984 U52 (Relief shown by hachures and spot heights).

---

## NEVADA

Bell, John W. **Quaternary fault map of Nevada, Reno sheet.** Reno, Nevada: Nevada Bureau of Mines and Geology, University of Nevada, Reno, 1984. 1:250,000. 44 x 69 cm. LC Class. No.: G4351 C55 1984

B41 (Relief shown by contour lines and spot heights).

Nevada Bureau of Mines and Geology. **Complete Bouguer gravity map of Nevada.** Reno, Nevada: Nevada Bureau of Mines and Geology, University of Nevada, Reno, 1985. 1:250,000. 44 x 67 cm. LC Class. No.: G4351 C95 M14 s250 N41 (Relief shown by hachures and spot heights).

Nevada Magazine. **Nevada Magazine's Ghost Towns and Historic Sites.** Carson City, Nevada: Nevada Magazine, 1987. 1:1,000,000. 34 x 22 cm. \$4.50. Available from Nevada Magazine, Capitol Complex, Carson City, Nevada 98710-1115 (map includes historic markers, parks, and tourist features).

Plouff, Donald. **Aeromagnetic map of Nevada, Walker Lake sheet.** Reno, Nevada: Nevada Bureau of Mines and Geology, University of Nevada, Reno, 1986. 1:250,000. 44 x 70 cm. LC Class. No.: G4352 W2 C93 1986 .P7 (Relief shown by hachures and spot heights).

Saltus, R. W. **Aeromagnetic map of Nevada, Caliente sheet.** Reno, Nevada: Nevada Bureau of Mines and Geology, University of Nevada, Reno, 1986. 1:250,000. 56 x 91 cm. and 22 x 28 cm. LC Class. No.: G4352 C2C93 1986 Sa3 (Relief shown by hachures and spot heights).

Stager, Harold Keith. **Tungsten deposits of Nevada.** Reno, Nevada: Nevada Bureau of Mines and Geology, University of Nevada, Reno, 1985. 1:1,000,000. 81 x 72 cm. LC Class. No.: G4351 H2 1985 N41 (Relief shown by contour lines).

U.S. Forest Service. **Toiyabe National Forest, Nevada.** Ogden, Utah: U.S. Forest Service, 1984. 1:63,000. 57 x 56 cm. LC Class. No.: G4353 T6 1984 U65 (Relief shown by contours, hachures, and spot heights).

Vikre, Peter G. **Geologic map of the Buckskin Mountain quadrangle, Nevada.** Reno, Nevada: Nevada Bureau of Mines and Geology, University of Nevada, Reno, 1985. 1:24,000. 58 x 47 cm. LC Class. No.: G4352 B96C5 1985 N41.

---

## NORTH AMERICA'S ACTIVE WEST

National Geographic Society. **The shaping of a**

**continent: North America's Active West.** Washington, D.C.: National Geographic Society, 1985. 45 x 57 cm. (On verso: *Earth's Dynamic Crust*)

---

### NORTHERN PLAINS

National Geographic Society (U.S.) **The making of America: Northern plains.** Washington, D.C.: National Geographic Society, 1986. 1:2,440,000. 52 x 68 cm. LC Class. No.: G4130 1986 N37 (Relief shown by shading and spot heights).

---

### OKLAHOMA

National Geophysical Data Center, National Oceanic and Atmospheric Administration. **Geothermal resources and temperature gradients of Oklahoma.** Norman, OK: Oklahoma Geological Survey, 1984. 1:500,000. 97 x 133 cm. LC Class. No.: G4201 .C9 1984 .O4.

---

### OREGON

Peterson, Carolyn P. and others. **Geologic map of the ocean floor off Oregon and the adjacent continental margin.** Portland, OR: U.S. Department of Geology & Mineral Industries, 1986. 1:500,000. GMS-42 (Base map includes topographic and bathymetric contours).

The Raven maps and Images. **Raven map: Oregon.** Medford, OR: The Raven maps and Images, 1987. \$20.00. Available from 34 N. Central Ave., Medford, OR 97501 (Large shaded relief map shown by colors).

U.S. Bureau of Land Management. **Planning for the public plans in the Medford District.** Medford, OR: U.S. Bureau of Land Management, 1986. 1:300,000. 48 x 63 cm. LC Class. No.: G4292 M48 G4 1986 U54.

U.S. Dept. of the Interior. **Planning for the public plans in the Coos Bay District.** Coos Bay, OR: U.S. Dept. of the Interior, 1986. 1:375,000. 43 x 64 cm. LC Class. No.: G4393 C77 G45 1986 U5.

U.S. Dept. of the Interior. **Planning for the public plans in the Salem District.** Salem, OR: U.S. Dept. of the Interior, 1986. 1:375,000. 43 x 63 cm. LC Class.

No.: G4392 Su3 G4 1986 U54.

U.S. Forest Service. **Ochoco National Forest and Crooked River National Grassland.** Portland, OR: U.S. Forest Service, 1985. 1:126,720. 121 x 162 cm. LC Class. No.: G4292 O3 1985 U5 (Relief shown by hachures and spot heights).

U.S. Forest Service. **Umpqua National Forest, Oregon.** Portland, OR: U.S. Forest Service, 1985. 1:126,720. 105 x 92 cm. LC Class. No.: G4292 U6 1985 U55 (Relief shown by hachures and spot heights).

U.S. Forest Service. **Winema National Forest, Oregon: forest visitor map.** Portland, OR: U.S. Forest Service, 1986. 1:126,720. 112 x 78 cm. LC Class. No.: G4292 W6 1986 U5 (Relief shown by hachures and spot heights).

U.S. Forest Service. **Wallowa-Whitman National Forest, travel plan.** Baker, OR: U.S. Forest Service, 1986. 133 x 122 cm. LC Class. No.: G4292 W31E63 1986 U56 (Relief shown by hachures and spot heights).

---

### PACIFIC OCEAN

Lockridge, Patricia A. **Tsunamis in the Pacific Basin.** Boulder, CO: National Geophysical Data Center, 1983. 1:17,000,000. 104 x 116 cm. LC Class. No.: G9231 C76 1983 L6 (Includes descriptive indexes of Tsunamis and earthquakes in the Pacific Basin, notes, and diagram of Tsunamis runup height).

---

### UTAH

U.S. Forest Service. **Boise National Forest travel map.** Ogden, UT: U.S. Forest Service, 1987. 1:170,000. 120 x 64 cm. LC Class. No.: G4272.B6 1987 U55 (Relief shown by hachures and spot heights).

U.S. Forest Service. **Sawtooth Wilderness, Sawtooth National Recreation Region.** Ogden, UT: U.S. Forest Service, 1974. 1:126,720. 65 x 42 cm. LC Class. No.: G4272.S4 1974 U55 (Relief shown by hachures and spot heights).

U.S. Forest Service. **Uinta National Forest, Utah: Travel map/recreation guide.** Ogden, UT: U.S. Forest Service, 1986. Scale not given. 104 x 75 cm. LC

Class. No.: G4342.U4 1986 .U54 (Relief shown by hachures and spot heights).

U.S. Forest Service. **Wasatch-Cache National Forest travel plan.** Washington, D.C.: U.S. Forest Service, 1980. 1:126,720. 58 x 90 cm. G4342.UW3 1980 .U5 (Relief shown by hachures and spot heights).

Whitney, J. Gordon. **Federal coal leases, southern Utah, November 1986.** Utah: U.S. Bureau of Land Management, 1986. 1:100,000. 97 x 112 cm. LC Class. No.: G4341 .H9 1986 .W55 (Shows coal leases).

### WASHINGTON

Molenaar Pictorial Maps. **Puget Sound region, Washington.** Burley, WA: Molenaar Pictorial Maps, 1987. 1:380,000. \$7.50: folded; \$8.50: roll; \$17.95: laminated. Available from the publisher, Box 62, Burley, WA 98322 (1 sheet in color).

The Raven maps and Images. **Raven map: Washington.** Medford, Oregon: The Raven maps and Images, 1987. 1:500,000. \$20.00. Available from 34 N. Central Ave., Medford, OR 97501 (Large shaded relief shown by colors).

U.S. Forest Service. **Five year action plan for the Gifford Pinchot National Forest, 1985 to 1989.** Portland, OR: U.S. Forest Service, 1985. 1:130,000. 63 x 91 cm. LC Class. No.: G4282 G5 G45 1985 U5 (Relief shown by hachures and spot heights).

U.S. Forest Service. **Gifford Pinchot National Forest, visitor map, Washington.** Portland, OR: U.S. Forest Service, 1983. 1:126,720. 119 x 89 cm. LC Class. No.: G4282 G5 G5 1983 U55 (Relief shown by hachures and spot heights).

U.S. Forest Service. **Okanogan National Forest, Washington.** Portland, OR: U.S. Forest Service, 1983. 1:200,000. 56 x 86 cm. LC Class. No.: G4282 G5 O3 1983 U5 (Relief shown by hachures and spot heights).

U.S. Forest Service. **Pacific Crest Trail: Northern portion, Washington, 1986.** Portland, OR: U.S. Forest Service, 1986. 1:63,360. 90 x 60 cm. LC Class. No.: G4242 .P33E63 1986 U55 (Relief shown by hachures and spot heights).

U.S. National Park Service. **Main trails & backcountry camp areas, North Cascades complex, Washington.** Washington, D.C.: U.S. National Park Service, 1983. 1:160,000. 67 x 56 cm. LC Class No.: G4282 N62 E63 1983 U54. (Relief shown by hachures and spot heights).

Washington Department of Natural Resources. **State geologic maps of the south west quadrant of Washington.** Olympia, WA: Washington Department of Natural Resources, 1987. 1:100,000. \$1.00 - \$2.50 per map. Available from the publisher: Mail Stop PY-12, Olympia, WA 98504.

### WYOMING

U.S. Bureau of Land Management. **Land status, State of Wyoming.** Cheyenne, WY: U.S. Bureau of Land Management, 1984. 1:500,000. 96 x 122 cm. LC Class No.: G4261 .G4 1984 U56. (Relief shown by contours and spot heights).

### New Mapping of Western North America

[These citations were contributed by Larry Cruse, *IB* Editor.]

Union - Tribune Publishing Company. **Chain drug & mass merchandiser outlets of San Diego County.** San Diego, CA: Union - Tribune Publishing Company, 1986. 1 map, 58 x 44 cm., ca.1:200,000. Distribution of drug store and discount retail stores. \$4.

Union - Tribune Publishing Company. **Major food outlets of San Diego County.** San Diego, CA: Union - Tribune Publishing Company, 1986. 1 map, 59 x 44 cm., ca.1:126,720. Distribution in five classes. \$4.

Union - Tribune Publishing Company. **San Diego County automobile dealer location map.** San Diego, CA: Union - Tribune Publishing Company, 1986. 1 map, 86 x 55 cm., ca.1:126,720. Distribution by car make. \$4.

Marketing Services, Union - Tribune Publishing Co., P.O. Box 191, San Diego, CA 92112.

# MicroCartography

by

**Larry Cruse**

Map Section

University Library

University of California-San Diego

24th in a Series

The following is an explanatory essay extorted from Bill Hunt to describe a new microfiche set we worked together on over the past year or so. The project stemmed from my persistent claims that color microfiche should be exploited, his import of one set of Chilean 1:50K topo sheets, and the general poverty we all have in common. As my colleagues and peers, it is only fair warning to divulge this total enthusiastic compromise of integrity, tempered with a sample fiche in this issue of the *IB*, funded jointly by Bill and the Fiche2000 Company. Unreserved in enthusiasm does not blind me to the practical imperfections of the result. These fiche are inexpensive; (see Bill's article following) as a concession to the principle Bill might sell many at a small profit or none at a large one; libraries on limited budgets could perhaps introduce a really hard to obtain topo set to their users; users might be more tolerant under the circumstances of something available/affordable no other way, and we might all gain valuable experience in evolving a symbiotic merchant - market relationship. At least it seemed like a good idea over beer at the Reno WAML meeting last Fall; and it seems like an even better idea now.

However, we are having trouble with library reading equipment being able to pick up the topographic detail from these fiche. Bill has a \$1,200 reader that can do it; I'm sure because he hauled it down from Santa Barbara to show me and will, I trust, try to repeat the demonstration for our Spring meeting in Pasadena. Still, it would be nice to know of any and all equipment able to pick up the detail on the sample fiche. **Would you take a moment to try reading it on the best viewer you can find;** then let me know your qualitative evaluation?

The future viability of this program may well hinge on the common effort to discover library equipment capable of optical rigors this fiche demands; the alternatives, believe me, are going to cost at least double, with no merchant prince to underwrite the expense.

Evaluation of sample Chile fiche  
[inserted at back of this issue]

Reader used [brand/model]:

[circle appropriate answers]

<u>Magnification:</u> ca. 24X	45/48X	other
<u>Legibility:</u>	good	fair      poor

Copy and return to Larry Cruse for use at April 21 WAML meeting (C-075P, Library, UCSD, La Jolla, CA 92093), or phone (619 / 534-1248).

[NOTE:] The sample fiche sent with this issue of the *Information Bulletin* was inadvertently mislabeled Vol. 10, No. 2, which should, of course, read Vol. 19, No. 2. We hope the date of issue, March 1988, will provide a clue adequate for serials collators to return it to its rightful place if it should fall on the binding-room floor.]

Color Microfiche for Large Topographic Map Sets  
by Bill Hunt

Pacific Travellers Supply/Map Link buys intermediate and large-scale topographic map series for the world. We place orders to national mapping agencies, acquiring sets for Europe, Oceania, and Japan. The Third World, particularly Latin America and Africa, cannot be ordered directly. Many mapping agencies are slow to respond to inquiries, have difficulties making international shipments, and often cannot be trusted to ship an order after receiving payment. Purchasing maps from Latin America and Africa requires patience and different business practices than European vendors.

Our firm utilizes agents and contacts in many Third World countries. Sometimes, we travel to a country to buy the products we need. I spent a month in Brazil buying 1:100,000 and 1:250,000 scale mapping. Our employee, Aaron Maizlish, flew to Kenya to buy a set of topos at 1:50,000. Most of our agents in Latin America are academics travelling in Central and South America for pleasure or research.

It is difficult to purchase maps from Third World nations. We face lengthy delays, expensive flights, corrupt officials, and bureaucratic restrictions. In many cases we are able to purchase only one set of mapping for a country. In other cases we may purchase as many sets as we like, but often the sets are very expensive.

It is risky for us to buy a topographic map set of a country when the retail price for the set is five, ten, or twenty thousand dollars. Few libraries have the resources to raise that capital for mapping. But it is also risky to travel to a distant nation and not find material to purchase; it takes a large capital investment to travel to the Third World. We may spend a substantial sum on salaries and flights and find that the material we search for is restricted, out of print, or otherwise unavailable.

To lessen the inherent risks in our business, we approached librarians in WAML for advice. Could they help us by guaranteeing our sale of at least one set of the material that we purchase? That would be a start. But two problems seemed unsolvable — the high cost of some map series and our limited ability to get multiple sets for certain series. Larry Cruse recommended color microfiche as a method for reducing the cost of the information to libraries and increasing the distribution of one-of-a-kind map sets.

Our first experiment with color microfiche, a set of 110 fiche with all current Chile 1:50,000 topographic maps, illustrates the advantages of microfilm. We obtained only one set from Chile at considerable expense: few libraries could afford the \$7,000 price tag for the 1,045 sheets. The microfilm, however, is available for \$600. The huge cost savings [57¢ per map image as compared with \$6.70 per paper map] allows many more libraries to acquire the set of information. Also, the set is complete: every Chilean map currently in print has been filmed. That protects the information from loss due to customer use or misuse.

From a commercial viewpoint, microfiche have sev-

eral advantages over paper products. The heavy cost of inventory is eliminated in the micropublishing industry; a duplicate fiche set can be produced quickly upon request. Instead of spending tens of thousands of dollars to have paper maps in stock for libraries, we can produce one master set of microfilm and duplicate it when needed. This is particularly useful when we are unable to purchase a set of mapping in response to a library order. Some series are available only after years of negotiations or as a result of a fortunate circumstance and unlikely to be repeated.

Color microfilm has advantages for the libraries as well. Film storage requires far less space or expense than paper storage. Film lasts far longer than paper — current estimates for the Cibachrome film we use suggest no loss of color quality for hundreds of years. Individual fiche can be easily replaced if lost, and we can publish future fiche to fit within an earlier set. Also, the quality is high. Current technology reproduces the color on published maps so accurately that it is difficult to see any difference between the original color and the film copy. Every word on the maps is clear and easy to read, so there is no loss of information in color microfilming.

The biggest disadvantage of microfilm is the media itself. Library patrons often prefer to use original published material instead of microfiche. Patrons sometimes need paper copies of maps to take away from the library collection for use in research or reports. Color copying from microfiche is still in its infancy, but it results in better quality than copying from paper originals. Color copying from microfiche is possible on the Canon Color Laser Copier, available in most metropolitan areas in the U.S., but the largest format available is 11" x 17". Several manufacturers are currently designing color copiers that will print larger format material.

We believe the advantages of microfiche for sets of large-scale topographic mapping far outweigh the disadvantages. The cost savings, archive value, and high quality combine to make micropublishing an attractive alternative. Microfiche allows us to distribute information that would not be available otherwise, since we can only obtain one original copy for much of the mapping we acquire.

#### Chile Fiche Specifications

COLOR; High resolution Cibachrome film. Unlike Kodak films, this is a positive film and does not

require an intermediate step in production. Since the film is only one generation away from the original, it retains greater detail. Also, the Cibachrome film has twice the resolution of the best competing color microfilm.

**REDUCTION:** Images are reduced 24 times from the original.

**FORMAT:** The 1,049 images are arranged geographically. Beginning with the northeast corner of Chile, the fiche area arranged in rows from north to south. Each fiche holds ten images, although there are fewer when a fiche records oversize sheets.

**INDEX:** Each map is indexed to the fiche by sheet number. This computer printout also records information about the map situation date, latitude and longitude and sheet name. A graphic index of the Chilean topographic maps is included as well. Each fiche is identified by sheet number for quick reference and easy storage.

**DATE:** The set includes every Chilean topographic map published at 1:50,000 scale available during the Summer of 1987 in Chile.

**ADDITIONS:** Future additions to the series will be microfilmed and placed on fiche so they can be inserted into the set geographically. A revised sheet or a single new map will have a fiche card entirely to itself; blocks of new maps will be formatted ten to each fiche to save cost when it will not interrupt the geographical arrangement of the set.

**HEADER:** The header on each fiche identifies the geographical location of the maps on that fiche using sheet numbers.

**NUMBER OF FICHE:** 110 map fiche and 2 index fiche.

**SAMPLE FICHE:** The sample fiche [inserted with this issue] is designed to reveal the versatility of the set, showing various landforms, colors, and land uses of Chile. The sample fiche is not one of the standard fiche from the Chile set.

**PRICE:** \$600.00 per set.  
The set is Copyrighted 1988.

## CHILEAN TOPOGRAPHIC MAPS, 1:50,000 Explanatory Text

The list of Chilean topographic maps includes five columns of information:

### SHEET NUMBER

The Chilean government uses a numbering system for 1:50,000 scale mapping. From north to south Chile is divided into 12 regions. The first two digits of the sheet number lists the region. The next four digits list the specific maps within each region. The sheets are numbered from east to west within each row and the rows proceed from north to south.

### SHEET NAME

Only maps available in the microfilm set are named. The absence of a name indicates that the sheet is either not available from the Chilean government (i.e., near a border) or not yet published (e.g., much of Southern Chile). Oversized sheets are indicated by an asterisk before the sheet name.

### LATITUDE AND LONGITUDE

Except for oversized sheets, each map covers 15 minutes of latitude and 15 minutes of longitude. The maps are identified by the northeast corner of the sheet. The latitude reading is always south; the longitude reading is always west of Greenwich.

### DATE

The information for the date was taken directly from the maps themselves. We have used the situation date whenever possible. All maps are first editions unless there is a hyphenated date, which indicates both the first edition date followed by the revision date. The dates are two digits; every map was published between 1960 and 1986. N/A indicates that the date information is not available and the maps are not in this microfiche set.

### FICHE

Each map is located on the fiche numbered in this column. The maps are arranged in exactly the same order as the Chilean sheet numbers. The fiche are arranged from north to south.

MAP LINK, 529 State Street, Santa Barbara, CA  
93101 Telephone (805) 963-4438

De Zee-Atlas Ofte Water-Waereld of 1659

Canberra: National Library of Australia, 1987. (ISBN 0 642 10421 2). Copies of this pioneering first set can be ordered direct, postpaid from Sales and Subscriptions Section, National Library of Australia, Canberra, ACT 2600, Australia.

Is there a way to do justice to this publishing effort of the Australian National Library in sharing their unique copy of this atlas with the rest of the world? Even a short description of the "published" product will probably fall short. What you receive for A\$100 (ca. U.S.\$70) is a small brochure roughly 8.5-inches tall and 6-inches wide with the atlas's cover page printed in color. This is followed by the CIP information, as with a book facsimile, then a four page preface on the uniqueness of the ANL's copy, followed by nine pages of introductory material, then a plate-by-plate description of the atlas's contents — 21 map sheets featuring all of the 1659 world's areas of exploratory interest, including a world map by N. Visscher — and finally a fold-out backcover concealing four hand-laid microfiche envelopes, each containing one color fiche of six images bonded inside a transparent sleeve. Every element of the "package" reflects credit on Linda Muldoon, who designed it, and everyone else associated with the decision to produce it. Probably, we should thank as well those (inevitably) whose critiques, criticisms, objections, and fulminations drove the production staff to overcome, mollify and appease them to the benefit of everyone who gets a chance to see how good a microfiche production can be (look for it on display at the Spring 1988 WAML meeting in Pasadena).

As is their nature, the microfiche are themselves always anticlimactic. When you are not paying for something, you invariably wish it was oversize, with the plates photographed by Harry Margary, hand colored by Olwen Caradoc Evans and signed individually by all hands. Instead, of course, you confront these technically perfect, machine produced slivers of film with transparent, almost colorless images. And you know, in your heart, that utilitarian little microfiche viewer no one wants even to keep dusted, the one with the deep blue screen that was indifferently assigned to your department, is never going to adequately project these images. Console yourself with the hope that some day there will be enough fiche like this around that some administrator will spring for the \$1,000 a decent one costs — not for your sake but to placate that faculty hothead you bribed to go desk pounding over in library administration; this fiche is worth it, you deserve better,

your academic coconspirator will form some useful bonds in the front office, your culpability will be avenged and everyone will someday marvel at your technological prescience. Go for it, then enjoy the treat of "Big Screen" color-corrected microfiche-vision! What better place to prove the false economy of a \$250 - \$500 limited-edition volume you must secure with padlocks in a darkened alcove than with this (relatively) inexpensive, near perfect, compact, untheftworthy little speedboat edition of a priceless original, perfectly rendered in a utilitarian format, viewable by one or projected for many in glorious, indestructible Cibachrome color fiche. I'm sure because my test sample from another set has been on a window for 16 months and is still color fast. Cibachrome is also being used by both the National Archives of Canada and Bibliotheque Nationale for their map preservation programs, and this whole system is reputedly under investigation by at least one other major national map collection.

Produced on Cameronic[s] [i.e., Fiche2000] innovative new camera, the fiche state-of-the-art for inexpensive, high production. While the camera in the business does not necessarily have the best lens (according to authoritative rivals), this product will easily exceed the resolution of library blowback equipment.

If successful with the project, we may see other, similar projects based on color microfilm preservation programs at major institutions by marketing their own products and cycling the profits back into a self-sustaining program.

Equipment Update: — Microfiche ReadersThe Pacific Travellers Supply "Signature Model" Color Fiche Reader

The preceding allusions to the demonstration of a newly available, color-balanced, high definition microfiche reader, retailing for \$1,200 from Bill Hunt, convinced me that we do in fact need viewers of this caliber. Also, \$1,200 is not so much as it once was, considering in the case of topographic mapping that the net savings of just one map set like the Chile fiche would pay for it three times over, would unlock a treasure house of possibilities for other sets of this kind, including those from preservation programs at national libraries, and put to rest one of the medium's major drawbacks ... crummy images.



**Harvester Portable Solar Power**

In similar fashion, an effort to resolve the problem of field use has lead the missionary technical support group ILS/Harvester to develop a prototype unit which may be of interest to map librarians. Literally a briefcase unit — with solar panels on one face, the Harvester is apparently capable of direct use in daylight and stored power use at night. It also incorporates a portable tape recorder for field notes, and, at last report, was planned to add a laptop computer in the near future. It is beautifully thought-out combination of components, all self-contained with some very attractive potential in view of the microfiche topographic sets it would help utilize. The accompanying illustration is pretty self explanatory, and the proposed price is on the order of \$700.

[For information contact: ILS / Harvester Project, P.O. Box 806, Apple Valley, CA 92307, ATTN: Marvin Bowers.]

**In Embryo**

An item appeared in Britain's *Information Media & Technology* (Vol. 21, 1, January 1988) describing a prototype Microfilm Reader/Tracer Table being proposed by Microfilm Supplies and Services of Ireland which is clearly designed with map libraries in mind. They are showing it at trade shows, and field testing the A1 size projector table at a London mapping works.

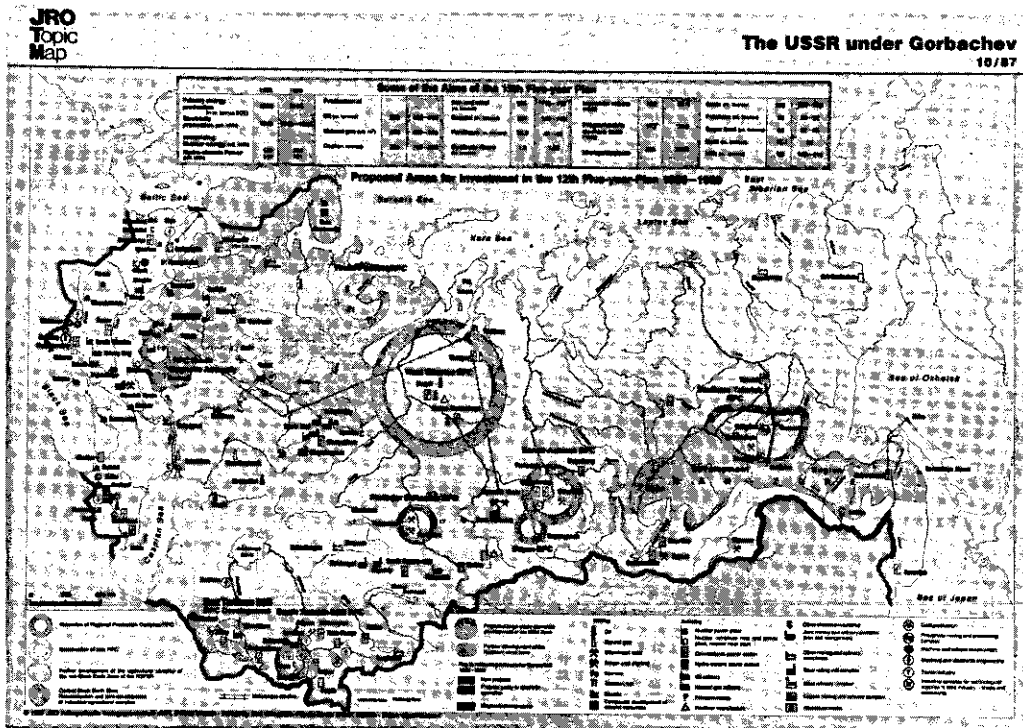
**Color Copies**

The same issue of *IMT* carries a review of Canon's new 'color laser copier' which is a technical tour-de-force using three color charge-coupled-device scanning in conjunction with an intelligent processor, and represents a qualitative improvement over currently available equivalents. Consistent with its predecessors, it has an optional slide projector, making for tempting speculation on its ability to color copy from microfiche. This very competitive industry, with this unit, comes tantalizingly close to the multiple analog and digital input, intelligent processor output color copier everyone knows we will need but no one has quite yet produced.

**Camera Angles**

Finally, if you have plans to do any preservation microfilming of maps and cannot find large-format camera services, the Mid-Atlantic Preservation Service announced in a recent newsletter they had acquired a Kodak MRG-1. To get on their mailing list, and to learn more about their NEH-subsidized preservation services, contact MAPS, Lehigh University, Mountaintop Campus, 118 Research Drive, Bldg. J, Room 120, Bethlehem, PA 18015, Tel.: 215/758-5390. They are also evaluating high quality viewing equipment, such as Northwest Microfilm's 2020A 35mm roll film, hand crank reader, the only one I have ever seen with the option of a true continuous focus zoom lens (it is particularly good for air photos and color roll films).

Sample JRO Topic Map [see p. 93 for information]



## New Publications

### Figurative Mapping

A quantitative map of Napoleon's Grande Armée losses in 1812 from Poland to Moscow and back again is available as a two color poster for \$10 postpaid from Graphics Press, Box 430, Cheshire, CT 06410.

### North America - Thematic Tectonic Maps

1. Tectonic elements
2. Time of last formation
3. Time of first deformation
4. Miogeoclines and terranes
5. Suture zones and terrane boundaries
6. Time of accretion

All compatible, colour postcard format. Taken from compilations by Harold Williams, Paul Hoffman, John Lewry, Jim Monger, and Toby Rivers. Cartography by Memorial University Cartography Laboratory.

Set of six cards: Prepay — \$5.00 Canadian to: "Appalachian Research Fund"

Available from: H. Williams  
Department of Earth Sciences  
Memorial University of Newfoundland  
St. John's, NF, Canada A1B 3X5

### Depository Items (newly available)

SuDocs Survey 87-013.

1.) DMA Annual Report. (Microfiche). Class No. D5.301:[year]. Item no. 0379-A-11 (ask your Docs librarian to explain the importance of this inventory control).

"Summarizes activities of DMA and gives its accomplishments in terms of products produced. Reports are expected to contain black and white photographs, tables, and graphs, and to consist of about 20 pages or 1 fiche."

2.) Nautical Ocean Service maps and charts (paper). Class no. C55.418/6: [ct?]. Item 0191-B-11

"Includes miscellaneous maps and charts on various topics pertaining to the work of the Service. The number and size of maps and charts to be issued per year cannot be predicted."

3.) National Ocean Service recreational charts. Class no. C55.418/5: [ct?] Item 0191-B-12.

"Each recreational chart will deal with a different waterway, one for example, in Michigan and another in Wisconsin. Charts are expected to be colored, to measure 28 x 42 cm., and to contain about 20 to 40 pages. Frequency cannot be predicted."

Wolman, Baron. **Above the Holy Land.** San Francisco: Chronicle Books, n.d. 150 air photos.

### New Serial

ALRIS, a quarterly newsletter of the Arizona State Land Department, in cooperation with the Arizona Mapping Advisory Committee. Contact Arizona Land Resource Information System, State Land Department, 1624 West Adams, Phoenix, AZ 85007.

Emlen, Robert P. **Shaker village views.** Hanover, NH: University Press of New England, 1987.

Illustrated maps and landscape drawings of the Nineteenth Century.

### Mapping of Russia

Current inventory of maps published by the American Historical Society of Germans from Russia, 631 D Street, Lincoln, Nebraska 68502-1199.

Maps are about \$4 - \$5 each. Also available are numerous histories, lexicons, dictionaries and guides. Publications catalog (\$5) is well worth the investment.

[selection of maps available:]

1. Map of German Settlements in the Area of Odessa
2. Map of German Settlements in Bessarabien
3. Map of German Settlements in Ukrain-Wolhynien
4. The German colonies on the Volga
5. Countries of Origin, Migration Routes and Areas of Settlement (1763-1861) of the Volga and Black Sea Germans in the Mother Colonies
6. Map of German Settlements in the Volga Territory
7. Maps of Hessen with the Cities out of which the Germans of the Volga Territory Migrated (1763-1769)

8. Map of Russian-German Settlements in South America
9. The German Settlements on the Peninsula of Krim
10. Russian-German Settlements in Canada
11. Map of German Settlements in the Territory of Alt-Samara, Ufa-Dawledanowo, Orenburg, Neu-Samara and Aktjubinsk
12. Map of Previous and Contemporary Settlements of Germans in the Soviet Union
13. Map of German Settlements in the Northern and Southern Caucasus
14. Map of Russian-German Settlements in the USA and Mexico
15. "Special" Map out of the Migrations map of Wurttemberg covering the Areas of: ....
16. Map of Settlements in Danzig-WestpreuBen, out of which the Menonites, in the years between 1789-1807, migrated to Russia
17. Map of Frank Russia about 1900
18. Map of Wurttemberg, Baden, Pfalz and ElsaB, with the cities out of which the Black Sea-Germans migrated (1804-1842)
19. Village of Straub, Russia (1891)
20. Hussenbach
21. The German Settlement Area in Polish-Wolhynien
22. Map of German Settlements in the Soviet Union After the 1959 Census for the Area of Rayone with many Russian-Germans and 1969 for the Republics and Oblastji.
23. Linguistic Map of the Volga German Mother Colonies
24. Cities out of which, in the year 1814, Migrations to Russia, particularly to Bessarabien occurred.
25. North Kolb 1921
26. Map of German Settlements in the Area of Saporo-shje
27. Map of German Settlements in the Area of Dnjeppetrowsk
28. Map of German Settlements in the Area of Nikolajew
29. Map of German Settlements in the Area Stalino
30. Map of German Settlements in the Area Rostow
31. Map of German Settlements in new (South) Russia
32. Map of the Independent Areas of the Volga Territory

**Cartomania: Newsletter of the Association of Map Memorabilia Collectors** published/edited by Siegfried Feller, 8 Amherst Road, Pelham, MA 01002 USA [telephone 413/253-3115] ISSN 0894-2595. AMMC annual memberships: \$8 USA, \$10 foreign (incl. 4 issues of *Cartomania*; single copies \$2.50 US, \$3 foreign.

"MAPS THEMSELVES — & in a variety of other forms: postcards greeting cards, envelopes & cachets, stamps & souvenir sheets, pictorial postmarks, postal stationery, publicity labels (YOU name it!)"

Issue No. 6 was Summer 1987. Includes essays on the topics itemized above: e.g., "From the viewpoint of a collector of map postcards", by Anne P. Valsing; "Dell Mapbacks", by Laurence M. Feldman. Exchange publications are described.

#### JRO Topical Wall Maps

[see sample on page 91]

JRO has been publishing a German series of topical wall and desk maps for at least twelve years (according to a [ca.1976] catalog they sent us back then.)

Since about 1981 these have been published in an English version done under the direction of Frank Preiss of European Schoolbooks. Quite popular in junior and senior high schools. Colleges which disdained such graphic aids throughout the 1960s and 70s might find these useful as they scramble to make amends.

Sold by subscription year in groups of 10, in backfile groupings by area/and theme, or individually, each "issue" contains a 33" x 47" wall map and a 16" x 12" desk version which, if nothing else, make eye-catching displays for the map collection; the smaller version is about ideal for students to photocopy. At \$8.50 per map they certainly appear to represent good value, and over a longer period than one might otherwise expect (see backfile list accompanying this notice).

Prospective buyers should be aware, however, that three caveats can be associated with the maps: on the large maps the lithographic screens are apparent (some might say daunting) on close inspection, which should not be a material drawback for their intended venue, large gatherings, lectures and the like; also, the maps are printed on a semi-gloss paper which can make them appear more durable than they are in fact; finally, they arrive folded. To last, the

large maps should be stored flat; the "desk" versions might survive folded within an archival tape protector of suitable dimensions. For use in lectures, we have ordered a batch of large, clear vinyl envelopes intended to protect maps for field use. The grommeted type will protect these and similar products, such as CIA political maps. Further, we plan to offer suitable marking pens so lecturers can annotate them freely without damage. When returned, the map will be pulled and refiled, the vinyl pouch cleaned and readied for its next assignment. The desk maps, meanwhile, will remain in the department ready-reference collection, in binders near the Facts on File and small CIA maps, for photocopying.

If you need wall maps with a judicious balance of content and clarity, timeliness and value, this series ranks superior to anything else on the market, its shortcomings appear surmountable and its appeal to humanities/social science faculty pretty universal.

The maps are currently being distributed in the U.S. by the George F. Cram Co., P.O. Box 426, Indianapolis, Indiana 46206, tel.: 317/635-5564, or 1-800-227-4199; ask for Karen Finnigen, she'll give you one free for each 10 ordered.

#### List of available units

1984

- 1/84 Problems of Soviet Agriculture
- 2/84 The Debts of the Third World
- 3/84 Japan - An Economic Giant
- 4/84 Agriculture in the USA
- 5/84 The Continuing Crisis in Central America
- 6/84 USA - Mineral Deposits and Energy
- 7/84 The Middle East Crisis
- 8/84 Industry in the USA
- 9/84 Soviet Union - Natural Resources / Energy
- 10/84 Southern Africa

1985

- 1/85 Industry in the Soviet Union
- 2/85 Armament & Economy in Third World
- 3/85 Third World-Population Growth/Poverty
- 4/85 Black Africa in Crisis
- 5/85 Another Look at Latin America
- 6/85 US & USSR-their economies compared
- 7/85 Europe of 12-Data on Economic Structure
- 8/85 The Changing Face of Canada
- 9/85 Crises in the Third World
- 10/85 COMECON - Economic Structure

1986

- 1/86 Regional Inequality within the EEC
- 2/86 EEC - Agriculture
- 3/86 Are we Tampering with the Climate?

- 4/86 Africa - Diversity and Division
- 5/86 Environment in Danger: Forests of Earth
- 6/86 Debt - The Cancer of the Third World
- 7/86 Fresh Water Crisis-Today & Year 2000
- 8/86 Asia - a Region in Change
- 9/86 China today and in the year 2000
- 10/86 Nuclear Energy and Radioactivity
- 1987
- 1/87 Oil & the US dollar in world economy
- 2/87 NORTH-SOUTH Divide & Consequences
- 3/87 The force of nature - earth quakes
- 4/87 World crisis: the world's trouble spots
- 5/87 World's Agricultural Resources
- 6/87 War in the Persian Gulf
- 7/87 Philippines-problems facing devel. country
- 8/87 Eastern Europe in the mid-eighties
- 9/87 The European Community: Energy
- 10/87 The USSR under Gorbachev
- 1988
- 1/88 The plight of the giant city
- 2/88 The earth's endangered ozone layer
- 3/88 Focal points in world affairs

[ISBN 0-85048-870-2 - ISSN 0177-5634]

#### 1:250,000 UNIFIED HEMISPHERIC MAPPING SERIES / MAPA HEMISFERICO UNIFICADO

News from Brazil has been a long time coming, but Robert L. Senter, Coordinator of the project, has announced that the Instituto Brasileiro De Geografia Estatistica (IBGE) has finally received authorization to participate in the PAIGH Unified Hemispheric Mapping Program.

The Pan American Institute of Geography and History [PAIGH], Commission on Cartography, has had this essential program operating for several years and the participants have been slowly but surely joining the program.

Mr. Senter reports in *Newsletter #15* that "since the last newsletter, the Hemispheric Mapping Program has distributed thirty-four (34) PAIGH maps from the following (4) four countries: Argentina 1, Chile 25, Costa Rica 1, and Peru 7 remaining LANDSAT sheets. This is a grand total of three hundred twenty-five (325) hemispheric maps that have been distributed from the DMA [Defense Mapping Agency] Distribution Depot, Clearfield, Utah.

"In a meeting with the IBGE in Rio de Janeiro, Brazil, I discussed the production of the program for 1988.

The IBGE has initiated production with ten (10) new map sheets and the Chief, Department of Cartography, stated he preferred to select twenty (20) more map sheets as soon as the first group is completed and then an additional twenty (20) when the second group is completed, for a total of fifty (50). I understand the IBGE doesn't want to have too many PAIGH sheets waiting for publication at any one time.

"In response to subscribers' questions about anticipated production for 1988, my personal prediction for calendar year 1988 is eighty-nine (89) PAIGH maps from the following ten (10) countries: Argentina 4, Bolivia 7, Brazil 50, Chile 13, Colombia 2, Ecuador 2, Panama 1, Peru 5, Uruguay 3, and Venezuela 2."

Inquiries to: Robert L. Senter  
PAIGH Coordinator  
DMAIAGS, Bldg. 144  
Ft. San Houston, TX 78234  
(512/221-5058 or 5426)

---

### Library of Congress Geography & Map Division 34th Special Project

Dr. John Wolter, Chief of the Geography and Map Division, Library of Congress, has announced that The Division will hold its 34th Special Project during the summer of 1988. As in recent years, the 1988 Project is limited to "cooperative participants."

University and college libraries and geography departments, and public and research libraries have been invited to participate. The Division will accept librarians, faculty, or students as cooperative participants. Sponsoring institutions are responsible for salaries and transportation costs of participants. Project members work with permanent staff members of The Division on various tasks related to technical processing, bibliographic control, and reference services.

In exchange for the participants' service they select, from surplus-duplicate maps, charts, and atlases. A participant may select up to 1,000 maps (or their equivalent in atlases) for each week of participation for transmittal to their sponsoring institution.

The six-week, 1988 Project dates are Tuesday, July 5 to Friday, August 12. Dr. Wolter stated that "for

maximum benefits to [the] institution and [its] representative, we encourage participation for the full six-week period." Project members are expected to report at 9:00 a.m. on July 5th in Room B02 of the James Madison Memorial Building, Library of Congress, 1st and Independence S.E., Washington, D.C. 20540.

In recent years the number of applicants for this summer map-processing Project have far exceeded the number of participants who could be accommodated.

One of the objectives of this Project is to process quantities of non-current maps, charts, and atlases received by transfer-disposal from other U.S. Federal agencies. Providing professional and clerical assistance to permanent members of the staff is also an important objective.

Although Projects are not designed as workshops or training sessions, participants benefit from experience gained by working in a large map library with highly qualified professionals. A series of lectures by senior staff members deal with specialized aspects of map librarianship and introduce participants to distinctive segments of the cartographic collections.

To assist The Division in making selections from among the applicants, and assigning tasks during the six-week Project, a questionnaire solicits background information about each applicant: Education and Degree(s), Chief Undergraduate and Graduate Studies, Foreign Languages (including reading ability level), Library Work Experience, Map Experience (applied cartography, map making, map use study), and Typing skills.

[Dr. Wolter's announcement was issued in mid-February, 1988.]

---

### Milestones

Richard W. Stephenson, Associate Member of WAML and Head of Reference and Bibliography at the Library of Congress Geography & Map Division, has been named "specialist in American cartographic history", the first such position at the Library of Congress.

---

L. S. Straight, the noted antiquarian mapseller, and Associate Member of WAML, has announced the sale

of his business. The new owner is Louis W. Andreatta who has continued the association with WAML. Mr. Straight remains with the new firm as consultant and chief cataloguer.

In announcing the change in ownership, Mr. Straight recalled the differences that have taken place in map collecting since he began more than twenty-five years ago: "When I mailed out my first catalogue in October, 1960, there were only five or six of us map dealers in the entire country; today, map collecting has become so popular that there are now entire directories of mapsellers. I'm pleased to have played a small part in this astonishing expansion of interest."

The business address of the new firm is 803 27th Street, Union City, New Jersey 07087; the phone remains (201) 863-9115. "We will operate, as in the past, by mail order only, issuing catalogues three or four times a year. The next catalogue," according to Straight, "will appear in midsummer and contain a variety of maps, plans, charts and views of American interest."

"I want to take this opportunity," Straight added, "to thank the many people and institutions who have favored me with their orders in the past; I hope that we can continue — through this new business arrangement — to enjoy this pleasant and mutually beneficial relationship."

---

A most enlightening article on W. Graham Arader III by Mark Singer appeared in *The New Yorker*, November 30, 1987 [Vol. 63, No. 41] pp. 44-97.

Arader, an Associate Member of WAML, is a capitalist whose profile certainly drew nationwide attention and comment.

---

### Northeast Map-Users Organization (NEMO)

Inaugural Meeting  
October 7, 1987  
Storrs, CT

The Northeast Map-Users Organization (NEMO) held its first meeting on Wednesday, October 7, 1987, on the Storrs Campus of the University of Connecticut in conjunction with the Northeast NCIC State Affiliates' Fall Meeting.

The organizers of this meeting, Jenny Marie Johnson (Clark University), Patrick McGlamery (University of Connecticut), and Jim Walsh (Tufts University), hoped to appeal to a wide cross-section of map/cartographic materials users and providers. Among the 34 in attendance were map librarians, cartographers, map retailers and publishers, and geographers from seven states. NEMO's broad goal, as a cooperative organization of cartographic information users and purveyors, is to serve as a regional unifying body through increased knowledge and communication.

Most of the meeting's participants arrived at the university's Homer Babbidge Library in time to enjoy coffee and danish and meet old acquaintances and begin new ones before the morning's first speaker.

Norman Stevens, University Librarian, welcomed the attendees and wished them well in their organizational endeavors. Robert Lees, from SPOT Image in Reston, Virginia, presented background information on SPOT's history, current capabilities, and future developments. This informative presentation was accompanied by slides and an experimental map issue from the U.S. Geological Survey which compared SPOT products and capabilities with those of Federal programs (USGS Miscellaneous Investigation Series Map I-1941).

To complete the morning's activities, tours were arranged for participants to visit the Map Library and the Department of Geography's Spatial Analysis Laboratory. Pat McGlamery welcomed participants to the Map Library, located on the fourth floor of the Homer Babbidge Library with a panoramic view of the campus and Connecticut countryside. Mr. McGlamery explained how a cooperative effort such as NEMO would enhance his ability to fill cartographic needs within the state of Connecticut and displayed a large number of items from the map collection for inspection by participants. At the Spatial Analysis Laboratory, Robert Cromly demonstrated some of the university's capacity for computer assisted cartography with a display of a set of demographic statistics for Connecticut primary-grade aged children.

David Cobb gave the day's keynote speech after lunch. Mr. Cobb is the Map and Geography Librarian at the University of Illinois at Urbana-Champaign and the Illinois State NCIC Affiliate. A native of Vermont, Mr. Cobb's research endeavors include pre-1900 cartobibliographies for New Hampshire

and Vermont and, most recently, he served as editor for *Guide to U.S. Map Resources*, published by the American Library Association.

As the keynote speaker, Mr. Cobb spoke from the experiences of being a founding member of the Cartographic Users Advisory Council and ALA's Map and Geography Round Table (MAGERT). He presented a brief history of map organizations in the United States and map resources located in the Northeast. David concluded his speech by expanding upon ideas for NEMO's formation and the opportunities and benefits that exist in the Northeast for such an organization to be successful and have an impact on the region's map community.

The keynote speech was well received and served as the basis for a lively and informative discussion about what lies ahead for NEMO and how NEMO should proceed. During this discussion period, "Information Fact Sheets" were distributed and completed to form the base of a mailing list and to identify and create various planning committees within NEMO.

Those wishing more information about NEMO may contact: Jim Walsh, Government Publications and Map Librarian, Wessell Library, Tufts University, Medford, MA 02155 — phone 617-381-3087 or 617-628-5000, ext. 5234.

[Notes compiled by Jenny Marie Johnson]

### Trading Post

#### Available to WAML Institutions

Michael Swift, Map Curator at the Department of Geography, California State University — Northridge, is offering a copy of the following map to WAML Institutions and Libraries:

Hanzel, Greg, and Keith Ryden  
**California Population and Ethnic Distribution.**  
 Northridge, CA : California State University, Northridge?, ©1986.  
 3 maps, col., on one sheet ca.45" x 31"  
 Map of California @ 1:1,267,200; maps of San Francisco Bay Region, and Southern California Region @ ca.1:650,000.

The map of California depicts the 1980 population, the two regional maps depict Ethnic Distribution. On

a blue-nighttime background, dots of three different colors (yellow for 100 persons per dot, pink for 1,000 persons per dot, and red for 2,500 per dot) represent population values while at the same time they represent density of persons per square mile (10, 100, and 1,000 persons respectively by yellow, pink, red dots). The authors include the following statement in the legend: "The California Population Map has been compiled from data in the 1980 Census Bureau Master Area Reference File (MARF2). The MARF2 file contains population and locational data for all levels of Census geography for each state or state equivalent. Thiessen Polygons were constructed around tract centroids to form the basis for a spatial database. Land use was digitized from 1:250,000 topographic sheets and overlaid on the Thiessen Polygons. A weighting model was used to adjust population values where land use changed across a tract. Data was processed using the ARC/INFO Geographic Information System."

Data for the Ethnic Distribution maps is restricted to the three Census racial categories: Asian, Black, Hispanic. These values are depicted by Yellow for Asian, Blue for Black, and Pink for Hispanic. One dot represents 100 persons.

Institutions who wish a copy for their map collection may write on letterhead to:

Michael Swift, Map Curator  
 Department of Geography  
 California State University, Northridge  
 18111 Nordhoff Street  
 NORTHRIDGE, CA 91330

#### Wanted

"We are in need of Volumes I and II of the following:

**Index to Names on AMS 1:250,000 Maps of Eastern Europe (Series N501).** Washington : Army Map Service, 1966.

If you have a set available please contact:

Helen Clarke  
 Maps and Air Photos  
 Environment-Science-Technology Library  
 University of Calgary  
 Calgary, Alta. T2N 1N4  
 Telephone: (403) 220-5969

Thank you for your assistance."

Needs

"WANTED - A Raised Relief Map of Pennsylvania.

A department on the University Park Campus is very anxious to secure a raised relief map of Pennsylvania for a permanent exhibition. They have not been able to buy a new one. "Seems stocks are depleted and this is not a "hot enough" item to have a new reproduction date. Any offers should be sent to Karl H. Proehl or Amelia S. Harding, Pattee Library, The Pennsylvania State University, University Park, PA 16802 or telephone (814) 863-0094."

[from: New Acquisitions/Cartographic Notes, July - December 1987 of the Pennsylvania State University Libraries.]

Available

The following are available free from:

Map Collection, University Library, University of California, Davis, CA 95616. Preference will be given to those supplying return mailing labels. No phone calls please.

The World (sheet 5) scale not given 1960?

Map showing groundwater conditions in the West Salt River, East Salt River, Lake Pleasant, Carefree, and Fountain Hills; sub-basins of the Phoenix Active Management Area. sc. var. 1986

California 1:350K 1965?

1986 Retail map of the United States sc. ? 1986

Bundesrepublik Deutschland  
Sudwest und Nordwest (2 sht) 500K 1978

Republic of Botswana 1981 Population Census  
1:1,500K 1981

Colorado 1:120K c.1887 repr. 1970

Africa 1:2,000,000 Addis Ababa; Monrovia. 1967

Tahoe National Forest 1:150K 1962

London Big Ben Map 1:24K 1975?

Van Buren County, Iowa sc not given 1903

Lompoc, California 1:125K 1931

Land Use and Cover Map of Northeastern Illinois  
1:200K 1985

World (Asia) 1:1,000,000 Laila 1943

Kasama - Songea, Zambia 1:1,000K 1969

Mississippi Delta 1:1,000K 1951

Territorio Chileno Antartico 6000-5300 1:10,000K  
1972

Asia 1:1,000,000 Irrawaddy; Assam; Tali; Andaman  
Islands; Bangkok (Krung Thep); Port Blair; Isthmus  
of Kra. 1979

Soil map of Rutherford County, Tennessee 1:35K  
1968

Great Salt Lake and Vicinity, Utah 1:125K 1979

Territorial Evolution of Canada sc not given 1969

Karte Aktuellen Vegetation Tirols 1:100K 1984

Stanislaus National Forest, California: (north and  
south sheets) sc not given 1916

Le Vins du Loire 1:500K 1969

Le Cote du Rhone: Carte Publiee parla revue du  
Vin de France 1:250K 1980

Le Cotes des Provence, Carte par le revue du Vin  
de France 1:250K 1980

Le Vins de Bordeaux, Saint Emilon 1:43K 1980

Le Vins de Bourgogne, Chablis 1:50K 1980

Le Vins de Bordeaux, Graves, Graves Superievr  
1:50K 1980

The United States, 1980 distribution of popula-  
tion 1:5,000K 1980

Amador County, California, Road System (set of  
7) 1:170K 1985

Alabama Highway Map 1:800K 1984

Tourist Map of Beijing sc not given 1979



Tourist Route Map of Britain 1:570,240 1982

Rochester, New York, and vicinity. 1:30K 1978

Highway Map of Canada and Northern United States 1:3,000K 1967

Eastern Sierra - Recreation Map 1:190K 1967

### Remaindered

#### Special Libraries Association Geography and Map Division

#### *Bulletin* back issues Sale!

The Geography and Map Division has announced a sale of back issues of its *Bulletin*. All existing issues will be available at the special price of \$2.50 per copy, and the sale will continue through December 31, 1988. After that date, all back issues prior to March 1982 (number 127) will be recycled, and back issues post-March 1982 will be sold at the new price of \$5.00 per copy.

During this special sale, copies of the following issues are available for purchase on a first come first served basis:

Numbers 21, 33-35, 37-38, 40, 42, 44-45, 48, 52-55, 58, 64, 69-72, 74, 76-77, 80-118, 120-122, 124-144, 146-current issue.

Some of these issues are available in very limited quantities so do not delay. Send your request to:

Mr. James Flatness, 3027 Aspen Lane, Falls Church, Virginia 22042. Do not send money. You will be billed \$2.50 per issue supplied.

### ANNOUNCEMENTS

#### Memorandum from Council of Professional Association on Federal Statistics

Earlier this year, the Association of Public Data Users (APDU) proposed the establishment of a work group to provide advice to the Bureau of the Census on the detailed design of printed and machine-readable

products that will be produced and disseminated from the 1990 Decennial Census. The APDU proposal said, in part,

'as we begin to address the specific content of individual products and move to the level of table design and content, other methods for gathering information and opinions are needed: methods that will require review of material by various segments of the data user community on a timely basis. Further, as new technology and budgetary constraints change the way Census data will be delivered, issues unique to the 1990 Census must be addressed.'

At the end of October, the Bureau of the Census accepted the proposal to establish "The APDU Working Group on Census Products." The Working Group will be coordinated by Judith Rowe from the Princeton-Rutgers Census Project (and former CO-PAFS' Chair). Membership on the Working Group is not limited to APDU members; efforts are now being made to enlist representation from all segments of the census data user community, including librarians, data vendors, state and local government analysts, etc.

In essence, the Working Group will comprise "pools" of individuals, each of which might comment on one or two products proposed for creation from the 1990 Census data. Once the list of experts has been assembled, sets of individuals who have agreed to share their expertise in specific areas will be identified. Members of the pools will donate their time to study such topics as tape files and publications, table formats, documentation, delivery media, user support, and cost effectiveness. The pools will respond directly and individually to the Census Bureau, and as a whole to the Working Group's steering committee.

As a member of the Working Group steering committee, I urge you to give this opportunity to participate in decisions about 1990 Census products your support. If you wish to be involved, please complete the information that follows and send it to the APDU office. If you know of others who might contribute, encourage them to contact Susan Anderson at APDU (609/452-6025) to obtain a sign-up card.

Yes, I am willing to make a commitment to the APDU Working Group!

[continued next page]

---

(name, title)

---

(organization)

---

(mailing address)

---

(city, state and ZIP code)

---

(phone - including area code)

INDICATE AREAS OF EXPERTISE, CHOOSING ONE ITEM IN EACH SECTION

SUBJECT MATTER

- POPULATION
  - Aging
  - Education
  - Income
  - Labor force
  - Race/ethnicity
- HOUSING
- OTHER \_\_\_\_\_

MEDIA

- CD-ROM
- Diskette
- Microfiche
- Print
- PUMS
- Summary tapes

GEOGRAPHIC AREA

- Small Area
- State and MSA
- National

GEOGRAPHIC BASE SYSTEMS

- Maps
- TIGER
- OTHER \_\_\_\_\_

---

Anyone wishing to form a WAML Advisory Committee, please contact the Editor for discussion at the Cal Tech meeting, April 21st.

---

California's Collective Relief

The 10,000-ft<sup>2</sup>, 500-foot long "Panorama of Paradise" relief map of California, first unveiled in 1924 and located at the San Francisco Ferry Building, was a staple tourist attraction until 1960, when it was sold to the City of San Francisco for \$1, a \$147,000 discount from its original cost, and about 4-tenths of a cent per 800 pound storage crate).

In 1965, Greyhound Corp. auctioned it off to the California Heritage Foundation, which later sold it to a Marin County developer. Now, the State of California is interested in its historic preservation, and has already pitched in \$30,000 of the expected \$1,500,000 needed to restore and display it at the State Fair Grounds in Sacramento. (From a McClatchy News Service item appearing in a local paper at about Christmas 1987.) — courtesy of Phil Hoehn

NAMES

Geographic Name Authority Survey

The Getty Art History Information Program in Santa Monica, California, has recently established the Vocabulary Coordination Group, a project designed to facilitate the development and use of standard lists of names and terms for art research databases. The Vocabulary Coordination Group interested in locating an international list of geographic place names in machine-readable form for use as an authority file in Getty databases. For the past few months, VCG has been gathering information on the availability of such data and has contacted approximately 90 sources, some of which include the U.S. Geological Survey, the Department of Defense Mapping, the United Nations, Times Books Limited and Rand McNally.

Following are some of the basic features VCG is seeking:

Usage of the vernacular for places and English for names of countries; cross-references to historical names with dates of geo-political activity; provision for latitude and longitude; and inclusion of regions, water bodies and mountains.

Those wishing to contact AHIP's Vocabulary Coordination Group to share or provide information on the availability of geographic place names in a fielded ASCII format, please contact:

Michelle Weller  
 Vocabulary Coordination Group  
 The Getty Art History Information Program  
 401 Wilshire Blvd. Suite 1100  
 Santa Monica, California 90401-1455  
 (213) 395-1025 x1019

### PLACE-NAME-INDEX on CD-ROM

Buckmaster Publishing [Mineral, Virginia] has announced [February 24, 1988] a new and major reference tool on CD-ROM. The PLACE-NAME-INDEX can access over one-million place names depicted on USGS quads.

Each of the 1,087,000+ records contain the same data as the USGS Geographic Names Information System, also available on fiche, printout by state, or as published volumes of the National Gazetteer of the United States of America [USGS Professional Paper 1200, and its Parts AL thru WY [Alabama — Wyoming] when issued in that form.

[The advantage of the CD-ROM product, although we have not seen the system demonstrated, should be the built in capability to search the data for a name — regardless of the State — so one could retrieve all like names from wherever and compare, eliminate some if inappropriate to the query, and proceed to the topos for an examination of the features. Presently with the USGS products, one must know in which State the named feature is located because there is no USGS integrated gazetteer for the entire U.S. — it's all State by State.]

The product is leased on an annual subscription basis, or sold outright. The disc leases for \$595/yr., sells for \$2,995. Annual updates are planned. The data contained in the product was last updated in January, 1988. [As map librarians know, many of the States have not been edited and will be a long-time comin'.]

Minimum hardware required to operate the system must include: a Hitachi, Sony or Philips CD-ROM player, an IBM compatible MS or PC DOS computer (640K, 1 floppy). TextWare software accompanies the CD-ROM disc. The disc uses the High-Sierra standard. Each system component is available separately or as a package (lease or purchase).

It is anticipated that libraries with major map collec-

tions will find this product a must for quick and convenient access to their collections. The product can be used alone as a valuable authority file for researchers and those needing place name data.

To order or inquire about the PLACE-NAME-INDEX, contact Buckmaster Publishing directly: Buckmaster Publishing, "Whitehall", Route Three, Box Fifty-Six, Mineral, Virginia 23117, phone 703/894-5777.

The system is easy to use and the search results can be printed, stored on disk, or read on the monitor. Full boolean logic is available. Many special features also come as standard - wild card searching, search term frequency inspection, and more.

The following price list and special offer are good for the next 30 days: [dated February 1988]

#### Subscription Lease

Hitachi 1503 Player	\$300./yr
PLACE-NAME-INDEX, CD-ROM	595./yr
Software/Documentation	100./yr
<u>Total per year</u>	<u>\$995.</u>

#### Purchase

Hitachi 1503 Player	\$950.
PLACE-NAME-INDEX, CD-ROM	2995.
Software/Documentation	245.
<u>Total (one time)</u>	<u>\$4,190.</u>

Free CD-ROM replacement if lost or stolen.

Satisfaction guaranteed or money back.

Installation & training provided on a custom basis, for an additional charge.

Computer hardware available on special request basis.

15% discount on two or more systems.

Leased equipment must be returned in good order.

The compact-disc is "Mastered and Replicated by Discovery Systems". PLACE-NAME-INDEX is copyrighted 1988.

A company representative has indicated that the system will be upgraded with DMA/BGN gazetteers and Soundex software access.

### Softworld

Real Estate Services — California — DAMAR

On-line real property information for every parcel in California, the company claims. "Total statewide coverage for as low as \$48 per month." For further information, contact DAMAR Corporation (800) 87-DAMAR. (from the *Oakland Tribune*, Dec. 15, 1987 - via Phil Hoehn)

#### Real Estate Services — Nationwide — REDI

Real Estate Data Inc. (REDI), long a provider of ownership information and real estate mapping on microfiche [also, the parent company of Sanborn Map Co. - a WAML Institutional Member] is introducing a companion product on CD-ROM, (*Optical Memory News*, issue 43, January 1987, p. 22). For more information, and perhaps of the heavily copyrighted profile, contact REDI, 2398 NW 119th St., Miami, FL 33167, tel.: 305/685-5731.

For a sample issue of *Optical Memory News* (ISSN 0741-5869) contact Rothchild Consultants, 256 Laguna Honda Blvd., San Francisco, CA 94116-1496, tel.: 415/681-3700. Subscriptions are ca. \$300 yr.; back issues \$15 to subscribers, \$25 to nonsubscribers; per page copy is \$2 from the Copyright Clearance Center, 21 Congress St., Salem, MA 01970, under serial fee code: 0741-5869 \$0 + \$2.00.

#### Software Alert from NTIS

##### Cartographic Automatic Mapping (CAM) 7th Edition. PB87-171864/HCT

The Cartographic Automatic Mapping (CAM) program is the output portion of AUTOMAP, an automatic mapping system developed by the CIA. CAM performs a variety of cartographic functions. The program can plot these functions on any one of 20 map projections and is set up to generate plot commands for Calcomp 1136, Gould electrostatic, Versatec electrostatic, Hewlett Packard, Gerber drum and Gerber flatbed plotters. The structure of the program is modular so that additional map projections, subroutines to read line or symbol data in various formats, subroutines for other features, and different plotter software can be added.

The new features include three new projections: The Space Oblique Mercator, The Two-World Perspective, and the Two-World Azimuthal. Also new is the comment command, the color command, many additional bar scale commands, a 3-D command for bathymetric data, a command for labeling grids, and a new command for names.

CAM may still be used in conjunction with World Data Bank I and II. World Data Bank II has recently been updated. Ordering information for CAM and World Data Bank I and II follows:

<u>Title</u>	<u>Order No.</u>	<u>Price</u>
CAM (7th Edition)	PB87-171864/HCT	\$500.
World Data Bank I	PB-223 178/HCT	\$150.
World Data Bank II		
Vol. 1 (No Am)	PB87-184776/HCT	\$175.
Vol. 2 (So Am)	PB87-184784/HCT	\$175.
Vol. 3 (Eur/Afr)	PB87-184792/HCT	\$175.
Vol. 4 (Asia)	PB87-184800/HCT	\$300.
Vol. 1-4 (set)	PB87-184768/SET/HCT	\$600.
CAM Program Doc.	PB87-171872/HCT	\$11.95
World Data Bank II		
User's Guide	PB87-184818/HCT	\$9.95

NOTE: Foreign purchasers must double listed price.

Telephone orders may be made to the NTIS Sales Desk on (703) 487-4650. If additional information on these products is desired, contact the Computer Products Support Group on (703) 487-4763 or the Product Manager: Lois Grooms, (703) 487-4807, or by mail at: U.S. Department of Commerce, National Technical Information Service, 5285 Port Royal Road, Springfield, Virginia 22161.

[PR-709 5/87]

#### Self Preservation

While map preservation precedes from just a handful of principles (protection of new sheets, chemical buffering, and transfer of the information to an easily duplicated, alternative medium), the theme variants are probably infinite. Many, too, are the intermediate steps which contribute to a sheet's longevity. One of these contributory factors is protecting a map sheet while it is out on loan, and, depending on the probable use, subject to a wide variety of hazards from superficial to gross. Even interlibrary loans have proven deleterious to the point where many maps are in such fragile circumstances they cannot be borrowed; it is even difficult frequently to give such maps away with any certainty of delivery in one piece. Mention, then, the very idea of loaning any map for class use, to support topical displays in the library or elsewhere, and, dare we print the words FIELD USE.

The use of temporary protective covers is such an obvious idea it certainly deserves at least a page — if not a chapter — in the imaginary handbook of proce

dures every curator keeps. If a thorough list of such clear protective covers has ever been published it should probably be re-run annually. As an addendum to the list, remember Bradley' Plastic Bag Co. (9130 Firestone Blvd., Downey, CA 90241) which we featured in the *Information Bulletin* some time ago. Anticipating my current interest in this topic — symptomatic of Bradley's homey merchandizing somehow — they sent me their current catalog and there, on p. 18818 (really!), was a fine selection of PLAN COVERS, complete with illustrations of little blue colored men in yellow hats, as well as yellow colored men, also in yellow hats, happily consulting their maps, secure in the knowledge that the 6-mil protection made the originals impregnable to "water spilling, dirt, mud, snow and all variations in the weather," not to mention their utility if you want to "make corrections and instructions on the cover with a grease pencil and later erase it with a soft, dry cloth." The ad copy implies, but does not explicitly state that the covers are sealed. Given their price, probably not. If nothing else, Bradley's wide selection of sizes and low prices can once again serve as a buyers benchmark. However, a note of caution, as with all such plastics, they may be chemically incompatible for long-term preservation and many of them are not suitable as display holders for one reason or another (surface brilliance or opacity, basic tint, or some other unforeseeable factor. Therefore, maintain standard practice and ask for an evaluation sample, buy from a "satisfaction guaranteed" dealer, or, at the very least, consult over the phone and write down the whole name of the agent who described the product. Bradley's can be reached toll free at 1-800-621-7864 (CA) and 1-800-322-8775 (elsewhere). With no further adieu, here is the "Bradley's Benchmark":

**PLAN COVERS**

These 6 Mil, see-through Plan Covers offer excellent protection for blue-prints and drawings. They protect your valuable papers from accidental water spilling, dirt, mud, snow and all variations in the weather.

**SAVES BOTH TIME AND MONEY**

The plan covers are strong enough to fit into your work force. It is easy to make corrections and instructions on the cover with a grease pencil and later erase it with a soft, dry cloth. You can put two (2) different plans back to back in the same pouch.

**6 MIL THICKNESS**

STOCK NO.	SIZE	WEIGHT			JUMBO ORDER
		PER 100 BAGS	100	1,000	
912KS	9"x12"	4.3	\$13.25	\$99.90	\$90.00
915K	9"x15"	5.4	15.90	109.83	87.86
1218K	12"x18"	8.6	22.75	159.65	127.72
1824K	18"x24"	17.7	32.45	227.93	182.34
2438K	24"x38"	36.5	60.20	425.07	361.32
3039K	30"x39"	46.8	68.50	466.83	466.83
3650K	36"x50"	72.0	103.55	718.20	718.20

Compare this to the ad which appears regularly in the *Professional Surveyor* (we bought the grommeted kind for classroom hanging, and oversize blueline storage using magnetic hooks on the backs of our steel map cabinets.)

An alternate source for large vinyl envelopes is the Fidelity Products Co., P.O. Box 155, Minneapolis, MN 55440 (phone 1-800-328-3034) "30 day lowest price" and satisfaction guarantees.

**NO MORE WET, TORN, UNREADABLE, PLANS, MAPS AND CHARTS**  
Vinyl Plan Covers

- Extra-tough and durable 8 mil vinyl with electronically sealed seams
- Completely waterproof...watertight plastic zipper keeps contents dry
- Brass grommets allow you to hang plans without piercing the vinyl.

Order in multiples of 12 only

Model	Size	Shpg. Wt Per Ctn.	Price, Each	
			12 or 24	36 or more
DN19561	8.5x11"	3 lbs.	\$3.40	\$3.00
DN19562	8.5x14"	3 lbs.	3.95	3.55
DN19563	12x18"	4 lbs.	4.55	4.05
DN19564	18x24"	6 lbs.	6.30	5.65
DN19565	24x36"	12 lbs.	9.95	8.95
DN19566	30x42"	14 lbs.	12.50	11.25
DN19567	36x48"	24 lbs.	14.40	12.90

In stock, F.O.B. Minneapolis, MN plant, UPS charges billed on invoice.



## PROTECTION FOR DRAWINGS, MAPS, CHARTS, ETC....

### Transparent Protective Envelopes

Durable, flexible, reusable protection in the shop, drafting room, office or field. .006 ga. non-stick clear plastic with heat sealed edges and full width open top. Completely waterproof and resistant to dirt, oils, graphite, paints and chemicals. Easy to store, rolled or flat.

Order in multiples of 6 only

Model	Size	Price, Each	
		6 or 12	18 or more
DN19551	9x12"	\$2.00	\$1.90
DN19552	12x18"	3.40	3.05
DN19553	17x22"	4.00	3.60
DN19554	18x24"	4.50	4.05
DN19555	24x36"	6.50	5.85
DN19556	36x48"	13.95	12.55

In stock, F.O.B. Minneapolis, MN plant, UPS charges billed on invoice.

### Two Faced

All of a sudden, double sided tape without liners seems to have flooded the catalogs in short and long rolls of various widths, and promised longevity. One is from tesa\* [FaberCastell], the other from 3M. The 3M tape #665 linerless 1" core, 25 yards, 1/2" wide; and, 3" core, 36 yards, 1/4, 3/8, 3/4, 1" and 1-1/2" wide. The tesa tape comes in similar widths.

If anyone has experience with either, would you drop a note to the *IB* Editor, since neither manufacture has favored our miniscule industry with an abundance of applications research, the claims of their very large ad campaigns notwithstanding (DuPont, on the other hand, wants to form an industrial partnership with "Self-Preservation", judging from the collateral paperwork recently sent ... Garrison Keeler, where are you when needed?)

### Do-It-Yourself SPEC Kits

Self-preservationists may want to arm themselves with the following Association of Research Libraries' assemblages. They are very complete and worth the time it takes to look them over, even if you are not a "mainstreamer."

Association of Research Libraries.

SPEC Kit # 70, Basic Preservation Procedures. 1981. \$20 (\$10 for ARL Libraries)+ \$5 p&p. Prepay.

SPEC Kit # 137, Preservation Guidelines in ARL Libraries, 1987. \$20 prepay. Also includes policies, priority statement, management issues, brittle book program descriptions and reading list.

A list of all "Kits" and the two above are available from SPEC, Office of Management Studies, 1527 New Hampshire Ave. N.W., Washington, D.C. 20036. Some, perhaps all, eventually find their way into the U.S. Department of Education's Educational Resources Information Clearinghouse, ERIC microfiche, available in most large libraries, or through interlibrary loan. (SPEC Kit # 69: Preparing for Emergencies and Disasters, is ERIC ED 250 120 for instance (several map collection manuals are also on ERIC fiche — perhaps some WAMLibrarian would be willing to run a Dialog search, or has access to the Wilson ERIC CD indexes placed in library schools throughout the country; if you do, and can, we could run it in the *IB* as a bibliography, especially if you can download to disc and send it to Stan Stevens.)

A complete and systematic manual is the aptly titled *Preservation Planning Program Resource Notebook*, full of reprints and source listings, according to a recent *ARL Newsletter* (No. 137, p. 7), and is also available from ARL (Pub No. S502, \$30.00).

### REPRO MAN

As with the cult movie classic, *Repo Man* — the only movie to reconcile the mystical with the thermonuclear — *Repo Man* is fascinated by the mechanical reproductive arts at about the technical level of Eddie Cantor's old lyric: "*the music goes round and round and it comes out heah*". For understanding in depth, *Repo Man* depends on the first-rate talents of others, the latest of which is Tamara J. Lavrencic's "Duplicate Plans, their Manufacture and Treatment," a thorough history of drawing reproduction which appeared in the [Australian] Institute for the Conservation of Cultural Material (Inc.)'s always-interesting *Bulletin* (Volume 13, numbers 3 and 4, December 1987, pp. 139-147). Tamara is Conservator at the Queensland State Archives in Brisbane, and this paper is both clear and informative on the nature of what we might call "spirit" copying and the quality of its afterlife; anyone who has taken possession of a blue-line print has experienced the sepulchral gratitude of these transient ghosts. It comes as a welcome relief, then, to have them categorically fixed, if not chemically. But speaking of that, the author is also instructive on some of the secondary manifestations encountered by the preservationist, to eventually

conclude: "Of the methods of large scale duplication surveyed at the Queensland State Archives, the two which appear to offer most hope for the future are photocopying onto archival quality paper or onto polyester film and silver gelatin photography onto polyester film or print papers," (p. 146) that is Xerox on microfilm.

This is all, at least partly, by way of introducing Xerox's new attitude respecting their (relatively) new model 2510 engineering photocopier. Launched about two years ago, this 36-inch-wide, pass-thru machine is small, light and simple to operate, will copy virtually anything an eighth of an inch or less thick and will do it on mylar, velum or a variety of papers, of any length, at a copy price of about 25-cents per square foot. When first announced, the base price of ca.\$3,600 seemed too good to be true, and was. Seems "Team Xerox" had, again, taken a page from the Razor marketing handbook (i.e., cheap razors/expensive blades or vice versa). Prospects were told: sure, they could have the copier for the ridiculous asking price, but they were in fact joining the "Team," in the form of a no-cut, no-trade service contract. Also, the "Team" was not going to do a lot of "hand-holding" of "onesey and twosey" customers like Repro-Man, ... take it or leave it. In a major concession to the inevitable, the "Team" has recently adopted a new marketing stance which brings this remarkable copier within the reach of libraries everywhere: units are now being sold through reprographics trade reps — ours is courtesy of the indefatigable Dietrich-Post Company (at 1-800-523-0561). While the Razor's price has climbed to about \$4,700. (\$1,100 to the second party vendor?), the blades are now a *laisse faire* matter. This can make a significant difference in many libraries, such as Repro-Man's, where a contractor buys and maintains the equipment. We have not yet priced out the copy costs, but hope to keep it at about \$1 per 36" x 36" reproduction on standard paper. Archival quality papers and drafting mediums will be proportionately more.

While the 2510 works from cut sheets, the various media for it can be supplied on rolls, and an available accessory will cut these to any length desired. Still trying to control the razor market, Xerox sales insists purchasers "should" come to them for compatible reprographic materials, but, in fact, equivalents are available from a number of reputable firms advertising their wares in such magazines as *Plan and Print*.

In our demonstration (Xerox came to us, not we to them, and were clearly anxious for our miniscule

account, probably confused by Repro-Man's high level of self-importance) it was especially gratifying to notice originals do not pass through the equipment as with traditional engineering photocopiers, where they would be subject to whatever travails were required for fixing the latent image (in Xerography it's a red hot "fuser" wire which melts the ferrous ink toner into the paper fibers). Passage of the original on this copier is over a clear plastic window on the machine top where it is phototransferred to a drum and onto the copy medium. This means, of course, that fragile old maps can be copied without harm. In fact, since the pass-through is a straight, flat trip, encapsulated maps should copy as well as unencapsulated ones; furthermore, a simple protective mylar sandwich will protect valuable old maps being copied, with any need for encapsulation. As for the host of other capabilities, the following comes from Repro-Man's recent huddle (or contact Pete Anderson, Dealer Sales Manager, Xerox Technigraphic Products, (wherever, Rochester, NY at last report), tel: 818/702-8173.

#### Deacidification

And finally, Arthur Plotnik, Editor of *American Libraries*, has reported [in the February 1988 issue, p. 94] the latest developments in the Library of Congress efforts to provide itself and the preservation world with the capability of mass deacidification of books. As reported throughout library literature, LC's support for the efforts of National Aeronautics and Space Administration to develop such a system blew up in its face, literally. Turning to private enterprise, "the Texas Alkyls Chemical Co. near Houston gave the Library of Congress a pleasing gift just before Christmas: A successful series of test runs on the Library's diethyl zinc (DEZ) vapor-phase process for mass deacidification of books — the first such tests in a facility LC considers adequately engineered. ... If safe and effective processing of large numbers of materials can be demonstrated at the new facility — and if funding is appropriated — LC will base its scaled-up main plant in Frederick, Md., on the same design principles." Continue to look for reports of developments in this field, eventually, we hope that mass deacidification will be available to the West Coast — will we have the political clout to convince our administrators that maps need to be treated before we encapsulate them — the economics of the situation will favor the treatment of books first, but if we keep our ears open for these developments and lobby with the preservation officers we could get a limited

quota for maps to be treated on a selective basis, after all, "brittle books" are not the only material crumbling in America's libraries!

### Profiles

A most enlightening article on **W. Graham Arader III** by Mark Singer appeared in *The New Yorker*, November 30, 1987 [Vol. 63, No. 41] pp. 44-97.

One librarian has remarked that the article "presents [Arader] in a most uncomplimentary light, and it says much about the antiquarian map marketplace as well. Great reading!"

### State Reports

States generally have at least one Mapping Advisory Committee meeting per year; we'll try to keep up in the *IB*, beginning this issue with Arizona, then catch-as-catch-can. Ed.

#### Arizona

The Arizona Land Resource Information System has established its own ALRIS Quarterly Newsletter (Vol. 1, No. 1 was Spring '87) to act as a clearing house for mapping information. For a free subscription, contact ALRIS, State Land Department, 1624 West Adams, Phoenix, AZ 85007.

The Arizona Mapping Advisory Committee met Aug. 27, 1987 to discuss geographic names ("Page Spring" has been accepted in Grand Canyon NP, "Magnet Arch" has been deferred, and the Arizona national gazetteer volume is now available from USGS, Denver, for \$31.

An Arizona "subsidence zones" map has been printed, a digital mapping base is being considered, state cartographer legislation is pending, and the AZMAC bylaws are being finalized. Arizona's 7.5-minute mapping will be finished by 1990, about the last State to do so.

Other meetings of AZMAC were held 12/3/87 and 2/18/88.

[Courtesy of William Bayham, Director, Arizona Land Resource Information System.]

## EQUIPMENT

### Horizontal Suspension Files

A solution looking for a problem to solve might best describe the ARTSTORE horizontal hanging file system available from the Robert P. Gillette Company, P.O. Box 5735, Columbia, South Carolina 29250, tel. 803/799-5158. Capacities range from 6" x 10" up to 22" x 40", and, the manufacturer claims space-savings up to 50% over flat files.

## ESSAY CONTEST

### *The Society for the History of Discoveries*

The Society for the History of Discoveries has announced its first annual prize essay contest.

Founded in 1960, the purpose of the Society is to stimulate teaching, research, and publishing in the history of geographical exploration. "We now call for essays on the topics embraced by the Society's name: the history of discoveries. Essays may deal with voyages, travels, biography, history, cartography, techniques and technology, or other aspects of discovery. The primary purpose is to enlighten the reader on some aspect of mankind's exploration of the world.

**ELIGIBILITY:** A person from any part of the world who will be under the age of 28 and will not have received a doctoral degree before March 2, 1988, is eligible to enter the contest.

**THE ESSAY:** The essay shall be original and unpublished, in the English language, and of no more than 6,000 words. A reasonable amount of illustrative and tabular material will be welcome. The essay shall be submitted in type-script, double-spaced and printed on one side of the paper.

**DATES:** Essays must be postmarked on or before 1 June 1988, and addressed to: Jonathan T. Lanman, Chair, SHD Prize Essay Contest, 9120 Burdette Road, Bethesda, MD 20817.

The award-winning essay will be judged by a panel of judges from the Society for the History of Discoveries. The panel's decision will be announced on or before 1 September 1988.

**CRITERIA:** Primary consideration will be given to the essay's originality and its contribution to new knowledge



and insights. Other considerations will be the author's demonstration of the relevance of the subject, the cogency of the presentation and the documentation, and the literary quality of the essay. In case of a tie, two awards may be given. If no essay is judged to be either appropriate or sufficiently meritorious, the right to make no award is reserved.

**THE AWARD:** The winner will receive a prize of \$500. The winner will be invited to make an oral presentation about the paper at the annual meeting of the Society. In addition, the essay will be published in the Society's journal, *Terrae Incognitae*. A travel allowance of up to, but no more than, \$500 will be added. It will be calculated as follows: 1. Transportation: actual cost, but no more than round trip, tourist class air fare. 2. Per diem while attending the Society's meeting.

### Sounding Board

#### DOS

The Directorate of Overseas Surveys will supply an additions list on subscription (£6.50 for airmail, £5.00 surface mail). This information can be supplied direct from Technical Information and Support Services, Overseas Directorate, Ordnance Survey, Romsey Road, Maybush, Southampton, U.K. SO9 4DH. [23 March 1987]

**Q.** We are looking for more information on a UPI feature of December 11, 1987, describing the international archaeological effort to catalog and inventory artifacts of Carthage (Tunis), especially the "computer programs that can project topographical features based on existing ruins," according to Jeffrey Schwartz, University of Pittsburg. [reply to: *IB* Editor, UCSD.]

**Q.** *I am presently working on a history of the highest place in the U.S., as it existed during each incremental expansion of the Republic.*

*I would appreciate information on any previous works relating to this topic, including essays, bibliographies and cartobibliographies.*

[reply to: Dr. R. Lingenfelter  
c/o Map Section, C-075P  
University of California-SD  
La Jolla, CA 92093

#### It's About Time —

**Q.** How do American astronomers, geodesists and cartographers tap in to the international standard time pulses maintained on atomic clocks? In Europe, this service is provided on special radio bands for which receivers are specially manufactured.

**A.** Similar to the time frequencies broadcast in Europe, the U.S. Government cooperates in an international time standard. Access to it is available in several ways. Most important for purposes of map reference are the following publications which discuss access, along with the technical aspects of the signals.

National Bureau of Standards [NBS] Publication TFS-602, NBS Time via Satellites (1983), NBS Special Publication 432, NBS Time & Frequency Dissemination Services, and NBS Special Publication 559, Time and Frequency Users' Manual, all available free from Time & Frequency Services, 524, National Bureau of Standards, 325 Broadway, Boulder, CO 80303.

As for a clock, Heathkit has one available as Kit GC-1000 (\$249.95) which locks on to the NBS broadcast signal and gives Universal Coordinated Time to 1/10th second  $\pm 10$  milliseconds; it will also display the local time in any of the world's 24 time zones, with automatic reset after power failures. Also available is a RS232C computer interface (Kit GCA-1000-1, \$49.95). For more info, ask for the Heathkit catalog from Heath Company, Benton Harbor, MI 49022.

The true aficionado may even take a course on these and associated hi-tech Global Positioning System techniques through Navigation Technology Seminars, Inc., 6134 Beachway Drive, Falls Church, VA 22041, tel: (703) 931-0500. Ask for their current course catalog. [Ed.]

#### Stash map

**Q.** "Hey, can you dudes turn me on to one of those, like, maps that show the national hemp groves (read cannabis ... trans.) out in the Mid west and along the Mississippi ... RIVER, for God's sake! — an apparent reference to the map of Bureau County, IL, where Sheriff Jack Narczewski has a jail full of errant Wolverines just down for the Big Game, according to a recent AP feature."

A. We referred this one to our knowledgeable expert on the scene. He replies thus: "I enclose a copy of your note requesting information on the marijuana map. I believe its popularity must be rated much higher to "Californians" than here in the Midwest.

"Our efforts to locate it turned up nothing and even a few "weedy" contacts were unable to identify it. I guess we need to improve our "grass roots" local map network.

Sincerely,

/s/ David A. Cobb

Map & Geography Librarian

University of Illinois at Urbana-Champaign"

[Until the smoke clears, this one will have to go begging, unless someone else can enlighten us. Hint: we did not look in the serial set ca. WWII.]

### Exhibits

#### *"Columbus and the World Map"*

The University of Wisconsin at Milwaukee received a \$38,000 grant from the National Endowment for the Humanities to plan an extensive Exhibition on *Columbus and the World Map* to coincide with the 1992 Quincentenary of Columbus' first voyage.

Five distinguished scholars have formed a team for this project. It is headed by Dr. Brian Harley of the UWM Geography Department, together with Dr. Roman Drazniowsky, Curator of the University's American Geographical Society Collection, and with the collaboration of Dr. David Buisseret of the Hermon Dunlop Smith Center for the History of Cartography at the Newberry Library, David Bosse of the William L. Clements Library at the University of Michigan, and Dr. John Parker of the James Ford Bell Library at the University of Minnesota.

The basic idea is that the four institutions will pool their expertise and resources in producing a major exhibition and a published catalogue. The emphasis will be on the maps of the period, using their images and the historical, scientific, and cultural events they portray as a means of reinterpreting the Columbian encounter for both the scholarly and public audiences.

With the strength of these collections the planned Exhibition will contain many of the rare original

maps and artifacts which recorded the discovery and exploration of the New World. The proposed themes for the exhibition include European maps and mapping on the eve of the Columbian voyages; Columbus and cartography; the earliest cartographic images of the Americas in manuscript and printed maps; the impact of the Columbian discoveries on the European cartography (including maps and the Ottoman encounter with the New World); maps as seen from an American Indian point of view; and the ideology of cartographic decoration.

Plans call for the Exhibition to be available from the end of 1989 through 1992. Inquiries are welcome at the project office. Contact Mark Warhus, Coordinator, The Center for Map History, American Geographical Society Collection, University of Wisconsin-Milwaukee, P.O. Box 399, Milwaukee, Wisconsin 53201, telephone 414-229-4101.

[Editor's Note: Readers may keep informed on this and other Quincentenary Columbian map topics through *Encuentro*, available from the Latin American Institute, University of New Mexico, Albuquerque, NM 87131. Individual subscriptions to this quarterly are \$12, institutional subscriptions are \$24.]

#### *Map Exhibit highlights great variety of maps acquired by Library of Congress*

A selection of sixty-five maps, arranged according to the various means of acquisition by the Library of Congress, were recently on display in the James Madison Memorial Building of the Library, outside the reading room of the Geography and Map Division.

Colorful and varied, the maps chosen for this exhibit provide a dramatic demonstration of the many different kinds of maps that come into the Library of Congress each year.

Among the maps included in the exhibit are the rare (an 1806 map of the rapids of the Ohio River surveyed and drawn by Jared Brooks, and a 1709 Dutch map of Africa); the practical (the location of crushed stone quarries and sand and gravel pits in the United States, and the Kiplinger forecast of population growth in Florida); the colorful (a map of Irish family names, and a relief map of the surface of the earth based on satellite imagery); the unexpected (a hand-made three-dimensional profile of a farm in New

Hamshire, and a 1950s collectors' world map with United Nations flags on which all of the individual metallic flags have been inserted); and the modern (a computer projection of the Rocky Mountains, and an aerial photo-mosaic of the city of Paris).

Since its official establishment in 1897, the Geography and Map Division of the Library of Congress has continually worked to enhance its collections of early manuscript and printed maps, atlases, and current maps. These cartographic materials are acquired in different ways: through purchase, gift, government deposit, transfer, domestic and international exchange, and copyright deposit. Government deposits result when Federal, state, and local government agencies deposit with the Library copies of their newly issued cartographic publications. Transfers to the Library occur because Federal agencies are required to deposit surplus maps and atlases from their library collections with the Library of Congress for use in its collections or for exchange. Domestic exchange is the means by which the Library of Congress draws upon its supply of surplus cartographic works to exchange them for other maps with a variety of institutions and organizations throughout the United States and its possessions. And, finally, international exchange is the implementation of a number of agreements that the Library has with many foreign governments, academic institutions, libraries, and international organizations to exchange its surplus materials for maps and atlases from around the World.

During the past year some 110,000 cartographic items were reviewed by the Division, and more than 65,000 of these were added to the collections. [Dec. 1987]

#### University of Illinois—Holy Land

"Scholars in search of rare maps of the Holy Land often begin with a pilgrimage to the UI Library.

There, the university's early map collection rates as "one of the major collections in the world today," said David Cobb, UI map and geography librarian. It is just part of the UI's stock of 370,000 maps, one of the largest academic map collections on Earth.

Twenty-seven of the ancient and classical "treasures" will be on display [...] through Jan. 31 [1987], as the UI unveils "Early Images of Terra Sancta," a special holiday exhibition of maps of the Holy Land.

The exhibit is in the Rare Book and Special Collections Library, 347 Library, [...]

In conjunction with the opening, Kenneth Nebenzahl, an internationally known map and rare book dealer, [gave] a free public lecture, "Maps of the Holy Land," ....

Among the items [that were on exhibit were] one of the first known examples of a printed map, the first map engraved by an Englishman, the first modern geographical dictionary and maps from such legendary cartographers as Ptolemy and Mercator.

As cradle of three of the world's major religions — Judaism, Islam and Christianity — the Holy Land is "the most mapped area of the world," said Cobb, who with Nancy Vick arranged the exhibit. By viewing maps from different periods, Cobb said, "we can observe how geographical knowledge grew through exploration, pilgrimages and scientific inquiry."

For example, a manuscript sea chart, believed to date from the late 15th century, details the Mediterranean coastline and ports. Richly colored, and decorated with an exaggerated view of Jerusalem, the chart is of a kind that encouraged travel throughout the Mediterranean, Cobb said. One of the most popular of these voyages was the annual spring pilgrimage to the Holy Land.

Also on display is Bernhard von Breydenbach's "Peregrinatio in Terram Sanctam," the library's recently acquired seven millionth volume. Published in 1486, it was the world's first printed travel book, and recounts Breydenbach's 1483 pilgrimage to the Holy Land, undertaken in repentance for the sins of his youth.

The exhibit includes "Nuremberg Chronicle," a 15th-century volume that amounts to "a year-by-year account of world history from Creation to June 1, 1493," Cobb said. "It is one of the great books of the 15th century, and one of the most extraordinary books ever printed."

Also on display will be a 1511 edition of Ptolemy's "Geographia," in which the Holy Land is depicted as Asia IIII, according to the original second-century Ptolemaic name. "Geographia" contains one of the earliest known printed world maps and the very first series of maps printed in color — "truly a landmark publication," Cobb said."

**Magnes Museum—Holy Land**

*The Cartographer's Vision: 400 Years of Holy Land Maps*  
— May 15th through September 11, 1988 at the Judah L. Magnes Museum, 2911 Russell St., Berkeley, California. [The Jewish Museum of the West]

There will be an opening reception on May 15th, 1-3pm; and on June 26th there will be a lecture by Rabbi Irvin Ungar on "A Cartographic Pilgrimage through The Holy Land."

This exhibition presents 37 artistically and historically revealing maps which illuminate the aspirations of peoples toward the Holy Land through the centuries.

"Early mapmakers believed the Holy Land was in the center of the world and Jerusalem in the center of the Holy Land, and they were thus so depicted," notes antiquarian Rabbi Irvin Ungar, co-curator with Magnes Museum librarian Jane Levy of the exhibition, who sees in Holy Land maps "a means by which cartographers have expressed political, ethnic, and cultural views, and through which, on this 40th anniversary of modern Israel, Jews can come into closer cultural and artistic identity with their heritage."

The expression of religious views in these maps, for example, is seen in their orientation: early Christian maps of the Holy Land often showed east on top, since Eden was believed to be to the east, while Moslem cartography would place the south - towards Mecca - at the top.

Among these decorated maps, which show the historical development in world views from 1493 to 1870 amid the changes in geography and science through those years, are a 1493 "Hierosolima" from Nurnburg which is considered the first painted picture of Jerusalem, and other rare pieces from throughout Europe, many originally in Bibles and geography books. Showing the significance of the Holy Land to diverse peoples, the maps in this exhibit fall into four categories: Creation and Beginnings, Journeys to the Promised Land, The Holy Land, Jerusalem. Most are from the collection of Rabbi Ungar, proprietor/curator of Holy Land Treasures in Burlingame [California], which specializes in these maps and antique Judaica.

[News Release, Magnes Museum]

**JOB BOARD**

[Editor's Note: As usual, we announce jobs even though the application deadline as stated may have closed; occasionally some jobs are reopened; nevertheless, it is better for WAML to record these for their intrinsic historical value.]

**University of Arizona  
Tucson, Arizona****Map Librarian**

The University of Arizona is seeking a professional librarian responsible for managing the map collection which contains over 200,000 sheet maps. Responsibilities include administration, public services, and collection development, as well as hiring, training, supervision, and evaluation of staff. The department includes a map cataloger, a .5 FTE map reference librarian, a library assistant, and 4 student assistants. The head works closely with other departments in the library system, serves on library wide administrative and planning committees, and is one of 6 department heads who report to the assistant university librarian for central services.

Applicants must have a master's degree in library science from an ALA-accredited school and a minimum of 3 years' academic library experience in a map collection. Demonstrated management and supervisory ability, knowledge of library automation, and a degree in a related field are preferred. Good communication skills are essential.

Minimum salary is \$29,000; higher salary is negotiable depending on qualifications and experience. Librarians at the University of Arizona have academic professional status, are eligible for continuing status, are voting members of the faculty, and may take up to 24 days' professional leave per year. They have 22 days' paid vacation, 12 days' sick leave, and 10 holidays.

The position will be available July 1.

Send a letter of application, resume, and names of 3 references by April 8 to: Shelley E. Phipps, Acting University Librarian, University of Arizona, Tucson, AZ 85721. [*American Libraries*, March 1988, p. 193]

Central Washington University  
Ellensburg, Washington

Asst Documents, Maps and Microforms Librarian

**General Description:** Reports to the Head of Documents, Maps and Microforms Department. Assists in the management of a selective depository library collection exceeding 500,000 items, a microform collection approaching 800,000 items, and a map collection containing 85,000 maps. Central Washington University is located in an attractive small town, 107 miles east of Seattle. Outdoor recreation opportunities.

**Duties and Responsibilities:** Provides documents reference service and user instruction; engages in collection development of documents, maps and microforms; responsible for technical processing of maps and Washington State documents. A forty-hour workweek, including evening and weekend assignments.

**Required Qualifications:** ALA accredited MLS; excellent written and verbal communication skills; ability to work effectively with people.

**Preferred Qualifications:** Course work and/or experience in documents or map librarianship; degree in social science, geography, or geology; knowledge of library automation; reading knowledge of a modern foreign language.

**Appointment Information:** Entry level position available October 1988; faculty rank and status; tenure track; twelve-month appointment as instructor; salary range from \$18,319 - \$23,000; generous benefits, 22 working days vacation. TIAA-CREF.

**Apply to:** Send letter of application, resume, names, addresses and phone numbers of three reference by December 1, 1987, to:

Chair, Asst. Documents Librarian Search Com.  
c/o Dean of Library Services  
Library  
Central Washington University  
Ellensburg, Washington 98926

Smith Center Fellowships

The Hermon Dunlap Smith Center for the History of Cartography at The Newberry Library, Chicago, offers a number of short-term and long-term fellowships each year. These fellowships are designed to enable scholars to spend time in residence at The Newberry Library working with the Library's extensive map collection and primary source material relating to the history of cartography.

Short term fellowships may be for two weeks to five months and carry a monthly stipend of \$750. A limited number of long-term awards are available for six to twelve months with a maximum stipend of \$25,000. Applications for short-term fellowships are considered twice a year with deadlines of 1 March and 15 October. The annual deadline for long-term fellowships is 1 March.

For additional information and application materials, write to Maureen Flanagan, Assistant Director, Hermon Dunlap Smith Center for the History of Cartography, The Newberry Library, 60 W. Walton Street, Chicago, IL 60610.

GRANTS

Higher Education Act

The tenth annual awards under the High Education Act II-C program have been announced. These awards, funded from the Congressional FY 1987 appropriation of \$6 million, support 37 proposals involving 46 different institutions. Ten of the successful proposals are continuations. Bibliographic control activities received 79% of available funds (\$4,732,543); preservation and collection development activities received 20% (\$1,202,696) and 1% (\$64,761) respectively. The Department of Education received 90 applications for funds requesting a total of \$16.3 million.

In the ten years of the program, funding has totaled \$58,494,264. Bibliographic control activities received 72% (\$42,144,818), preservation 21% (\$12,368,625) and collection development 7% (\$3,980,821). The program has supported 321 projects in 36 states and the District of Columbia.

Proposed revisions to the HEA II-C program regulations and deadlines for FY 1988 applications were published in the October 14 *Federal Register*, pp. 38192-95.

**University of California Map Libraries  
Granted Funds for Aerial Photography**

Collection Development Officers of the nine-campus University of California Shared Purchase Program have recommended to The Office of The President of the University that aerial photography covering all of California be purchased for the system's map libraries.

The aerial photography is being flown as part of the National Aerial Photography Program over a three year period. Central California was flown in 1987 with reflights in 1988 for rejected imagery, Northern California in 1988, and Southern California in 1989. The Santa Cruz campus is the lead-campus for the first year, ordering and distributing the imagery of Central California to the Berkeley, Davis, and Santa Cruz campuses. Each campus throughout the system will receive prints or film according to the established primary collection responsibility-areas.

The total purchase price for the three-year program is \$142,000. Stan Stevens is coordinator for 1988/89.

**University of Michigan & OCLC  
receive CLR grants for joint research project**

The Council on Library Resources (CLR) has awarded a \$47,925 grant to the University of Michigan School of Information and Library Studies, and a \$93,700 grant to OCLC for research on "Increasing the Accessibility of the Library of Congress Subject Headings in Online Bibliographic Systems."

The project will explore automated techniques to guide on-line users from their search terms to the subject headings and term relationships in the machine-readable Library of Congress Subject Headings (LCSH-mr). OCLC is contributing computing facilities and overhead valued at \$142,673, and the University of Michigan is contributing overhead valued at \$26,359. With the CLR grants the entire research project is budgeted at \$310,657. The four-phase project began September 1, 1987, and will run through December 1988.

[AT/L - October 1987, p.3]

**Conferences/Meetings**

Some Past--Some Future

**1988**

**March 7-10, Fort Worth, Texas**

AM/FM International Winter Conference. Contact AM/FM International, 8775 E. Orchard Road #820, Englewood, CO 80111, tel.: 303/779-8320.

**March 13-19, St. Louis, Missouri**

American Congress on Surveying and Mapping. Includes exhibit of 15th Annual Map Design Award winners.

**March 20-23, Arlington, Virginia**

Fourth Annual Research Conference, Bureau of the Census. Includes automated cartography program. Contact Maxine Anderson-Brown, Office of the Director, U.S. Bureau of the Census, Washington, D.C. 20233, tel.: 301/763-1150.

**March 20-24, Anaheim, California**

National Computer Graphics Association (Special Focus: Systems Integration)

**April 21-23, Pasadena, California**

Western Association of Map Libraries, Spring Meeting, Cal Tech.

**May 10-12, Ottawa, Ontario**

Conservation in Archives, Current Dimensions and Future Developments, International Symposium. Contact Ms Gerry Long, Coordinator, International Conservation Symposium, P.O. Box 3162, Station "D", Ottawa, Ontario, K1P 6H7.

**June 11, Los Angeles, California**

California Map Society. Dr. Helen Wallis, Fellow at UCLA's Center for Medieval and Renaissance Studies (Clark Library), will speak at the Department of Special Collections, University Research Library, UCLA. Contact: Dr. Vincent G. Mazzucchelli, (President, California Map Society), Department of Geography and Urban Studies, California State University at Los Angeles, 5151 State University Drive, Los Angeles, CA 90032, tel.: 213/224-3822.

**June 12-16, Denver, Colorado**

Special Libraries Association, Geography & Map Division. For more information contact June Crowe, Planning Department, City Hall, P.O. Box 27210, Tucson, AZ 85726-7210, tel.: 791-4505.

Sunday, June 12: Executive Board Meeting

Monday, June 13: Energy and the Environment: Where the Horizons Meet

Tuesday, June 14: Microcomputers Roundtable; GRIN: RLC's GeoReferenced Information Network; & Map Online Users Group: 'Establishing the Electronic Bulletin Board'; Innovative Strategies for Map Librarians.

Wednesday, June 15: Luncheon Speaker: John Garver, Chief Cartographer, National Geographic Society: "Cartography at the National Geographic Society: from crow quill to computer"; Contributed Papers Session: 'Illinois Geographic Information System', 'GeoBase: A Geographical data access program for the earth sciences'; 'Geographic information systems in the National Park Service'; 'Developing a geodetically controlled cadastral map database'. Thursday, June 16: Tour day.

**June 27-30, Bethesda, Maryland**

GOES (Meteorological) I-M Symposium/Workshops, \$195. Contact: Wayne D. Lasch, Greenhorne & O'Mara, Inc., P.O. Box T, College Park, MD 20740.

**July 9-14, New Orleans, Louisiana**

American Library Association, Map & Geography Round Table. Contact: Mary Larsgaard, Library, Colorado School of Mines, Golden, CO 80401, tel. 303/273-3697.

Saturday, July 9: Women in Cartography; Sunday, July 10: Government Documents as Rare Books; Monday, July 11: Mapping of the National Parks; Tuesday, July 12: History of Cartography (primarily of Louisiana); Wednesday, July 13: Tour of Federal Complex at Bay St. Louis; Thursday, July 14: optional tour of river-bayou-plantation.

**August 7-11, Los Angeles, California**

Urban and Regional Information Systems Association, "Mapping the Future." Contact: URISA, 319 C Street, Washington, DC 20003, tel.: 202/543-7143.

**November 6-9, Urbana, Illinois**

Conserving and Preserving Materials in Nonbook Formats. Graduate School of Library and Information Science, University of Illinois, 410 David Kinley Hall, 1407 W. Gregory Dr., Urbana, IL 61801, tel.: 217/333-3280.

**November 15-21, — Lest we forget —**

United States. Geographic Awareness Week.

**1989****August 17-24, Budapest, Hungary****INTERNATIONAL CARTOGRAPHIC ASSOCIATION**

14th International Cartographic Conference  
Conference Secretary, Institute of Geodesy, Cartography and Remote Sensing, H-1373 Budapest, POB 546, Hungary

Interested parties may send for the Second Circular which will provide details of the meetings, accommodations, etc.

Calendar Items Welcome.  
If you have  
Calendar Notices  
please send details to the Editor  
as early as possible.

## ATLAS & BOOK REVIEWS

edited by

**Peter L. Stark**

Map Librarian

University of Oregon

Eugene, OR 97403

**Foreign Gazetteers of the U.S. Board on Geographic Names, Microfiche Collection.** Bethesda, MD: Congressional Information Service, Inc., 1987.  
1505 microfiche (negative polarity), 24:1 reduction ratio. Includes 15 page printed bibliography. \$3,000.00.

CIS, the publisher of this collection of U.S. Board on Geographic Names (BGN) gazetteers, sent the editor a copy of its 15 page printed bibliographic guide and copies of two gazetteers on microfiche, namely Nicaragua and Zambia, not the entire set. This was enough, however, to adequately review the latest micro-publishing effort to come from the creative minds at CIS.

With so much experience in micropublishing, CIS has produced, once again, a quality product. The fiche is characterized by the clearness of its eye-readable header, which is set off by a bright yellow strip. Image quality is quite high in terms of contrast and resolution.

Only the most current gazetteer for each country has been reproduced for this collection. The publication dates range from 1950 to 1986. Not all these gazetteers were distributed through the Government Printing Office's depository program, so it is inevitable that depository libraries will be missing volumes, particularly some of those issued during the 1950's. Tragically, several gazetteers from the 1980's have been withheld from depository libraries due to bureaucratic definitions of proprietary information.

The printed bibliography is excellent and can stand on its own as a superb reference tool. It alphabetically lists the countries included in the collection, with cross references to previous names of a country (if any) and countries grouped together in one gazetteer. It also includes within the citation for each gazetteer a CIS accession number, exact title, date of publication, collation, series number (if any), issuing agency, SuDocs classification number, DMA price and stock number and, where needed, contents notes. The set can be ordered from Congressional Information Service, Inc., 4520 East-West Highway, Suite 800-DM, Bethesda, Maryland, 20814-3389 or call toll free, 800-638-8380 (in the Washington, D.C. area, 301-654-1550). There can be no argument. CIS has produced a high quality reference tool.

The question to Map Librarians obviously is, can libraries justify the expenditure of \$3,000.00 to purchase a complete set? Clearly, at the prohibitively high prices the Defense Mapping Agency charges for these light blue volumes, a complete set in hard copy would cost much, much more than \$3,000 and would not include several volumes now out-of-print. But depository libraries who have selected BGN gazetteers already have a majority of the volumes and even at outrageous DMA prices, can complete their sets at much less cost than buying the whole set on microfiche from CIS. For \$568.00 the University of Oregon Map Library could purchase the ten missing volumes (based on CIS's bibliography) and complete its holdings. The University of Illinois at Urbana-Champaign reports four volumes missing (also based on CIS's bibliography), three of these costing a total of \$139.00, but one out-of-print. Each library must evaluate its own collection in order to make an informed decision



concerning the CIS microfiche set. A great deal of shelf space can be saved, and this argument just might convince me, a few years down the line, to purchase the collection. Fifteen feet of BGN gazetteers can be compressed into fifteen inches of microfiche drawer space. For many libraries the decisive consideration might well be the space they can save.

In my own opinion, the price is much too high. I have long thought that the Defense Mapping Agency raised its prices for these gazetteers so high because DMA either believed that sales could recover costs of production or, since DMA does not like to deal with the public, price was a way of discouraging orders before they were placed. If CIS depended upon DMA's hard copy price to determine its own price for its fiche collection, they should reconsider their \$3,000.00 sticker, for the DMA price is clearly inflated and has been for a long time. Further, if CIS did rely on the DMA hard copy price to set its microfiche collection price, CIS might ask DMA how many gazetteers they have sold to libraries in the past six or seven years.

CIS should be thanked for raising the BGN gazetteer issue with Map Librarians through their new microfiche offering. The Cartographic Users Advisory Committee should be mobilized to obtain confirmation from the proper authorities that item number 617, or DMA gazetteers (SuDocs D 5.319: nos.) are a part of and will be issued through the Government Printing Office's depository library program, and that all gazetteers not received in the past six to eight years (a list can easily be made) be sent to depository libraries selecting item number 617.

In the meantime, CIS should reconsider its total price of \$3,000.00. It should also consider selling individual countries based on number of fiche needed to cover the country. As Larry Cruse stated in his last "MicroCartography" column, "If all else fails, the WAML Microform Consortium will undertake a project to microfilm the items [gazetteers] not received and provide them for \$2.00 each." For now, I will sit on the fence and track the activities of both CUAC and the Congressional Information Service.

**Peter L. Stark**  
Head, Map Library  
University of Oregon  
Eugene, OR 97403

**Goodall, Brian. The Facts on File Dictionary of Human Geography.** New York: Facts on File, 1987. 509p. \$29.95. LC: 86-29232. ISBN: 0-8160-1738-7.

Happily, within the past few years there have been valuable new human geography dictionaries that have appeared on the geographic scene; happily, because for many years most geography dictionaries had a decidedly physical geography bias. *The Facts on File Dictionary of Human Geography* is a welcome addition. The definitions are clear with many accompanying illustrations and cross references to other terms. There are also enough terms which are not included in R. J. Johnston's second edition of *The Dictionary of Human Geography* (Oxford: Blackwell, 1986) or in Larkin and Peters' *Dictionary of Concepts in Human Geography* (Westport, Conn.: Greenwood Press, 1983) to warrant purchase of *The Facts on File Dictionary* as well. (E.G., city of death, halo effect, microgeography, psychic distance.) It is well thought out and thorough.

However, let the reader be advised that *The Facts on File Dictionary of Human Geography* is the same as the newly released *Penguin Dictionary of Human Geography* (Harmondsworth, Middlesex, England: Penguin Books, 1987) except for two minor differences. The Penguin edition has a two page preface which has been omitted from *The Facts on File Dictionary* and the Penguin edition is also in paperback format with the usual smaller type and poorer paper quality. Libraries will only require one of these editions. Because it is more durable for reference use and easier to read, I would recommend purchase of *The Facts on File Dictionary of Human Geography* for libraries. Whereas, the Penguin edition, priced at \$7.95, would be a better recommendation for geography students, faculty and others interested in a good human geography dictionary for their personal library.

**Sandra J. Lamprecht**  
Geography Librarian  
University of California  
Davis, CA 95616

**Konvitz, Joseph W. Cartography in France, 1660 — 1848: science, engineering and statecraft.**

Chicago: University of Chicago Press, 1987.  
194 pages, illustrated., maps. LC: 86-11283.  
ISBN 0-226-45094-5 \$39.95.

Professor Konvitz's Nebenzahl Prize-winning study, issued from his redoubt at Michigan State University, reaffirms the academic Midwest as the United States' premiere region for the study and appreciation of cartography. The regularity, intensity and topical relevance of their scholarship stands in sharp relief against sporadic production elsewhere. Why should this be so? Can it be exported, expropriated or duplicated somehow? This phenomenal record deserves study itself, to start perhaps with the role of map librarians Robert Karrow and David Woodward, who apparently ganged up on the author of this study to his eventual credit.

Professor Konvitz's book found an eager recipient here, so carried away that I sent him a note of thanks before reading it (in my opinion he deserved appreciation for the attempt regardless of the result.) I expect we have all been waiting for a book like this for years — a French equivalent for those on other European nations and in English. The French have so neglected this topic themselves, leaving the field to (mostly) foreign connoisseurs as the author's eight page bibliography makes clear. The research documents are accessible, thanks to the indefatigable Monique Pelletier and her staff at the Bibliothèque Nationale in Paris (reminiscent of Helen Wallis's catalytic effect at the British Library). Is it to her we owe the fine inclusions that appear in Konvitz's work on D'Anville, whose map collection she is preserving on color microfiche? If so, thanks go to Monique Pelletier on behalf of map librarians everywhere, and to the author for his exposition on D'Anville in his *Cartography of France*.

Less it sound as if Professor Konvitz was a naive and unwilling agent of a map librarian's cabal, look again at his subtitle, which places at least one foot of this work in the classic historical tradition. That craft is present in each of six measured chapters: the Cassinis and their monumental *Carte de France*; the precise mapping of external borders and uniform cadastral mapping of internal ones; development of the hydrographic survey with its adaptive invention of the contour line principle for underwater topogra-

phy; precise surveys of high altitudes as military and geological curiosities; mapping the transportation net in recognition of its circulatory importance; and, finally, the graphic portrayal of geostatistical information. While each is ostensibly a cartographic topic which the French invented, adapted or adopted, they are especially significant to the author as symptomatic of the rational information tools needed by civil or military bureaucracies for running the world. In fact, it struck me that Dr. Konvitz was using French cartographic history to prototype the modern nation state as a mix of captive scientific and engineering inventive talent harnessed to ministerial ends. Consequently, Professor Konvitz frequently caught me off balance, expecting him to be eulogistic, but he does not indulge in nostalgia.

The expectant reader now should know the book is not encyclopedic account of French cartographic history, however it is thorough. It is continuously informative for its 200 pages, and 28 illustrations, especially the effective decennial sheet production of the *Carte de France*, and the color illustration of a fantasy landscape exercise by a French cartography student. Some other illustrations are familiar as they were presented before in *Cartes et Figures de la Terre* (Paris: Centre Georges Pompidou, 1980), in Edward Tufte's *The visual display of Quantitative Information* (Cheshire, CT: Graphics Press, 1987), and in the various works of Arthur Robinson.

Regardless of any caveats attributable to my observations, this is a very important book, treating a fiendishly difficult period in unexpected and helpful ways. Every research library must have a copy. But will one copy suffice? For all of the cross disciplinary demands it is likely to meet, two copies would not be excessive in most cases.

Readers may be disappointed for the want of a chapter devoted to French urban mapping, a discussion of Cassini's intellectual debts to Galileo and Descartes, as well as a discussion of Napoleon's intention to create an Imperial map of Europe on the Cassini foundation. If so, they will find the eighteen pages of notes a worthy point of embarkation for such supplemental studies.

Larry Cruse  
Map Section — University Library  
University of California-San Diego  
La Jolla, CA 92093

Mutunayagam, N. Brito and Bahrami, Ali  
**Cartography and Site Analysis with Microcomputers: A Programming Guide for Physical Planning, Urban Design, and Landscape Architecture.** New York: Van Nostrand Reinhold Company, 1987. 184 p. \$34.95. LC: 86-5528 ISBN: 0-442-26293-0

This volume was written with the intent of facilitating the use of microcomputers by planners, urban designers, and landscape architects for map generation and site analysis. It includes a brief review of the criteria that should be considered for selecting a microcomputer system for graphic analysis, an overview of computer configurations, as well as programs written in Applesoft BASIC that could be utilized as is or modified for use with a variety of systems. It is intended to be a "hands-on" reference source for the professional with little or no experience with microcomputers.

**Cartography and Site Analysis with Microcomputers** begins by offering the computer illiterate professional a general background that will enable him or her to be somewhat knowledgeable in considering the use of microcomputers for planning and design purposes. The first four chapters of the book describe the shifting attitude toward computers by the audience for which the book is intended and gives a quick lesson on the components of a computer system. These introductory chapters also provide the basic information needed by the planning and design professional when considering the acquisition of a microcomputer system for graphic analysis and design. A limited listing of the current software packages that are available is also included in this section. These thirty-nine pages should be among the required readings for any professional that is entertaining the idea of using microcomputers to replace or supplement manual drafting or to enhance the decision making process where attributes can be clarified and analyzed more effectively when represented in a spatial context.

A significant portion of chapters five through twelve presents Applesoft BASIC and its use in graphic analysis. The majority of the text includes programs for establishing a menu, and creating an active work space for map compilation. Also included are subprograms for color selection and utility management. Although the writing is somewhat technical, this section of the book can provide the

non-computerized professional with a general idea of the capabilities of microcomputers for cartographic and site analysis.

The authors encourage this volume for non-Applesoft BASIC users and recommend it for users who are willing to adapt the programs for use with other versions of BASIC and different programming languages. This idea does not appear unrealistic if the user already has some knowledge of computers and software applications. The first time user, however, may find this a difficult task. For this reason the book appears to have a very limited audience in terms of using it for "hands-on" reference material. Only the person using the same system and software as the authors would benefit by having the book sitting on the desk for frequent use.

**Cartography and Site Analysis with Microcomputers** is recommended for planning and design professionals that are interested in learning more about microcomputers and their use in physical planning and site analysis and are considering the acquisition of such a system. Professionals would be encouraged to check out the book from a local library rather than spend \$34.95 for a book with limited use to the average user. The book would appear to be a good investment for planning and landscape architecture libraries that are interested in providing their users with information on current planning and design techniques and skills.

**Karen G. Sommerlad**

Urban Planner

BERNS, CLANCY AND ASSOCIATES, P.C.

Consulting Engineers, Land Surveyors, Planners  
Urbana, Illinois

**Reader's Digest Guide to Places of the World.** London: The Reader's Digest Association Limited. 736p. (U.S. Distributor: Reader's Digest, Pleasantville, N.Y. 10570) ISBN 0-276-39826-2 \$29.95

From time to time attempts are made to mix atlas and gazetteer formats in a single volume. **THE INTERNATIONAL ENCYCLOPEDIA AND ATLAS**, published by Houghton Mifflin in 1979 and now unfortunately out-of-print, was one such attempt which proved successful. It combined 25,000 geographical entries with 200 locational maps, and concluded with a 64 page atlas followed by a 48 page index to that atlas. It has become a standard reference work in libraries.

**THE READER'S DIGEST GUIDE TO PLACES OF THE WORLD** is somewhat similar, but inferior, to **THE INTERNATIONAL ENCYCLOPEDIA AND ATLAS**. A British production, its major contributors and consultants, of which there are about two dozen, are affiliated with the University of London and a scattering of other universities both British and Commonwealth. It is impossible to determine which individual is ultimately responsible for this corporate product: Alan B. Mountjoy is listed as the "Consultant Editor."

There are almost 8,000 gazetteer entries (by the publisher's count). These entries range from a single sentence to two concise paragraphs, and they give just the bare bones of identification. They do not, for example, include longitude and latitude. They do, however, give simple coordinates to the approximately 150 nation maps and accompanying short articles that are found in alphabetical sequence throughout the book. Thus the entry "Beersheba" refers the reader to "MAP Israel Ab." The map of Israel, which is interfiled with all the other entries, is at the approximate scale of 50 miles to the inch (only bar scales are provided). Beersheba is found by following the "Ab" coordinates. As no more than 40 places are marked on that map, Beersheba is quickly identified. Most of the nation maps fill less than a page: the El Salvador map is only 1 1/2' x 2'.

These nation maps are in color with shaded relief. They don't show roads or railroads, and only the most important of cities are marked. The United States map (there are no state maps), shows only Portland and Salem in Oregon, and in California

omits such cities as Bakersfield, Redding, Modesto, and Riverside, to name just a few. These cities do not have gazetteer entries either. There are a few continent maps and a two-page world map — the largest map in the book. Thoroughness of map coverage is not a virtue of this work.

Along with these features are 23 pictorial short articles on major natural features (glaciers, rivers, ocean currents, etc.) and 14 "worlds records" entries (bridges, dams, skyscrapers, etc.) which are interspersed among the placename entries. There is no index.

The short articles for each country are set off on a gray-green background, thus giving this book the look of the "U.S.A. Today" newspaper. Gabon gets half a page of text while Japan has four pages, counting pictures and map. Each nation article ends with a statistical table showing population, capital, currency, major industries, and life expectancy. These articles are reasonably up-to-date: the one on the Philippines includes the inauguration of Cory Aquino.

Also interspersed are 250 color illustrations which are well-chosen to evoke a sense of place.

There are two appendices, and they too are brief. One is three pages of color plates of national flags, and the other is two pages of descriptions of "International Organizations and Alliances" which include NATO, the Colombo Plan, OPEC, etc. — 16 in all, and none with addresses. There is no bibliography.

This book is aimed at the home market, although it might also be useful in small school libraries. Just about everything in it can be quickly found in standard encyclopedias and almanacs, but for homes lacking either, and we must assume there are many, it might come in handy. It is attractive, easy to use, and firmly bound in imitation leather boards. And the price is fair, considering all the color work. But few readers of this journal will want it for their map collections.

Harold M. Otness  
Southern Oregon State College Library  
Ashland, Oregon

Thorndale, William & William Dollarhide.  
**Map Guide to the U.S. Federal Censuses,  
 1790-1920.**

Baltimore: Genealogical Publishing Co., 1987.  
 xxvi, 420 pp. \$49.95 plus \$2.00 postage. LC: 87-  
 80143. ISBN 0-8063-1188-6.

Genealogists and historians have for many years used the federal population census schedules for family history research and for related studies: Until now it has not been possible to definitively study county jurisdictions—the basic census unit—with the corresponding federal census year. The work under review identifies all United States county boundaries for the period 1790 to 1920. On each of the almost 400 maps, old county lines are superimposed over the modern ones to highlight the boundary changes. Counties in existence during the census year are lettered in black on each map, as are modern lines that coincide with census lines. Names and county lines in white lettering indicate modern county boundaries. Thus a researcher is able to visually compare the modern and original county lines. Valuable historical notes are found on most maps.

The introduction gives good background information on federal censuses and their completeness. State maps are alphabetically arranged and thereunder, chronologically by census years. Separate maps for some large cities and territorial differences are also found. Other valuable features include a section listing pitfalls in mapping boundaries and a bibliographic essay discussing the mapping of historical county boundaries. The work concludes with a county level index arranged by state and counties which shows the locality zone number on the maps, instead of a page number, which is keyed to the zone divisions above each map's legend bar. Defunct county names appear in the index in italics with the years of their censuses. Some researchers may find the index difficult to use.

Throughout, this is a quality production—the compilers and publisher are to be complimented. The *Map Guide* received the prestigious Certificate of Appreciation from the American Society of Genealogists. This reference book is needed by any library housing genealogical and family history sources. It is essential as background study for anyone searching

the federal population census schedules and as a genealogical reference source. Two recommendations for a future compilation would be to identify county boundary changes between federal census years and to include maps of pre-1790 boundary changes.

A related scholarly compilation, useful in genealogical research and census studies, is the Newberry Library's *Historical Atlas and Chronology of County Boundaries, 1788-1980*, 5 vols. (Boston: G. K. Hall, 1984), although it does not include maps of all states.

**Kip Sperry**  
 Certified Genealogist  
 Fellow, American Society of Genealogists  
 Collection Development Specialist  
 Family History Library  
 Salt Lake City, Utah 84150

**Publications Received**  
 Compiled by  
**Peter L. Stark**

**Atlas of Global Strategy.** Lawrence Freedman. London: Macmillan, 1985. (An Equinox Book) 192 pages. Illustrated, maps and photographs. Hard and paperbound, 28 x 21 cm. ISBN 0-333-38416-4 (hardbound) £14.95 — ISBN 0-333-41359-8 (paperbound) £9.95

"So in order to understand contemporary international affairs, we cannot ignore war." Lawrence Freedman in his preface to this remarkable atlas states that nations do prepare for war and even though war is indeed unthinkable, the "book offers some explanations for the character of contemporary conflict and military strategy, without advocacy and in a reasoned and dispassionate manner." The atlas is about the many conflicts in the world since World War II and the preparations and plans being made by the superpowers for future wars. Many maps are of a variety seen in news magazines and portray

struggles in Angola, Northern Ireland, Cyprus and Central America, to name only a few. World maps show such subjects as acts of terrorism, world conflict since 1945, possible nuclear exchanges and arms trade. The atlas is profusely illustrated.

The atlas differs from Michael Kidron's and Dan Smith's *War Atlas : Armed Conflict - Armed Peace* (New York : Simon and Schuster, 1983) in the amount of text, illustrations and a feature absent from Kidron's and Smith's work, regional maps (the raid on Entebbe, the Vietnam and Korean Wars, and possible cruise missile routes). Recommended to map libraries for the many hard to find maps of regional conflicts.

---

**Early Images of Terra Sancta : Maps of the Holy Land.** Arranged by David Cobb and Nancy J. Vick. Urbana, IL : University of Illinois Library Friends, 1987. 16 pages. Illustrated, 6 maps. Paperbound, 21.5 x 28 cm. \$7.95

This attractive, well-designed exhibition catalog carries the subtitle, "An annual holiday exhibit, Rare Books and Special Collections Library, University of Illinois Library at Urbana-Champaign". The catalog's text presents the cartography of the Holy Land through four chapters each devoted to a specific period in the history of cartography; "Ancient and Classical Mapping (ca. 500 - 1500)," "The Rediscovery of Ptolemy (ca. 1475 - 1550)," "Ortelius and the Rise of Dutch Cartography (ca. 1550-1650)," and "The Early Modern Period (ca. 1650 - 1725)." The three color reproductions of maps of the Holy Land by Renardus Sylvanus (after Ptolemy) 1511, Bleau 1642 and Ortelius are remarkably crisp and readable.

The catalog is available from the University of Illinois Friends, 227 University Library, University of Illinois, 1408 West Gregory Drive, Urbana, Illinois 61801, for \$7.95. Overall, a fine production.

### **Historical Atlas of the Outlaw West.**

Richard Patterson. Boulder, Colorado : Johnson Books, 1985. vi, 232 pages. Illustrated, maps and photographs. LC 84-082543. ISBN 0-933472-89-7 \$14.95.

The "Outlaw West" refers to 18 states all west of the Mississippi River except Minnesota, Arkansas and Louisiana. "Atlas" refers to a map for each of these states, usually a Rand McNally or Colton atlas plate, from a variety of years, but all previous to 1900, twelve sketch maps of states and regions and two partial city plans, namely, Tombstone, Arizona in 1881 (O.K. Corral) and Coffeyville, Kansas in 1892 (Dalton Raid). With only 32 black and white maps in its 232 pages, the work really is not an atlas at all, but a collection of stories about the careers of infamous outlaws, bandits and brigands, organized geographically by state and further, by cities, counties, and regions within that state. Very little new information about the outlaw west will be found in this book. Not recommended for college or university map libraries, but it may have a place on public library shelves.

---

**Geosciences Information Society : Proceedings for 1986, Volume 17, the Users and Geoscience Information.** Edited by Robert A. Bier. Alexandria, VA : Geosciences Information Society, c/o American Geological Institute, 1987. iv, 113 pages. Paperbound, 28 x 21 cm. ISBN 0-934485-14-3 \$35.00.

Volume 17 of the GIS Proceedings contains eleven essays on the topic of the user and geoscience information. All essays have relevance to the Map Library with geologic maps in its collections or for those libraries that frequently refer users to libraries that hold geoscience information.

Available from the Publications Manager, Geoscience Information Society, c/o American Geological Institute, 4220 King Street, Alexandria, Virginia 22302.

Other volumes in the GIS Proceedings series such as Volume 16 (1985) "Micros, Minis, and Geoscience Information" are available from the same address.

**Maps of an Emerging Nation : The United States of America 1775 - 1987.** Reston, VA : U.S. Geological Survey, 1987. Map, 56 x 74 cm., folded to 28 x 12.5 cm. (National Atlas of the United States of America) (38077-H1-UG-05M-18) \$2.50.

To commemorate the bicentennial of the signing of the U. S. Constitution, the U. S. Geological Survey has issued a colorful special map sheet entitled *Maps of an Emerging Nation* that illustrates the territorial growth of the United States during the past two centuries. One side of the sheet has a series of 14 maps portraying the nation's territorial development and corresponding national flags for selected years from 1775 to the present. The reverse side has a reproduction of the second edition of a map produced by Abel Buell in 1784 that shows the United States as it existed about the time the Constitution was written. The original Buell map was the first map of the United States produced by an American.

Copies of the U.S.G.S. map sheet can be purchased for \$2.50 each from the U.S. Geological Survey, Map Distribution, Box 25286, Federal Center, Denver, Colorado, 80225. Orders should specify the map name, "Maps of an Emerging Nation" and include checks or money orders payable to the Department of the Interior—USGS. Each order for less than \$10.00 must include an additional \$1.00 for postage and handling. Copies are also available over the counter at the National Archives Museum Store in Washington, D.C. and at all U.S. Geological Survey Public Inquiries Offices in Washington, D.C., Anchorage, Dallas, Denver, Los Angeles, San Francisco, Menlo Park, Salt Lake City, Spokane and Reston.

From USGS News Release  
September 16, 1987

---

**A Portolan Atlas of the Mediterranean Sea and Western European Waters (with a World Map), ca. 1590.** Jaun or Francesco Oliva. Washington, D.C.: The Library of Congress, 1987.

The Library of Congress has published a facsimile of a 16th-century portolan atlas. The atlas consists of four Portolan charts and show: (I) the eastern Mediterranean with Greece and the archipelago and the Black Sea; (II) the central Mediterranean; (III) western Europe and the British Isles; (IV) north-west Africa. The world map, drawn on an oval projection, shows North America joined with eastern Asia. All of the charts are printed in full color.

The facsimile edition, which includes an introduction by John A. Wolter, Chief of the Geography and Map Division of the Library of Congress, is bound in a heavy cream-colored paper stamped with a gold design based on the original and covered with a textured paper book jacket. An index map, created specifically for this facsimile edition by Joseph W. Wiedel, professor, Geography Department, University of Maryland, helps provide an orientation for the charts and shows how they relate to one another.

The facsimile Oliva Portolan atlas is available for \$15.95 at the Sales and Information Center at the Library of Congress, or it can be ordered by mail from the Information Office, Box A, Library of Congress, Washington, D.C. 20540. Checks should be made payable to the Library of Congress and must accompany the order. Add \$2.00 to mail orders to cover the cost of shipping and handling.

From Library of Congress  
News Release October 27, 1987

**Tactile Maps : A Listing of Maps in the National Library Service for the Blind and Physically Handicapped Collection.** Devon Skeelee Liner, Managing Editor. Washington, D.C. : The Library of Congress, National Library Service for the Blind and Physically Handicapped, 1987. vii, 133 pages. Paperbound, 29 x 21 cm. LC: 87-600240. ISBN 0-8444-0549-3. Free?

The National Library Service for the Blind and Physically Handicapped (NLS) has developed this catalog of 327 maps (large-print, braille, and on cassette) to provide access to its circulating collection of tactile maps and to stimulate interest among individuals who have not used such maps in the past.

All maps listed in the catalog are available on loan to readers registered with a cooperating network library serving blind and physically handicapped individuals. Maps may be borrowed for a period of six weeks. The catalog can be obtained (probably free of charge) by writing the National Library Service for the Blind and Physically Handicapped, The Library of Congress, 1291 Taylor Street N.W., Washington, D.C., 20542. Telephone: 202-287-5100.

---

## The Last Page

Idle Speculation, Hearsay, Rumor and other Antiquantifiable Discharges  
by The Editor, and other Contributors

### Pacific Centered World Map Shower Curtain

Faithful *New Yorker* readers surely noticed a description of "The World", Saturday Knight Shower Curtain company's vinyl political map shower curtain. [June 22, 1987, p. 24]

While the article is enjoyably thorough on the shower curtain's origins, everyone is mystified by its popularity, as is the case with the motif of shower curtains in general, apparently.

The article quotes such often witnessed by rarely spoken stylistic goals as: "There's no pattern at all, he said, and laughed," ...; "Pastels are very popular in the market these days, and the design just worked out that way," ... and "of course, I thought we should do the Soviet Union pink".

The transparent shower curtain is available in specialty bath shops nationwide and an opaque version is also available from at least one mail order house, Wireless with a toll free number 1-800-328-5252, 8a.m. - midnight, Central Standard time; ask for Spring 1988 catalog product #9645 and be ready to pay \$37.50 (the transparent "edition" may not be available from this source, but either style is a refreshing change (Antarctica, perhaps an afterthought, is bigger than North and South America combined). —

Ed, with shopping support from Harold Otnes, Southern Oregon State College.

### Mappish Maunderings

— by J. B. Post

Having returned from a two day trip to Washington which was ostensibly taken to visit the Library of Congress and the National Archives to see how those august institutions deal with prints & pictures, but was really taken to hear the talk on cartifacts and maps on the landscape at LC as well as get to the Map Store, I must report a very successful trip on all levels.

I have some real good leads on preservation techniques and terminology control as well as the useless information about new maps (which are not my table so the information must be classed as professionally useless even if of use to me personally) and an awareness of the existence of cups with the Harvey Hutter distributed views of cities on them. Ah, all we need

now is Xmas tree ornaments with maps on them; probably antique globe patterns would sell and maybe "Earth from space" ones would be marketable.

I did manage to pick up a new ADC (formerly the Alexandria Drafting Co.) street atlas of the Harrisburg (PA) area, which, I am told, is the first one ADC has done as a "computer generated" product. I guess that will make it a collector's item in the future. Also, I am told, such atlases are in the production stage for the Raleigh & Durham (NC) areas.

Waiting for me when I got back was *Off the Ancient Track ...* by Jason Eckhardt. It really isn't as good as Beckwith's *Lovecraft's Providence*, but I don't begrudge having it. I guess the evaluation is "eh", as I am neither thrilled with it nor appalled with it. It did stir me to check out some Vermont locations which I had been meaning to do for several weeks; with all my maps at home, I often don't get to them.

While at LC, I was shown clipped pages from *The New Yorker* with a profile of W. Graham Arader III. I think it is the 30 Nov. '87 issue. It was a topic of conversation at LC. (*Hmm, Jonathan wants to make money; maybe I should try to apprentice him to Graham.*)

Today while out shopping, we picked up (among much other stuff) one of those Aaron Blake productions which dare to call themselves "maps." This one, the "Ian Fleming Thriller Map", wasn't as offensive to me personally as some of the others. They are maps, but rather bad ones; a great idea ruined because of bad graphics.

Joyce reports to me that the late show on local TV last night was the Fred Astaire & Ginger Rogers movie, "The Story of Vernon & Irene Castle." It is notable, she notes, because maps were used in this 1939 film as backdrops to show them dancing across America. Another point of interest is Vernon Castle was killed in WW I; he was an aerial photographer.

Do we consider the entire film a cartifact?

And what about the map burned up at the beginning of each "Bonanza" episode?



# Western Association of Map Libraries

## Occasional Papers

ISBN 0-939112-

- 1973 *Catalogue of Sanborn atlases at California State University, Northridge* / by Gary W. Rees and Mary Hoerber. O P No. 1. LC # 73-5773 ISBN -01-9 \$4.00
- 1976 *Union list of Sanborn fire insurance maps held by institutions in the United States and Canada, vol. 1, Alabama to Missouri* / by R. Philip Hoehn. O P No. 2 LC # 76-6129 ISBN -02-7 \$5.00
- 1977 *Union list of Sanborn fire insurance maps held by institutions in the United States and Canada, vol. 2, Montana to Wyoming; Canada and Mexico* / by William S. Peterson-Hunt and Evelyn L. Woodruff; with a supplement and corrigenda to volume 1, by R. Philip Hoehn. O P # 3 LC # 76-2129 Rev.; ISBN 03-5 \$6.00
- Occasional Papers 2 and 3 when ordered together: ISBN 04-3 \$10.00
- 1978 *Index to early twentieth-century city plans appearing in guidebooks: Baedeker, Muirhead-Blue Guides, Murray, I.J.G.R., etc., plus selected other works to provide worldwide coverage of over 2,000 plans to over 1,200 communities, found in 74 guidebooks* / by Harold M. Otness. OP # 4 LC # 78-15094 ISBN 05-1 \$6.00
- 1978 *The maps of Fiji: a selective and annotated cartobibliography* / by Mason S. Green. OP # 5 LC # 78-24066 ISBN 06-X \$4.00
- 1980 *Index to nineteenth-century city plans appearing in guidebooks: Baedeker, Murray, Joanne, Black, Appleton, Meyer, plus selected other works to provide coverage of over 1,800 plans to nearly 600 communities, found in 164 guidebooks* / by Harold M. Otness. OP # 7 LC # 80-24483 ISBN 08-6 \$6.00
- 1981 *Microcartography: applications for archives and libraries* / edited by Larry Cruse, with the assistance of Sylvia B. Warren. O P # 6 LC # 81-19718 ISBN 07-8 \$20.00
- 1981 *Printed maps of Utah to 1900; an annotated cartobibliography* / by Riley Moore Moffat. O P # 8 LC # 81-659 ISBN 09-4 \$10.00
- 1983 *Index to the Information Bulletin (Volumes 1-10, 1969-1979) of the Western Association of Map Libraries* / by Frances M. Woodward. O P # 9 LC # 83-6880 ISBN 10-8 [microfiche] \$5.00
- 1984 *Nevada Directory of Maps and Aerial Photo Resources* / by Mary B. Ansari and Linda P. Newman. O P # 11 ISBN 13-2 \$15.00
- 1986 *Map index to topographic quadrangles of the United States, 1882-1940* / by Riley Moore Moffat. O P # 10 LC # 84-21984 ISBN 12-4 \$32.50

## Microform Sets

### Permanent Stock File:

Cassini & Carte de France, French Revolutionary Era surveys.	214 fiche	\$65.
U.S. Navy nautical charts of Melanesia, 1917-1975.	251 fiche	\$75.
Pacific Basin Map Exhibit of the Library of Congress.	83 fiche	\$25.
Bernice Bishop Museum air photos of Melanesia. ca. 64,000 photos on 70 reels of 35mm film.		\$25/roll
Maps and charts of North America and the Caribbean 1750-1789 [phase 1, titles # 3- thru - #155]	335 fiche	\$100.

Orders may be placed with the WAML Treasurer  
Stanley D. Stevens, Map Librarian  
University of California at Santa Cruz, Santa Cruz, CA 95064